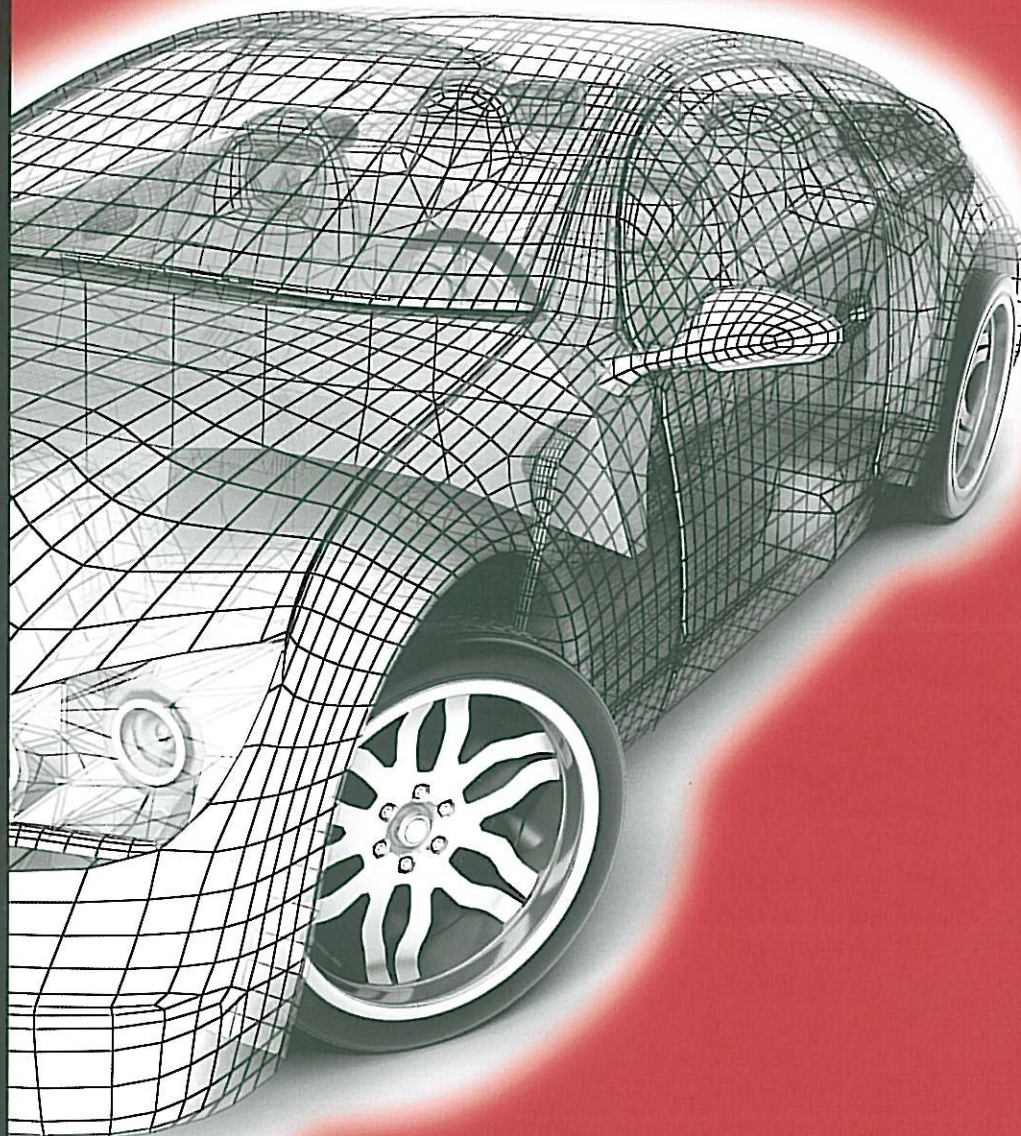


Tianjin Century Rubber Co., Ltd

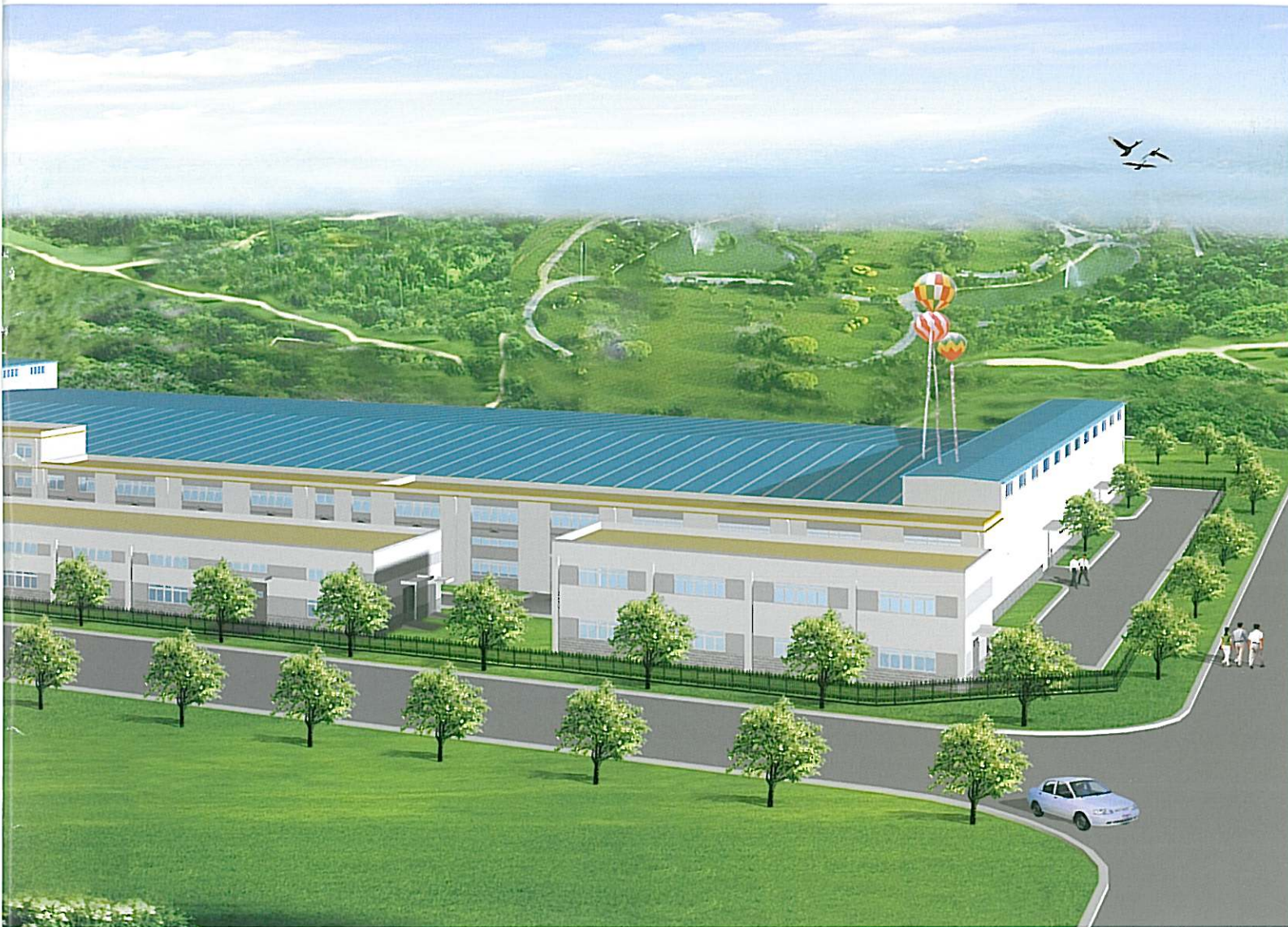


TOP TYRE



Tianjin Century Rubber Co., Ltd Introduction

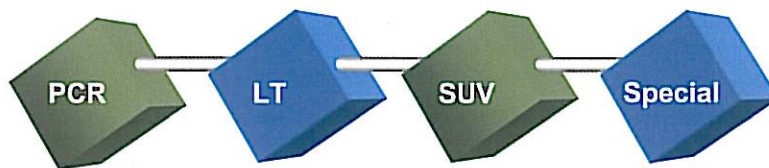
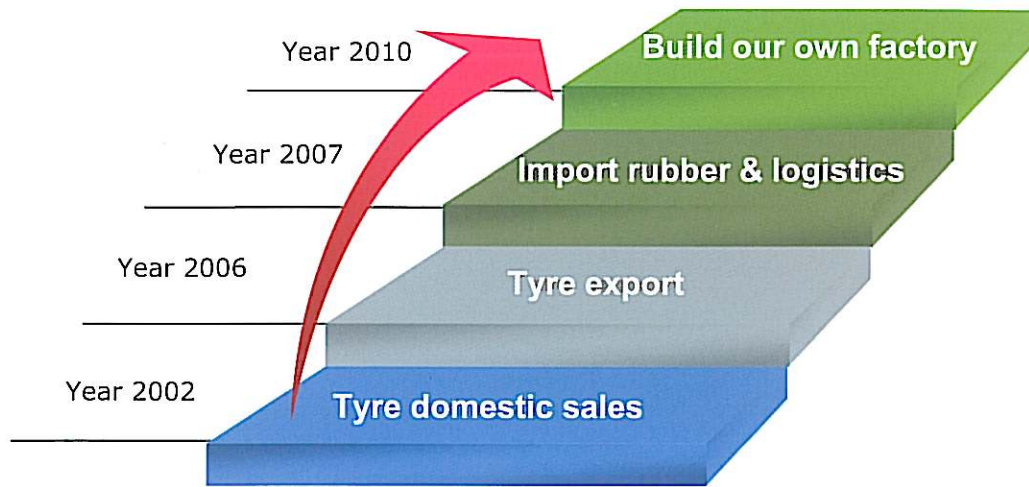
Tianjin Century Rubber Co.,Ltd, located in Tianjin Jinghai Economic Development Zone, is established in 2009 and covers an area of 50,000 m² with total assets 500 million RMB and more than 700 staff. The factory has the capacity to supply 3 million semi-steel radial tyres mostly ranging from Passenger Car Radial Tyre, Commercial Tyre to Light Truck Tyre , SUV and UHP Tyre per year, who has become a comprehensive corporation gained strong foot in the fields of manufacturing, research and sales, based on advanced equipments, leading technology and full sets of inspection facilities. Tianjin Century Rubber Co. Ltd has built up well-established quality control system accredited with C.C.C, ISO9001, DOT, ECE, INMETRO, SONCAP and GCC. Tianjinshi TopTyre Co.,Ltd is the former company of Tianjin Century Rubber Co.,Ltd, who established TOP brand in 2002 and consistently holds the value of combination of introducing new technology and independent innovation, through which she has been developing many kinds of tread patterns suitable for various car styles and different seasons.



TOP brand has been exporting to more than 30 countries and regions from Middle East, Africa and Central and South America receiving good market response and clients' high praise. Upholding the primary principle of focus on quality improvement, new patterns and tyre size development and research and setting up efficient logistics system, Tianjin Century Rubber Co.,Ltd is well positioned to provide the best service to meet every partner's need. We sincerely welcome visit and inquiries from both new and old customers all over the world.



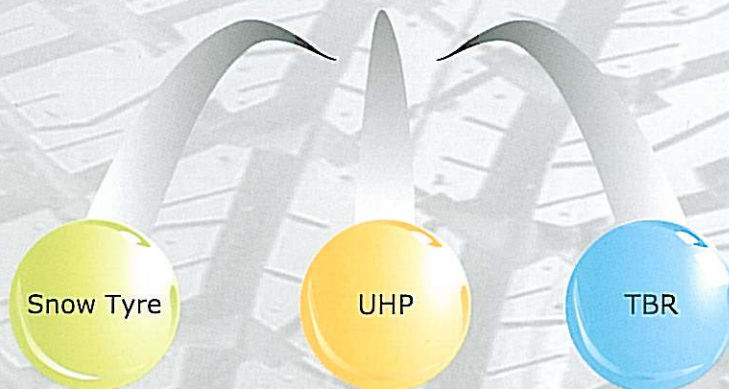
Developing History



12 inch 13 inch 14 inch 15 inch 16 inch 17 inch 18 inch	650R15C 700R15C 650R16C 700R16C 750R16C	P215/75R15 P225/75R15 P235/75R15 235/70R16 235/60R16 265/70R16 275/70R16 31*10.5R15LT	WSW WLW Mud+Snow Winter
---	---	--	----------------------------------

Types and sizes under developing

Top Brand





extruding machine



calendar



cooling



building machine



cutting machine



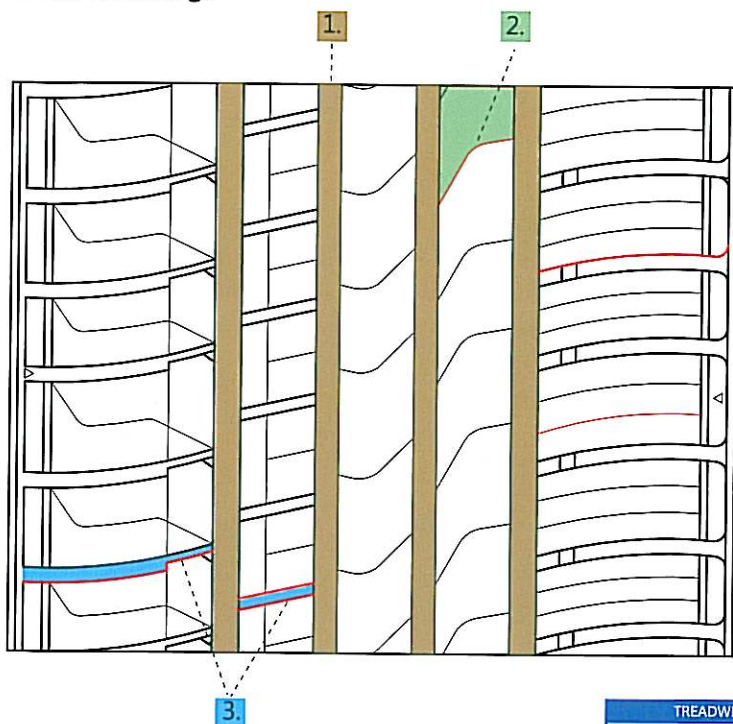
curing machine

CRA266



Four main grooves are advantageous to tyre's high speed and heat dissipation. Meanwhile it has excellent anti-wet and anti-slippery ability.

1. Good drainage, suit for high speed.
2. Lateral tread grooves are conducive to high-speed drainage and heat dissipation. Increase tire adhesion on the ground. Pattern is non-symmetry, Improve performance.
3. Lateral tread groove can avoid excessive noise. More conducive to drainage and the tire self-cleaning.



TREADWEAR	TRACTION	TEMPERATURE
300	A	A

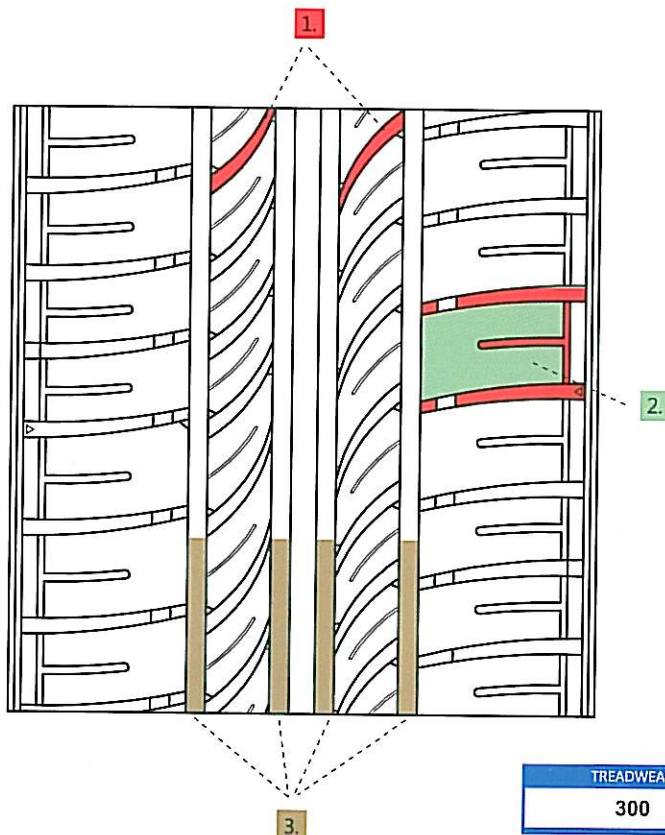
Size	Pattern	Load Index	Speed Index	P.R.	O.D (mm/inches)	S.W (mm/inches)	Inflation (PSI/BAR)	Max Load (Kgs/LBS)	Standard Rim (Inches)	Remark
195/50R15	CRA266	82	V		577/22.72	201/7.91	36/2.5	475/1047	5.0J	
185/55R15	CRA266	82	V		585/23.03	194/7.64	36/2.5	500/1102	6.0J	
195/55R15	CRA266	85	V		595/23.43	201/7.91	36/2.5	515/1136	6.0J	
185/60R15	CRA266	84	H		603/23.74	189/7.44	36/2.5	500/1102	5.5	
185/60R15	CRA266	84	T		603/23.74	189/7.44	36/2.5	500/1102	5.5	
185/60R15	CRA266	88	H XL		603/23.74	189/7.44	42/2.9	560/1234	5.5	
195/60R15	CRA266	88	H		615/24.21	201/7.91	36/2.5	560/1234	6.0J	
195/60R15	CRA266	88	V		615/24.21	201/7.91	36/2.5	560/1234	6.0J	
205/60R15	CRA266	91	H		627/24.69	209/8.23	36/2.5	615/1356	6.0J	
205/60R15	CRA266	91	V		627/24.69	209/8.23	36/2.5	615/1356	6.0J	
215/60R15	CRA266	94	H		639/25.16	221/8.70	36/2.5	670/1477	6.5J	
215/60R15	CRA266	94	V		639/25.16	221/8.70	36/2.5	670/1477	6.5J	
215/60R15	CRA266	98	V XL		639/25.16	221/8.70	42/2.9	750/1653	6.5J	
225/60R15	CRA266	96	V		651/25.63	228/8.98	36/2.5	710/1565	6.5J	
185/65R15	CRA266	88	H		621/24.45	185/7.28	36/2.5	560/1235	6.0J	
195/65R15	CRA266	91	H		635/25.00	201/7.91	36/2.5	615/1356	6.0J	
205/65R15	CRA266	94	H		647/25.47	209/8.23	36/2.5	670/1477	6.0J	
205/65R15	CRA266	94	V		647/25.47	209/8.23	36/2.5	670/1477	6.0J	
215/65R15	CRA266	96	H		661/26.02	221/8.70	36/2.5	710/1565	6.5J	
215/65R15	CRA266	96	V		661/26.02	221/8.70	36/2.5	710/1565	6.5J	
205/50R16	CRA266	87	W		612/24.09	214/8.43	36/2.5	545/1201	6.5J	
205/55R16	CRA266	91	H		632/24.88	214/8.43	36/2.5	615/1356	6.5J	
205/55R16	CRA266	91	V		632/24.88	214/8.43	36/2.5	615/1356	6.5J	
225/55R16	CRA266	91	W		632/24.88	214/8.43	36/2.5	615/1356	6.5J	
205/55R16	CRA266	94	V XL		632/24.88	214/8.43	42/2.9	670/1477	6.5	
215/55R16	CRA266	93	W		642/25.28	226/8.90	36/2.5	650/1433	7.0J	
215/55R16	CRA266	97	V XL		642/25.28	226/8.90	42/2.9	730/1609	7.0J	
215/55R16	CRA266	97	W XL		642/25.28	226/8.90	42/2.9	730/1609	7.0J	
225/55R16	CRA266	95	W		654/25.75	233/9.17	36/2.5	690/1521	7.0J	
225/55R16	CRA266	99	V XL		654/25.75	233/9.17	42/2.9	775/1708	7.0J	
225/55R16	CRA266	99	W XL		654/25.75	233/9.17	42/2.9	775/1708	7.0J	
205/60R16	CRA266	92	H		652/25.67	209/8.23	36/2.5	630/1389	6.0J	
205/60R16	CRA266	92	V		652/25.67	209/8.23	36/2.5	630/1389	6.0J	
215/60R16	CRA266	95	H		664/26.14	221/8.70	36/2.5	690/1521	6.5J	
215/60R16	CRA266	95	V		664/26.14	221/8.70	36/2.5	690/1521	6.5J	
225/60R16	CRA266	98	H/V		676/26.61	228/9.00	36/2.5	750/1653	6.5J	
205/65R16	CRA266	95	V		672/26.46	209/8.23	44/3.0	690/1521	6.0J	
215/65R16	CRA266	98	H/V		686/27.00	221/8.70	36/2.5	750/1653	6.5J	

CRA260



Four main grooves are advantageous to tyre's high speed and heat dissipation. Meanwhile it has excellent anti-wet and anti-slippery ability.

- 1.** Lateral tread grooves are conducive to a better drain and heat dissipation. Reduce the noise.
- 2.** The pattern is designed for good grip. The torque is good. Excellent drainage
- 3.** Good drainage, suit for high speed.



TREADWEAR	TRACTION	TEMPERATURE
300	A	A

CENTURY RUBBER



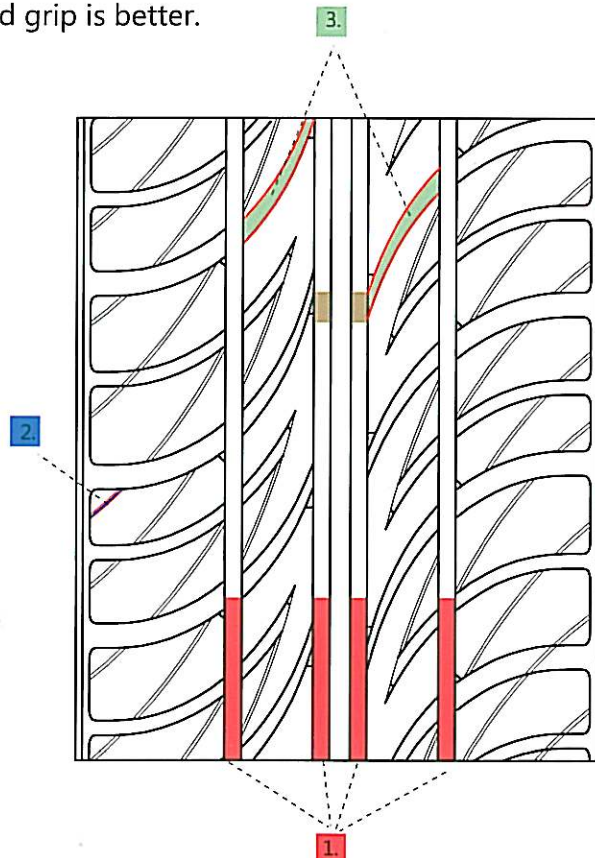
Size	Pattern	Load Index	Speed Index	P.R.	O.D (mm/inches)	S.W (mm/inches)	Inflation (PSI/BAR)	Max Load (Kgs/LBS)	Standard Rim (Inches)	Remark
175/60R13	CRA260	77	H		540/21.30	177/7.00	36/2.5	412/908	5.0B	
185/60R14	CRA260	82	H		578/22.76	189/7.44	36/2.5	475/1047	5.5J	
195/60R14	CRA260	86	H		590/23.23	201/7.91	36/2.5	530/1166	6.0J	
175/70R14	CRA260	84	T		602/23.70	177/6.97	36/2.5	500/1102	5.0B	
175/70R14	CRA260	82	H		602/23.70	177/6.97	36/2.5	475/1047	5.0B	
175/70R14	CRA260	82	T		602/23.70	177/6.97	36/2.5	475/1047	5.0B	
185/70R14	CRA260	88	H		616/24.25	189/7.44	36/2.5	560/1235	5.0B	
185/70R14	CRA260	88	T		616/24.25	189/7.44	36/2.5	560/1235	5.0B	

CRA200



Four main grooves are advantageous to tyre's high speed and heat dissipation. Meanwhile it has excellent anti-wet and anti-slippery ability.

1. Lateral tread grooves are conducive to high-speed drainage and Heat dissipation. Increase the adhesion of the tires on the ground
2. Torque force is very powerful. Better cornering.
3. Overall symmetry, greatly enhance the self-cleaning and drainage, Torque force and grip is better.



TREADWEAR	TRACTION	TEMPERATURE
300	A	A

CENTURY RUBBER



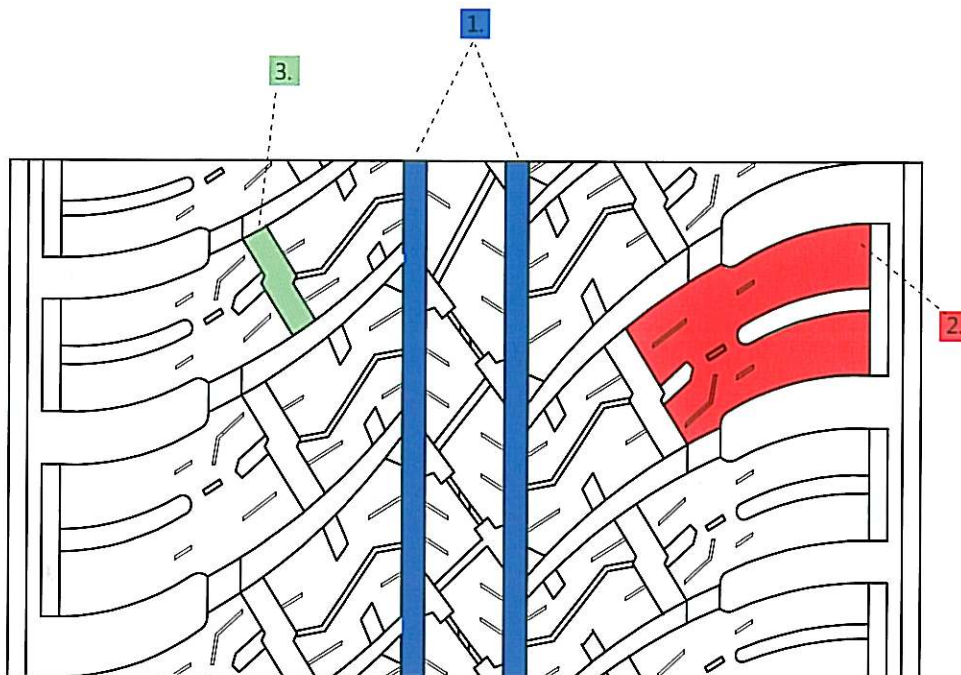
Size	Pattern	Load Index	Speed Index	P.R.	O.D (mm/inches)	S.W (mm/inches)	Inflation (PSI/BAR)	Max Load (Kgs/LBS)	Standard Rim (Inches)	Remark
155/70R12	CRA200	73	S		523/20.59	157/6.18	36/2.5	365/805	4.5B	
155/65R13	CRA200	73	T		532/20.94	157/6.18	36/2.5	365/805	4.5B	
165/65R13	CRA200	77	H		544/21.42	170/6.69	36/2.5	412/908	5.0B	
165/70R13	CRA200	79	T		562/22.13	170/6.69	36/2.5	437/964	5.0B	
175/70R13	CRA200	82	H		576/22.68	177/6.97	36/2.5	475/1047	5.0B	
185/70R13	CRA200	86	H		590/23.23	189/7.44	36/2.5	530/1169	5.5B	

CRA280



Deeper groove design coupled with new improved long lasting tread-wear compound formula and excellent sideslip protection will greatly enhancing the traction and heat-releasing ability.

1. linear groove design provide excellent water dispersion and skid resistance.
2. excellent sideslip protection will greatly enhancing the traction and heat-releasing ability.
3. Deeper groove design coupled with new improved long lasting tread-wear compound formula



TREADWEAR	TRACTION	TEMPERATURE
300	A	A

CENTURY RUBBER



Size	Pattern	Load Index	Speed Index	P.R.	O.D (mm/inches)	S.W (mm/inches)	Inflation (PSI/BAR)	Max Load (Kgs/LBS)	Standard Rim (Inches)	Remark
215/75R15	CRA280	100	H		703/27.68	216/8.50	36/2.5	800/1764	6.0J	M+S WLW
215/75R15	CRA280	100	S		703/27.68	216/8.50	36/2.5	800/1764	6.0J	M+S WLW
225/75R15	CRA280	102	S		719/28.31	223/8.78	36/2.5	850/1875	6.0J	M+S WLW
235/75R15	CRA280	105	S		733/28.86	235/9.25	36/2.5	925/2040	6.5J	M+S WLW

CRA300

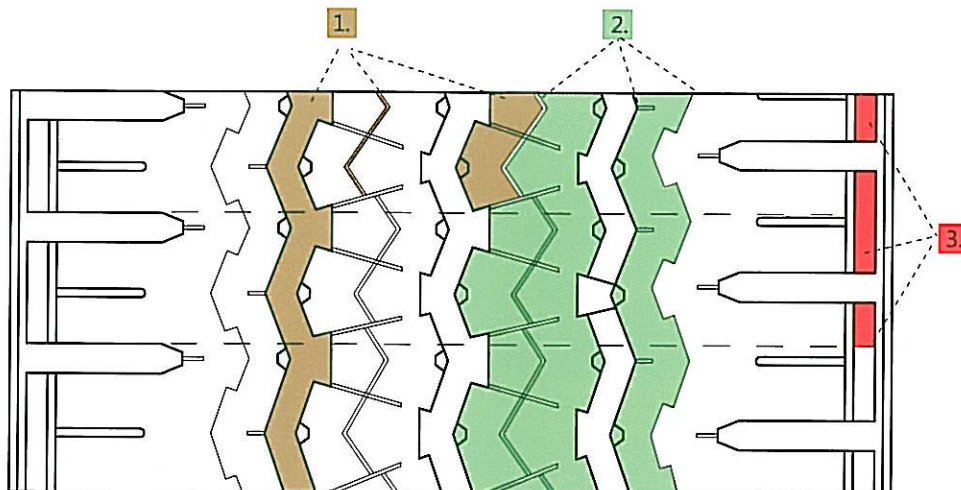


Combines the features of vertical pattern and block pattern, a good grip, excellent performance of anti-wet and anti-slippery, apply to poor road surface.

Heat dissemination is good ,grip performance is improved.

Variable pitch and irregular array, avoid resonance, minimizes the noise generated at high speeds.

1. Combines the characteristics of longitudinal patterns and block patterns, have a good grip and wet skid resistance, applies to the poor road surface.
2. The tread pattern of the steel in the middle of help soften the tread distribution of calories, and improve the folding grip.
3. Whole week pattern variable pitch no regular arrangement, to avoid resonance. Minimize the noise generated at high speed.



TREADWEAR	TRACTION	TEMPERATURE
300	A	A



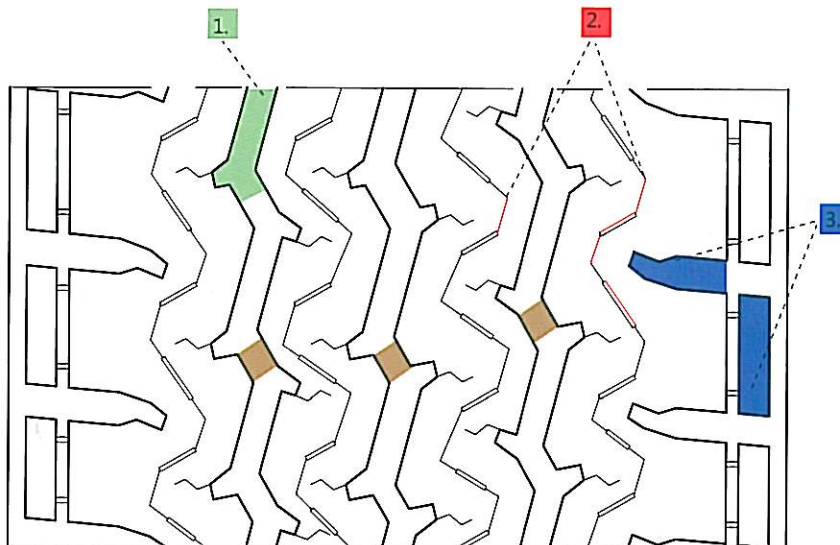
Size	Pattern	Load Index	Speed Index	P.R.	O.D (mm/inches)	S.W (mm/inches)	Inflation (PSI/BAR)	Max Load (Kgs/LBS)	Standard Rim (Inches)	Remark
185R14C	CRA300	102/100	T	8PR	655/25.79	188/7.40	64/4.5	850/1874	5.5J	
195R14C	CRA300	106/104	S	8PR	666/26.22	198/7.80	60/4.5	950/2090	5.5J	
205R14C	CRA300	109/107	S	8PR	686/27.00	208/8.19	65/4.5	1030/2271 975/2149	6.0J	
185R15C	CRA300	103/102	S	8PR	674/26.54	188/7.40	64/4.5	875/1930	5.5J	
195R15C	CRA300	106/104	S	8PR	692/27.24	198/7.80	65/4.5	950/2094 900/1984	5.5J	
195/70R15C	CRA300	104/102	S	8PR	655/25.79	201/7.91	64/4.5	900/1985	6.0J	
205/70R15C	CRA300	106/104	S	8PR	669/26.34	209/8.23	64/4.5	950/2095	6.0J	
215/70R15C	CRA300	109/107	S	8PR	683/26.89	221/8.70	64/4.5	1030/2270	6.5J	
225/70R15C	CRA300	112/110	S	8PR	697/27.44	228/8.98	64/4.5	1120/2469	6.5J	

CRA100



Three main grooves improve rejection the stone; improve the grasp and rejection of heat so quickly. The strong tread improves the adhesion and rejection of heat performance. Reduce groove cracks to a minimum. Uneven abrasion is diminished by the insertion of kerfs on the shoulder area.

1. Three main ditch row of stone, to improve grip, and the use of rapid cooling.
2. Increase the steel to make it to adjust the rigidity of the tread to improve tire adhesion and thermal performance.
3. Tortuous pattern is conducive to heat dissipation to increase strength. Avoid the phenomenon of the shoulder separation.



TREADWEAR	TRACTION	TEMPERATURE
300	A	A

TW-6



Four main grooves are advantageous to tyre's high speed and heat dissipation. Meanwhile it has excellent anti-wet and anti-slippery ability.

crosswise grooves are advantageous to water and dirt drainage, meanwhile improving appearance.

The irregular array of the variable pitched pattern, effectively draining off dirt and water.

Size	Load Index	Speed Index	P. R.	O.D (mm/inches)	S.W (mm/inches)	Inflation (PSI/BAR)	Max Load (Kgs/LBS)	Standard Rim (Inches)	Remark
6.50R15C	107/105	M	10	730/28.74	180/7.09	78/5.5	975/2150	5.5F	
7.00R15C	116/108	M	12	750/29.53	200/7.87	95/6.7	1250/2756	5.5F	
6.50R16C	108/107	N	10	750/29.53	185/7.28	73/5.0	1000/2205	5.5F	
7.00R16C	117/116	N	12	775/30.51	200/7.87	95/6.7	1285/2833	5.5F	
7.50R16C	121/117	M	14	805/31.69	215/8.46	107/7.4	1450/3200	5.5F	



CENTURY RUBBER



Size	Pattern	Load Index	Speed Index	P.R.	O.D (mm/inches)	S.W (mm/inches)	Inflation (PSI/BAR)	Max Load (Kgs/LBS)	Standard Rim (Inches)	Remark
155R12C	CRA100	88/86	N	8PR	550/21.65	163/6.42	64/4.5	560/1235	4.5B	
155R13C	CRA100	85/83	N	8PR	578/22.76	157/6.18	50/3.5	515/1135	4.5B	
165R13C	CRA100	94/92	Q	8PR	596/23.46	167/6.57	64/4.5	670/1478	4.5J	
175R13C	CRA100	97/96	T	8PR	608/23.94	178/7.01	64/4.5	730/1069	5.0J	
165/70R13C	CRA100	88/86	T	8PR	562/22.13	170/6.69	54/3.75	560/1235	5.0J	

TW-2



Completely new composite materials with the latest computer design
 Quiet running, comfortable riding and stable driving function.
 Excellent handling and sensitive cornering response.
 Super deep grooves and outstanding tyre's tread compound formula
 for endurance and long mileage life.

Size	Load Index	Speed Index	P. R.	O.D (mm/inches)	S.W (mm/inches)	Inflation (PSI/BAR)	Max Load (Kgs/LBS)	Standard Rim (Inches)	Remark
145/70R12	69	T		509/20.04	150/5.91	36/2.5	325/717	4.5B	

TW-5



Four circumferential and lug grooves improve the self-cleaning and excellent wet skid resistance .Whilst the directional, arrow-head tread pattern ensures handling precision,
 Even on damp greasy surfaces, assistant pattern improves the adhesion and rejection of heat performance and soft sidewall of tyre ensure stable and comfortable riding at high speed.

Size	Load Index	Speed Index	P. R.	O.D (mm/inches)	S.W (mm/inches)	Inflation (PSI/BAR)	Max Load (Kgs/LBS)	Standard Rim (Inches)	Remark
195/70R14	91	H		630/24.80	201/7.91	36/2.5	615/1356	6.0J	

TW-26



Optimal design of block pattern endows tyres with superior wearing resistance.

Three main continuous groove profiles incorporated with the lateral sipes endows tyre with excellent water dispersal property.

Special sliding resistance and low noise design gives you a comfort riding, safe and reliable.

Size	Load Index	Speed Index	P. R.	O.D (mm/inches)	S.W (mm/inches)	Inflation (PSI/BAR)	Max Load (Kgs/LBS)	Standard Rim (Inches)	Remark
155/70R13	79	T		548/21.57	157/6.18	41/2.9	437/965	4.5B	

TW-11



Three longitudinal wide grooves provide excellent water dispersion and skid resistance.

Lateral streamline grooves with sipes improve heat-releasing and braking ability.

Size	Load Index	Speed Index	P. R.	O.D (mm/inches)	S.W (mm/inches)	Inflation (PSI/BAR)	Max Load (Kgs/LBS)	Standard Rim (Inches)	Remark
175/65R14	82	H		584/22.99	177/6.97	36/2.5	475/1047	5.0B	

TW-17



Wider linear groove design provide excellent water dispersion and skid resistance.

Two longitudinal center ribs provide excellent linear driving performance and tire wear resistance.

Lateral zigzag grooves combine with sipes provide powerful traction and grip ability.

Size	Load Index	Speed Index	P. R.	O.D (mm/inches)	S.W (mm/inches)	Inflation (PSI/BAR)	Max Load (Kgs/LBS)	Standard Rim (Inches)	Remark
185/65R14	86	H		596/23.46	189/7.44	36/2.5	530/1169	5.5J	

TW-19



Four longitudinal straight grooves provides drainage of water which provide great traction on wet surface.

The wide shoulder with the sipes improve the heat-releasing ability and hydroplaning resistance.

Size	Load Index	Speed Index	P. R.	O.D (mm/inches)	S.W (mm/inches)	Inflation (PSI/BAR)	Max Load (Kgs/LBS)	Standard Rim (Inches)	Remark
215/70R15	98	H		683/26.89	221/8.70	36/2.5	750/1654	6.5J	

TW-21



Lateral zigzag grooves combine with sipes provide powerful traction and grip ability.
Three wide longitudinal straight grooves improve high speed performance and water evacuation.

Size	Load Index	Speed Index	P. R.	O.D (mm/inches)	S.W (mm/inches)	Inflation (PSI/BAR)	Max Load (Kgs/LBS)	Standard Rim (Inches)	Remark
165/80R13	83	H		594/23.39	165/6.50	36/2.4	487/1074	4.5B	

TW-8



Four main grooves match up with small grooves better improves grip ability, and the comfort performance, prevents stones clamping. And adapt to all terrain.

It is advantageous to soften tread and improve comfort, and reinforce adhesion, making it has good performance control.

Crosswise collocation reasonably avoids shoulder hovering. is advantageous to drain contamination.

Size	Load Index	Speed Index	P. R.	O.D (mm/inches)	S.W (mm/inches)	Inflation (PSI/BAR)	Max Load (Kgs/LBS)	Standard Rim (Inches)	Remark
265/70R16	112	S		778/30.63	272/10.71	50/3.5	1120/2470	8.0J	
275/70R16	114	T		792/31.18	279/10.98	50/3.5	1180/2602	8.0J	

TW-16



Four main grooves are advantageous to tyre's high speed and heat dissipation. Meanwhile it has excellent anti-wet and anti-slippery ability, as well as drainage performance.

crosswise collocation is advantageous tyre's high speed adhesion, making the driving more stable and safer. Meanwhile it's good to heat dissipation and drainage performance.

it can better soften the tread, and adjust the pattern's rigidity, facilitating heat dissipation, representing good wear-resisting performance.

Size	Load Index	Speed Index	P. R.	O.D (mm/inches)	S.W (mm/inches)	Inflation (PSI/BAR)	Max Load (Kgs/LBS)	Standard Rim (Inches)	Remark
245/70R16	107	S		750/29.53	248/9.76	43/3.0	975/2150	7.0J	

TW-32



Abnormity block pattern design adopt abnormity configuration, highly improve the sport utility.

Main straight grooves design maintain high speed performance and water evacuation.

Size	Load Index	Speed Index	P. R.	O.D (mm/inches)	S.W (mm/inches)	Inflation (PSI/BAR)	Max Load (Kgs/LBS)	Standard Rim (Inches)	Remark
31*10.5R15LT	109	S	6	775/30.51	268/10.55	50/3.5	487/1074	1030/2275	8.5J

CRC988



Innovative pattern design, improve the brake performance, comfort and driving.
 New design for grooves, optimize the drainage and excrete stone ability.
 Excellent grip enhance the grade of security.
 Exquisite appearance, new feeling.
 Excellent wear-resistant and heat-resisting performance

Size	Pattern	Load Index	Speed Index	P. R.	O.D (mm/inches)	S.W (mm/inches)	Inflation (PSI/BAR)	Max Load (Kgs/LBS)	Standard Rim (Inches)	Remark
235/70R16	CRC988	106	T		736/29.00	240/9.40	36/2.5	950/2094	7.0J	

CRC618



The design of four main grooves and traed pattern ensure the tires with a driving comfort and stability.
 The shoulder' s pattern can avoid excessive noise, improve drainage and driving comfort.
 New desine for side wall, beautiful appearance.
 Excellent wear resistance and heat-resisting.

Size	Pattern	Load Index	Speed Index	P. R.	O.D (mm/inches)	S.W (mm/inches)	Inflation (PSI/BAR)	Max Load (Kgs/LBS)	Standard Rim (Inches)	Remark
235/60R16	CRC618	100	H		688/27.10	240/9.40	36/2.5	800/1764	7.0J	

TW-16



Four main grooves are advantageous to tyre's high speed and heat dissipation. Meanwhile it has excellent anti-wet and anti-slippery ability, as well as drainage performance.

crosswise collocation is advantageous tyre's high speed adhesion, making the driving more stable and safer. Meanwhile it's good to heat dissipation and drainage performance.

it can better soften the tread, and adjust the pattern's rigidity, facilitating heat dissipation, representing good wear-resisting performance.

Size	Load Index	Speed Index	P. R.	O.D (mm/inches)	S.W (mm/inches)	Inflation (PSI/BAR)	Max Load (Kgs/LBS)	Standard Rim (Inches)	Remark
245/70R16	107	S		750/29.53	248/9.76	43/3.0	975/2150	7.0J	

TW-32



Abnormity block pattern design adopt abnormity configuration, highly improve the sport utility.

Main straight grooves design maintain high speed performance and water evacuation.

Size	Load Index	Speed Index	P. R.	O.D (mm/inches)	S.W (mm/inches)	Inflation (PSI/BAR)	Max Load (Kgs/LBS)	Standard Rim (Inches)	Remark
31*10.5R15LT	109	S	6	775/30.51	268/10.55	50/3.5	487/1074	1030/2275	8.5J

TW-39



It is an ideal tyre used for light truck and commercial vehicle, not only with excellent heat-releasing and soft tread, but also increased self-cleaning ability on mud, grit, and other kind of soft road surface. Effectively improved heat-releasing performance, reduced the wear of shoulder. Optimized pitch alignment and offset between 2-side pitch lines avoid resonance and provide silent driving conditions.

Size	Load Index	Speed Index	P. R.	O.D (mm/inches)	S.W (mm/inches)	Inflation (PSI/BAR)	Max Load (Kgs/LBS)	Standard Rim (Inches)	Remark
195/75R16C	110/108	Q	10	698/27.48	196/7.72	80/5.5	1060/2338	5.5J	

TW-22



Combines the features of vertical pattern and block pattern, a good grip, excellent performance of anti-wet and anti-slippery, apply to poor road surface. Heat dissemination is good ,grip performance is improved. Variable pitch and irregular array, avoid resonance, minimizes the noise generated at high speeds.

Size	Load Index	Speed Index	P. R.	O.D (mm/inches)	S.W (mm/inches)	Inflation (PSI/BAR)	Max Load (Kgs/LBS)	Standard Rim (Inches)	Remark
215R14C	112/110	Q	8	700/27.60	218/8.58	64/4.5	1120/2470	6.0J	
175R14C	99/98	T	8	634/24.96	178/7.01	64/4.5	775/1708	5.0J	
175/70R14C	99/98	T	8	627/24.70	201/8.00	65/4.5	775/1708 750/1655	5.0J	

TW-1



Three main grooves improve rejection the stone; improve the grasp and rejection of heat so quickly. The strong tread improves the adhesion and rejection of heat performance. Reduce groove cracks to a minimum. Uneven abrasion is diminished by the insertion of kerfs on the shoulder area.

Size	Load Index	Speed Index	P. R.	O.D (mm/inches)	S.W (mm/inches)	Inflation (PSI/BAR)	Max Load (Kgs/LBS)	Standard Rim (Inches)	Remark
155/80R13	79	S		578/22.76	157/6.18	35/2.4	437/965	4.5B	
215/75R14C	112/110	Q	8	678/26.69	216/8.50	67/4.75	1120/2470	6.0J	



TW-39



It is an ideal tyre used for light truck and commercial vehicle, not only with excellent heat-releasing and soft tread, but also increased self-cleaning ability on mud, grit, and other kind of soft road surface.

Effectively improved heat-releasing performance, reduced the wear of shoulder.

Optimized pitch alignment and offset between 2-side pitch lines avoid resonance and provide silent driving conditions.

Size	Load Index	Speed Index	P. R.	O.D (mm/inches)	S.W (mm/inches)	Inflation (PSI/BAR)	Max Load (Kgs/LBS)	Standard Rim (Inches)	Remark
195/75R16C	110/108	Q	10	698/27.48	196/7.72	80/5.5	1060/2338	5.5J	

TW-22



Combines the features of vertical pattern and block pattern, a good grip, excellent performance of anti-wet and anti-slippery, apply to poor road surface.

Heat dissemination is good ,grip performance is improved.

Variable pitch and irregular array, avoid resonance, minimizes the noise generated at high speeds.

Size	Load Index	Speed Index	P. R.	O.D (mm/inches)	S.W (mm/inches)	Inflation (PSI/BAR)	Max Load (Kgs/LBS)	Standard Rim (Inches)	Remark
215R14C	112/110	Q	8	700/27.60	218/8.58	64/4.5	1120/2470	6.0J	
175R14C	99/98	T	8	634/24.96	178/7.01	64/4.5	775/1708	5.0J	
175/70R14C	99/98	T	8	627/24.70	201/8.00	65/4.5	775/1708 750/1655	5.0J	

Size	Pattern	Load Index	Speed Index	P. R.	O.D (mm/inches)	S.W (mm/inches)	Inflation (PSI/BAR)	Max Load (Kgs/LBS)	Standard Rim (Inches)	Remark
155/70R12	CRA200	73	S		523/20.59	157/6.18	36/2.5	365/805	4.5B	
155/65R13	CRA200	73	T		532/20.94	157/6.18	36/2.5	365/805	4.5B	
165/65R13	CRA200	77	H		544/21.42	170/6.69	36/2.5	412/908	5.0B	
165/70R13	CRA200	79	T		562/22.13	170/6.69	36/2.5	437/964	5.0B	
175/70R13	CRA200	82	H		576/22.68	177/6.97	36/2.5	475/1047	5.0B	
185/70R13	CRA200	86	H		590/23.23	189/7.44	36/2.5	530/1169	5.5B	
175/60R13	CRA260	77	H		540/21.30	177/7.00	36/2.5	412/908	5.0B	
185/60R14	CRA260	82	H		578/22.76	189/7.44	36/2.5	475/1047	5.5J	
195/60R14	CRA260	86	H		590/23.23	201/7.91	36/2.5	530/1166	6.0J	
175/70R14	CRA260	84	T		602/23.70	177/6.97	36/2.5	500/1102	5.0B	
175/70R14	CRA260	82	H		602/23.70	177/6.97	36/2.5	475/1047	5.0B	
175/70R14	CRA260	82	T		602/23.70	177/6.97	36/2.5	475/1047	5.0B	
185/70R14	CRA260	88	H		616/24.45	189/7.44	36/2.5	560/1235	5.0B	
185/70R14	CRA260	88	T		616/24.45	189/7.44	36/2.5	560/1235	5.0B	
195/50R15	CRA266	82	V		577/22.72	201/7.91	36/2.5	475/1047	5.0J	
185/55R15	CRA266	82	V		585/23.03	194/7.64	36/2.5	500/1102	6.0J	
195/55R15	CRA266	85	V		595/23.43	201/7.91	36/2.5	515/1136	6.0J	
185/60R15	CRA266	84	H		603/23.74	189/7.44	36/2.5	500/1102	5.5	
185/60R15	CRA266	84	T		603/23.74	189/7.44	36/2.5	500/1102	5.5	
185/60R15	CRA266	88	H XL		603/23.74	189/7.44	42/2.9	506/1234	5.5	
195/60R15	CRA266	88	H		615/24.21	201/7.91	36/2.5	506/1234	6.0J	
195/60R15	CRA266	88	V		615/24.21	201/7.91	36/2.5	560/1234	6.0J	
205/60R15	CRA266	91	H		627/24.69	209/8.23	36/2.5	615/1356	6.0J	
205/60R15	CRA266	91	V		627/24.69	209/8.23	36/2.5	615/1356	6.0J	
215/60R15	CRA266	94	H		639/25.16	221/8.70	36/2.5	670/1477	6.5J	
215/60R15	CRA266	94	V		639/25.16	221/8.70	36/2.5	670/1477	6.5J	
215/60R15	CRA266	98	V XL		639/25.16	221/8.70	42/2.9	705/1653	6.5J	
225/60R15	CRA266	96	V		651/25.63	228/8.98	36/2.5	710/1565	6.5J	
185/65R15	CRA266	88	H		521/24.45	185/7.28	36/2.5	560/1235	6.0J	
195/65R15	CRA266	91	H		635/25.00	201/7.91	36/2.5	615/1356	6.0J	
205/65R15	CRA266	94	H		647/25.47	209/8.23	36/2.5	670/1477	6.0J	
205/65R15	CRA266	94	V		647/25.47	209/8.23	36/2.5	670/1477	6.0J	
215/65R15	CRA266	96	H		661/26.02	221/8.70	36/2.5	710/1565	6.5J	
215/65R15	CRA266	96	V		661/26.02	221/8.70	36/2.5	710/1565	6.5J	
205/50R16	CRA266	87	W		612/24.09	214/8.43	36/2.5	545/1201	6.5J	
205/55R16	CRA266	91	H		632/24.88	214/8.43	36/2.5	615/1356	6.5J	
205/55R16	CRA266	91	V		632/24.88	214/8.43	36/2.5	615/1356	6.5J	
205/55R16	CRA266	91	W		632/24.88	214/8.43	36/2.5	615/1356	6.5J	

Size	Pattern	Load Index	Speed Index	P. R.	O.D (mm/inches)	S.W (mm/inches)	Inflation (PSI/BAR)	Max Load (Kgs/LBS)	Standard Rim (Inches)	Remark
205/55R16	CRA266	94	V XL		632/24.88	214/8.43	42/2.9	670/1477	6.5	
215/55R16	CRA266	93	W		642/25.28	226/8.90	36/2.5	650/1433	7.0J	
215/55R16	CRA266	97	V XL		642/25.28	226/8.90	42/2.9	730/1609	7.0J	
215/55R16	CRA266	97	W XL		642/25.28	226/8.90	42/2.9	730/1609	7.0J	
225/55R16	CRA266	95	W		654/25.75	233/9.17	36/2.5	690/1521	7.0J	
225/55R16	CRA266	99	V XL		654/25.75	233/9.17	42/2.9	775/1708	7.0J	
225/55R16	CRA266	99	W XL		654/25.75	233/9.17	42/2.9	775/1708	7.0J	
205/60R16	CRA266	92	H		652/25.67	209/8.23	36/2.5	630/1389	6.0J	
205/60R16	CRA266	92	V		652/25.67	209/8.23	36/2.5	630/1389	6.0J	
215/60R16	CRA266	95	H		664/26.14	221/8.70	36/2.5	690/1521	6.5J	
215/60R16	CRA266	95	V		664/26.14	221/8.70	36/2.5	690/1521	6.5J	
225/60R16	CRA266	98	H/V		676/26.61	228/9.00	36/2.5	750/1653	6.5J	
205/65R16	CRA266	95	V		672/26.46	209/8.23	44/3.0	690/1521	6.0J	
215/65R16	CRA266	98	H/V		686/27.00	221/8.70	36/2.5	412/908	5.0B	
215/75R15	CRA280	100	H		703/27.68	216/8.50	36/2.5	800/1764	6.0J	M+S
215/75R15	CRA280	100	S		703/27.68	216/8.50	36/2.5	800/1764	6.0J	M+S
225/75R15	CRA280	102	S		719/28.31	223/8.78	36/2.5	850/1875	6.0J	M+S
235/75R15	CRA280	105	S		733/28.86	235/9.25	36/2.5	925/2040	6.5J	M+S
155R12C	CRA100	88/86	N	8PR	550/21.65	163/6.42	64/4.5	560/1325	4.5B	
155R13C	CRA100	85/83	N	8PR	578/22.76	157/6.18	50/3.5	515/1135	4.5B	
165R13C	CRA100	94/92	Q	8PR	596/23.46	167/6.57	64/4.5	670/1478	4.5J	
175R13C	CRA100	97/96	T	8PR	608/23.94	178/7.01	64/4.5	730/1069	5.0J	
165/70R13C	CRA100	88/86	T	8PR	562/22.13	170/6.69	54/3.75	560/1235	5.0J	
185R14C	CRA300	102/100	T	8PR	655/25.79	188/7.40	64/4.5	850/1874	5.5J	
195R14C	CRA300	106/104	S	8PR	666/26.22	198/7.80	60/4.5	950/2090	5.5J	
205R14C	CRA300	109/107	S	8PR	686/27.00	208/8.69	65/4.5	1030/2271 975/2149	6.0J	
185R15C	CRA300	103/102	S	8PR	674/26.54	188/7.40	64/4.5	875/1930	5.5J	
195R15C	CRA300	106/104	S	8PR	692/27.24	198/7.80	65/4.5	950/2094 900/1984	5.5J	
195/70R15C	CRA300	104/102	S	8PR	655/25.79	201/7.91	64/4.5	900/1985	6.0J	
205/70R15C	CRA300	106/104	S	8PR	669/26.34	209/8.23	64/4.5	950/2095	6.0J	
215/70R15C	CRA300	109/107	S	8PR	683/26.89	221/8.70	64/4.5	1030/2270	6.5J	
225/70R15C	CRA300	112/110	S	8PR	697/27.44	228/8.98	64/4.5	1120/2469	6.5J	
145/70R12	TW-2	69	T		509/20.04	150/5.91	36/2.5	325/717	4.5B	
155/70R13	TW-26	79	T		548/21.57	157/6.18	41/2.9	437/965	4.5B	
155/80R13	TW-1	79	S		578/22.76	157/6.18	35/2.4	437/965	4.5B	
165/80R13	TW-21	83	H		594/23.39	165/6.50	36/2.4	487/1074	4.5B	
175/65R14	TW-11	82	H		584/22.99	177/6.97	36/2.5	475/1047	5.0B	
185/65R14	TW-17	86	H		596/23.46	189/7.44	36/2.5	530/1169	5.5J	
195/70R14	TW-5	91	H		630/24.80	201/7.91	36/2.5	615/1356	6.0J	

Size	Pattern	Load Index	Speed Index	P. R.	O.D (mm/inches)	S.W (mm/inches)	Inflation (PSI/BAR)	Max Load (Kgs/LBS)	Standard Rim (Inches)	Remark
215/70R15	TW-19	98	H		683/26.89	221/8.70	36/2.5	705/1054	6.5J	
31*10.5R15LT	TW-32	109	S	6PR	775/30.51	268/1055	50/3.5	1030/2275	8.5J	M+S WLW
195/75R16C	TW-39	110/108	Q	10PR	698/27.48	196/7.72	80/5.5	1060/2338	5.5J	
245/70R16	TW-16	107	S		750/29.53	248/9.76	43/3.0	975/2150	7.0J	M+S
265/70R16	TW-8	112	S		778/30.63	272/10.71	50/3.5	1120/2470	8.0J	M+S WLW
275/70R16	TW-8	114	T		792/31.18	279/1098	50/3.5	1180/2602	8.0J	M+S WLW
235/70R16	CRC988	106	T		736/29.00	240/9.40	36/2.5	950/2094	7.0J	
235/60R16	CRC618	100	H		688/27.10	240/9.40	36/2.5	800/1764	7.0J	
215R14C	TW-22	112/110	Q	8PR	700/27.60	218/8.58	64/4.5	1120/2470	6.0J	
175R14C	TW-22	99/98	T	8PR	634/24.96	178/7.01	64/4.5	775/1708	5.0J	
175/70R14C	TW-22	99/98	T	8PR	627/24.70	201/8.00	65/4.5	775/1708 750/1655	5.0J	
215/75R14C	TW-1	112/110	Q	8PR	678/26.69	216/8.50	67/4.75	1120/2470	6.0J	
6.50R15C	TW-6	107/105	M	10PR	730/28.74	180/7.09	78/5.5	975/2150	5.5F	
7.00R15C	TW-6	116/108	M	12PR	750/29.53	200/7.87	95/6.7	1250/2756	5.5F	
6.50R16C	TW-6	108/107	N	10PR	750/29.53	185/7.28	73/5.0	1000/2205	5.5F	
7.00R16C	TW-6	117/116	N	12PR	775/30.51	200/7.87	95/6.7	1285/2833	5.5F	
7.50R16C	TW-6	121/117	M	14PR	805/31.69	215/8.46	107/7.4	1450/3200	5.5F	



TIANJIN CENTURY RUBBER CO.,LTD.

ADD: JINHAI ROAD,JINGHAI ECONOMIC DEVELOPMENT ZONE,TIANJIN CHINA

PAST COAD: 301600

TEL: 86-22-59528766

FAX: 86-22-59528765

WEB: www.chinatopyre.com

E-MAIL: toptyre@chinatopyre.com