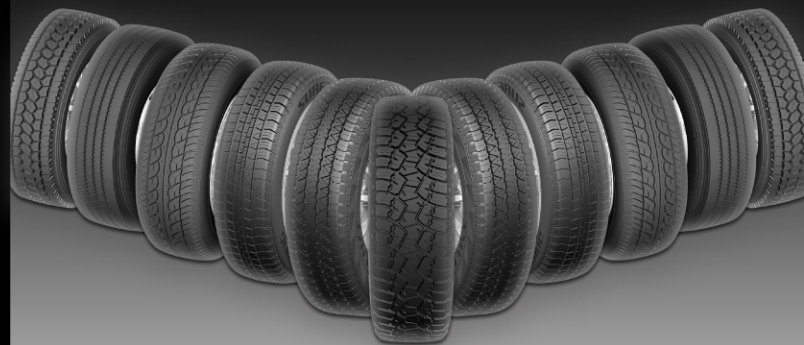




SURETRAC TIRE

2014



Staridge Inc.

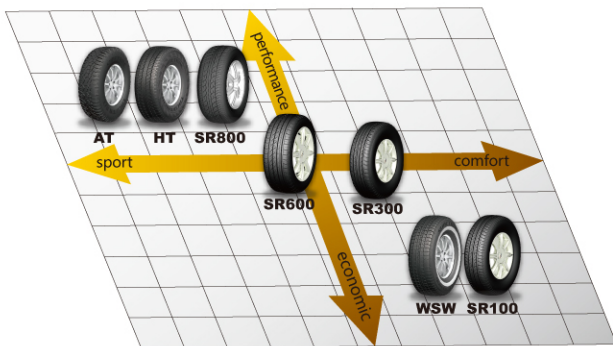
Add: 9999 Bellaire Blvd STE 920, Houston, TX 77036 (USA)
Rm 1705 Tower H, No.6 Shuguang Xili, Chaoyang District,
Beijing, China 100028 (China)
Tel: +1-832 539 4009 (USA) +86-10-84404936 (China)
E-mail: sophia@staridge.com
Website: www.staridge.com

Table of contents



Semi Steel Tire1-8
 Medium Truck Radial Tire.....9-14
 Agricultural&Industrial Tire.....15-20
 Limited Warranty21-22

Semi Steel Tire Map



- The design of pattern makes good performance
- Steel radial tyre for trailer service, five ribs
- Coillywarpped layer of overlay cap deliver uniform wear and long haulage



SPECIALTY TRAILER RADIAL SPECIALTY TRAILER RADIAL

Size	P.R.	L.I./ Speed	Rim inch	S.W. inch	O.D. inch	Max.Press psi	Max Load lbs
ST175/80R13	C	91/87L	5	7.0	24.0	50	1360
ST205/75R14	C	100/96L	5.5	7.0	26.1	50	1760
ST205/75R15	C	101/97L	5.5	8.0	27.1	50	1820
ST205/75R15	D	107/102L	5.5	8.0	27.1	65	2150
ST225/75R15	D	113/108L	6	8.8	28.3	65	2540
ST225/75R15	E	117/112L	6	8.8	28.3	80	2830
ST235/80R16	E	124/120L	6.5	9.3	30.8	80	3520

- Wide tread to ensure uniform wear high haulage
- Applicable to all-weather use good performance on all road condition



LIGHT TRUCK RADIAL RADIAL H/T

Size	L.I./Speed	P.R.	Rim inch	S.W. inch	Max. Press psi	Max. Load lbs	T/D 32nds
LT215/85R16	115/112Q	10	6.0	8.5	80	2678	13
LT235/85R16	120/116Q	10	6.5	9.3	80	3039	13
LT225/75R16	115/112Q	10	6.0	8.8	80	2678	13
LT245/75R16	120/116Q	10	7.0	9.8	80	3039	13
LT265/75R16	123/120Q	10	7.5	10.5	80	3412	13
LT285/75R16	122/119Q	8	8.0	11.3	65	3302	13
LT285/75R16	126/123Q	10	8.0	11.3	80	3747	13
LT245/70R17	119/116Q	10	7.0	9.8	80	2753	13
LT265/70R17	121/118Q	10	8.0	10.7	80	2907	13
LT285/70R17	121/118Q	8	8.5	11.5	65	2907	13
P265/70R17	113T	STD	8.0	10.7	44	2533	10
P235/70R16	104T	STD	7.0	9.4	44	1984	10
P255/70R16	109T	STD	7.5	10.2	44	2271	10
P265/70R16	111T	STD	8.0	10.7	44	2403	10
P225/65R17	100T	STD	6.5	9.0	44	1764	10
P235/65R17	103T	STD	7.0	9.4	44	1929	10
P245/65R17	105T	STD	7.0	9.8	44	2039	10
P265/65R17	110T	STD	8.0	10.7	44	2337	10
P255/55R18	104T	STD	8.0	10.4	44	1984	10
P265/70R18	114T	STD	8.0	10.7	44	2601	10
P235/65R18	104T	STD	7.0	9.4	44	1984	10

- A block groove makes a small moving angel of the tread block when cornering to secure safe cornering running performance
- The scallop grooves between the tread blocks increase the tire's biting edges to enhance traction on the off-road



LIGHT TRUCK&SUV RADIAL A/T

SIZE	Sidewall	P.R.	L.I./ Speed	Rim inch	S.W. inch	O.D. inch	Max. Press psi	Max. Load lbs	T.D. 32nds
LT215/85R16	OWL	10	115/112 S	6J	8.5	30.4	80	2679	13
LT235/85R16	OWL	10	120/116 S	6 1/2J	9.3	31.7	80	3040	13
LT245/75R16	OWL	10	120/116 S	7J	9.8	30.5	80	3040	13
LT265/75R16	OWL	10	123/120 S	7 1/2J	10.5	31.7	80	3413	13
LT285/75R16	OWL	8	122/119 Q	8J	11.3	32.8	65	3303	13
LT245/75R17	OWL	10	121/118 S	7J	9.8	30.5	80	3192	13
LT265/70R17	OWL	10	121/118 Q	8J	10.7	31.7	80	3192	13
LT275/65R18	OWL	10	123/120 S	8J	11	32.1	80	3413	13
P235/75R15	OWL	XL	108 T	6 1/2J	9.3	28.9	51	2180	10
P265/70R16	OWL	STD	111T	8J	10.7	30.6	44	2401	10
P265/70R17	OWL	STD	113 T	8J	10.7	31.7	44	2533	10
P275/65R18	OWL	STD	114 T	8J	11	32.1	44	2599	10
P275/55R20	OWL	STD	111T	8 1/2J	11.2	31.9	44	2401	10
LT225/75R16	OWL								
LT285/70R17	OWL								
LT275/65R20	OWL								
33X12.50R20LT	OWL								
35X12.50R20LT	OWL								

- Wider white side wall
- Applicable to all-weather use
- Better traction, low noise, ride comfort; Extra ply of overlay cap to ensure uniform wear, high haulage



PASSENGER WHITE WALL P-WSW

Size	Sidewall	L.I./ Speed	Rim inch	S.W. inch	O.W. inch	Max. Press psi	Max. Load lbs	T/D 32nds
P175/75R14	WSW	86S	5J	7.0	24.3	44	1168	10
P175/70R14	WSW	84S	5J	7.0	23.7	44	1102	10
P195/75R14	WSW	92S	5.5	7.7	25.5	44	1400	10
P205/75R14	WSW	95S	5.5	8.0	26.1	44	1532	10
P205/75R15	WSW	97S	5.5	8.0	27.1	44	1598	10
P215/75R15	WSW	100S	6	8.5	27.7	44	1742	10
P225/75R15	WSW	102S	6	8.8	28.3	44	1874	10
P235/75R15	WSW	105S	6.5	9.3	28.9	44	2028	10
P205/70R15	WSW	95S	6	8.2	26.3	44	1499	10
P215/70R15	WSW	97S	6.5	8.7	26.9	44	1620	10
P225/70R15	WSW	100S	6 1/2J	9.0	27.4	44	1753	10
P225/60R16	WSW	100S	6 1/2J	9.0	26.6	44	1609	10

- Straight Aqua Channel to enhance wet performance
- Lateral Groove Enhanced rapid water dispersal & Wet traction performance with streamline groove.
- Low-noise design with 3 pitch sequence for secured driving comfort



PASSENGER CAR TIRES TOUR-SR100

Size	L.I.	Speed index	Rim inch	S.W. inch	O.W. inch	Max. Press psi	Max. Load lbs	T/D 32nds
175/65R14	82	T	5J	7.0	23.0	44	1047	10
175/65R14	82	H	5J	7.0	23.0	44	1047	10
175/70R13	82	T	5.00B	7.0	22.7	44	1047	10
175/70R13	82	H	5.00B	7.0	22.7	44	1047	10
185/70R14	88	T	5 1/2J	7.4	24.3	44	1235	10
185/70R14	88	H	5 1/2J	7.4	24.3	44	1235	10

- Four straight grooves designed patterns enhance the prevention from hydroplaning.
- This pattern is the leader of superior performance.
- It is suitable on bumpy and soft roads as well as wild side.



PASSENGER CAR TIRES SPORT-SR800

Size	L.I.	Speed index	Rim inch	S.W. inch	O.W. inch	Max. Press psi	Max. Load lbs	T/D 32nds
245/35ZR20	95 XL	W	8 1/2J	9.8	26.8	50	1521	9.8
245/35ZR20	95 XL	Y	8 1/2J	9.8	26.8	50	1521	9.8
255/35ZR20	97 XL	W	9J	10.2	27.0	50	1609	9.8
255/35ZR20	97 XL	Y	9J	10.2	27.0	50	1609	9.8

- Straight Aqua channel to enhance wet performance
- Straight Center Rib to improve snow traction
- Low-noise design with 3 pitch sequence for secured driving comfort
- Aggressive sidewall design



PASSENGER CAR TIRES PERFORMANCE-SR300

Size	L.I.	Speed index	Rim inch	S.W. inch	O.W. inch	Max. Press psi	Max. Load lbs	T/D 32nds
185/60R14	82	H	51/2J	7.4	22.8	44	1047	9.8
185/65R14	86	T	51/2J	7.4	23.5	44	1168	9.8
185/65R14	86	H	51/2J	7.4	23.5	44	1168	9.8
* 195/60R14	86	H	6J	7.9	23.2	44	1168	9.8
* 195/70R14	91	T	6J	7.9	24.8	44	1356	9.8
* 185/55R15	82	V	6J	7.6	23.0	44	1047	9.8
* 185/65R15	88	T	51/2J	7.4	24.4	44	1235	9.8
* 185/65R15	88	H	51/2J	7.4	24.4	44	1235	9.8
* 195/50R15	82	H	6J	7.9	22.7	44	1047	9.8
* 195/50R15	82	V	6J	7.9	22.7	44	1047	9.8
* 195/55R15	85	V	6J	7.9	23.4	44	1135	9.8
195/60R15	88	H	6J	7.9	24.2	44	1235	9.8
195/60R15	88	V	6J	7.9	24.2	44	1235	9.8
195/65R15	91	H	6J	7.9	25.0	44	1356	9.8
195/65R15	91	V	6J	7.9	25.0	44	1356	9.8
205/65R15	94	H	6J	8.2	25.5	44	1477	9.8
205/65R15	94	V	6J	8.2	25.5	44	1477	9.8
205/55R16	91	H	61/2J	8.4	24.9	44	1356	9.8
205/55R16	91	V	61/2J	8.4	24.9	44	1356	9.8
215/60R16	95	H	61/2J	8.7	26.1	44	1521	9.8
215/60R16	95	V	61/2J	8.7	26.1	44	1521	9.8
215/65R16	98	H	6 1/2J	8.7	27.0	44	1653	9.8
225/60R16	98	H	61/2J	9.0	26.6	44	1653	9.8
225/60R16	98	V	61/2J	9.0	26.6	44	1653	9.8

- 4-wide straight Aqua channel to enhance wet performance
- Jointless Cap Ply to improve uniformity performance
- Asymmetric pattern design to enhance tyre performance and innovative functions
- Jointless Bead Wire & High Hardness Bead Filler improve high speed stability and deliver better handling and steering response



PASSENGER CAR TIRES HP-SR600

Size	L.I.	Speed index	Rim inch	S.W. inch	O.W. inch	Max. Press psi	Max. Load lbs	T/D 32nds
* 175/50R16	77	V	5 1/2J	7.2	22.9	44	908	9.8
* 185/50R16	81	V	6J	7.6	23.3	44	1019	9.8
* 195/50R16	88 XL	V	6J	7.9	23.7	50	1235	9.8
205/40R17	84 XL	W	71/2J	8.3	23.5	51	1102	9.8
* 205/45R17	88 XL	W	7J	8.1	24.3	51	1235	9.8
* 205/50R17	93 XL	W	61/2J	8.4	25.1	51	1433	9.8
* 215/40R17	87 XL	W	71/2J	8.6	23.8	51	1201	9.8
215/45R17	91 XL	W	7J	8.4	24.6	51	1356	9.8
215/45R17	87	W	7J	8.4	24.6	44	1201	9.8
225/45R17	94 XL	W	71/2J	8.9	25.0	51	1477	9.8
* 225/55R17	101 XL	W	7J	9.2	26.8	51	1819	9.8
235/45R17	97 XL	W	8J	9.3	25.4	51	1609	9.8
* 235/55R17	103 XL	W	71/2J	9.6	27.2	51	1929	9.8
* 215/35R18	84 XL	W	71/2J	8.6	23.9	51	1102	9.8
225/40R18	92 XL	W	8J	9.1	25.1	51	1389	9.8
* 235/40R18	95 XL	W	81/2J	9.5	25.4	51	1521	9.8
* 195/40ZR17	81 XL	W	7J	7.9	23.1	50	1019	9.8
* 195/45ZR17	85 XL	W	61/2J	8.0	23.9	50	1135	9.8
* 215/40ZR18	85	W	71/2J	8.6	24.8	44	1135	9.8
* 215/40ZR18	85	Y	71/2J	8.6	24.8	44	1135	9.8
* 245/40ZR18	97 XL	W	81/2J	9.8	25.7	50	1609	9.8
* 215/45ZR18	89	W	7J	8.4	25.6	44	1279	9.8
* 215/45ZR18	89	Y	7J	8.4	25.6	44	1279	9.8

- Designed for steering wheel position, suitable for trailer wheel position as well
- Applied for express way and high grade roads
- Special angle decoupler design enables tire with side-skid resistance
- Wide pattern for lower rolling resistance, effectively disperses heat, and realizes high-speed performance



MEDIUM TRUCK RADIAL STEER-RT256

Size	P.R.	Tube Type	Load Index	Speed Symbol	O.D. inch	S.W. inch	T.D. 32nds	Rim Size inch	Max Load		Pressure	
									Single lbs	Dual lbs	Single psi	Dual psi
11R22.5	14	TL	144/142	M	41.4	10.9	19	8.25	6175	5840	105	105
11R22.5	16	TL	146/143	L	41.4	10.9	19	8.25	6610	6005	120	120
295/75R22.5	14	TL	144/141	M	40.0	11.4	19	9.00	6175	5675	110	110
295/75R22.5	16	TL	146/143	L	40.0	11.4	19	9.00	6610	6005	120	120
11R24.5	14	TL	146/143	L	43.4	10.9	19	8.25	6610	6005	105	105
11R24.5	16	TL	149/146	L	43.4	10.9	19	8.25	7170	6610	120	120
285/75R24.5	14	TL	144/141	M	41.3	11.0	19	8.25	6175	5675	110	110
275/80R22.5	16	TL	148/145	M	40.0	11.2	19	8.25	6780	6175	120	120

- Suitable for driving wheel of vehicle
- Applied for express way and high grade roads
- Wide tread ensures high gripping force and powerful driving. Contacting road surface evenly improves wear-resistance
- Special groove design effectively prevents stones lodged in the tread and offers protection for tire body
- Deep tread for long haulage



MEDIUM TRUCK RADIAL DRIVE-RT369

Size	P.R.	Tube Type	Load Index	Speed Symbol	O.D. inch	S.W. inch	T.D. 32nds	Rim Size inch	Max Load		Pressure	
									Single lbs	Dual lbs	Single psi	Dual psi
11R22.5	14	TL	144/142	L	42.0	10.9	29	7.5	6175	5840	105	105
11R22.5	16	TL	146/143	L	42.0	10.9	29	7.5	6610	6005	120	120
295/75R22.5	14	TL	144/141	L	40.6	11.4	29	8.25	6175	5675	110	110
295/75R22.5	16	TL	146/143	M	40.0	11.4	29	8.25	6610	6005	120	120
11R24.5	14	TL	146/143	L	44.0	10.9	29	7.5	6610	6005	105	105
11R24.5	16	TL	149/146	L	44.0	10.9	29	7.5	7170	6610	120	120
285/75R24.5	14	TL	144/141	L	42.0	11.0	29	7.50	6175	5675	110	110
*275/80R22.5	16	TL	148/145	L	40.6	11.2	29	7.50	6779	6175	120	120

- Special design for trailer wheel position for long distance transportation
- Applied for express way and high grade roads
- Optimized pattern design offers extra wear-resistance and prevents uneven wear



MEDIUM TRUCK RADIAL TRAILER-RT803

Size	P.R.	Tube Type	Load Index	Speed Symbol	O.D. inch	S.W. inch	T.D. 32nds	Rim Size inch	Max Load		Pressure	
									Single lbs	Dual lbs	Single psi	Dual psi
11R22.5	14	TL	144/142	M	42.0	10.9	14	8.25	6175	5840	105	105
11R24.5	14	TL	146/143	M	44.0	10.9	14	8.25	6610	6005	105	105
295/75R22.5	14	TL	144/141	M	40.0	11.4	14	9.00	6175	5675	110	110

- Designed for all wheel positions, and also for drive wheel and trailer truck tire
- Applied for high speed and grade road with paved surface
- Excellent anti-irregular-wear performance
- Chip&Cut compound



MEDIUM TRUCK RADIAL CHIP&CUT-RT518

Size	P.R.	Tube Type	Load Index	Speed Symbol	O.D. inch	S.W. inch	T.D. 32nds	Rim Size inch	Max Load		Pressure	
									Single lbs	Dual lbs	Single psi	Dual psi
* 9.00R20	16	TL	144/142	K	40.1	10.2	18	7.00	6173	5842	131	131
* 10.00R20	16	TL	146/143	K	41.5	10.9	19	7.50	6614	6008	120	120
* 10.00R20	18	TL	149/146	K	41.5	10.9	19	7.50	7165	6614	135	135
* 11.00R20	16	TL	150/147	K	42.7	11.5	20	8.00	7385	6779	120	120
* 11.00R20	18	TL	152/149	K	42.7	11.5	20	8.00	7826	7165	135	135
* 12.00R20	18	TL	154/151	K	44.3	12.4	21	8.50	8267	7606	120	120
11R22.5	14	TL	144/142	L	42.0	10.9	20	8.25	6175	5840	105	105
11R22.5	16	TL	146/143	L	42.0	10.9	20	8.25	6610	6005	120	120
12R22.5	16	TL	150/147	L	42.7	11.8	21	9	7390	6780	120	120
12R22.5	18	TL	152/149	L	42.7	11.8	21	9	7830	7170	135	135
11R24.5	14	TL	146/143	L	44.0	10.9	20	8.25	6610	6005	105	105
11R24.5	16	TL	149/146	L	44.0	10.9	20	8.25	7170	6610	120	120

- Mainly for all positions
- Applied for express way and high grade roads
- Special steel slice design enables tire with side-skid resistance, and good water evacuation improves stability
- Unique strip pattern offers excellent high-speed performance, and lower rolling resistance



MEDIUM TRUCK RADIAL HIGHWAY-RT236

Size	P.R.	Tube Type	Load Index	Speed Symbol	O.D. inch	S.W. inch	T.D. 32nds	Rim Size inch	Max Load		Pressure	
									Single lbs	Dual lbs	Single psi	Dual psi
12R22.5	16	TL	146/143	L	42.4	11.8	20	8.25	7390	6780	120	120
12R22.5	18	TL	152/149	L	42.4	11.8	20	8.25	7830	7170	135	135
315/80R22.5	18	TL	156/151	L	42.5	12.4	21	9.75	8270	7610	120	120
315/80R22.5	20	TL	156/151	L	42.5	12.4	21	9.75	9090	8270	130	130

- 5 ribs with four wide, straight grooves for precise handling and outstanding traction
- Solid shoulder helps to minimize shoulder wear and improve cost per mile
- Advanced cool-running tread compounds reduces heat generated and increases irregular wear resistance resulting in higher mileage



MEDIUM TRUCK RADIAL HIGHWAY-RT216

Size	P.R.	Tube Type	Load Index	Speed Symbol	O.D. inch	S.W. inch	T.D. 32nds	Rim Size inch	Max Load		Pressure	
									Single lbs	Dual lbs	Single psi	Dual psi
385/65R22.5	18	TL	158	K	42.5	15.3	21	11.75	9370	9370	120	120
385/65R22.5	20	TL	160	J	42.5	15.3	21	11.75	9920	9920	130	130

- Heavy duty rear wheel tyre with dual angled tread lugs, which provide high traction and long life both in field and on road operations
- Strong casing for excellent stability and safety to the operator
- Also ideally suited for industrial/construction operations



Agricultural Tire TRACTOR TIRE R-1

Size	P.R.	Tube Type	Rim Size	Pressure psi	S.W. inch	O.W. inch
* 5.00-12	4	TT	4.00E	29	5	23.2
* 6.00-12	6	TT	4.50E	26	6	25.2
* 6.00-14	6	TT	4.50E	36	6	27.2
* 6.00-16	8	TT	4.50E	36	6	29.3
* 6.50-16	8	TT	4.50E	36	6.5	30.1
* 7.50-16	8	TT	4.50E	30	7.5	31.9
8.3-20	8	TT	5.50E	35	8.3	35.2
8.3-24	6	TT	W7	35	8.3	39.2
9.5-24	6	TT	W8	30	9.5	41.3
11.2-24	6	TT	W10	35	11.2	43.5
12.4-24	8	TT	W11	33	12.4	45.7
13.6-24	8	TT	W12	29	13.6	47.6
14.9-24	8	TT	W13	26	14.9	49.8
11.2-28	6	TT	W10	26	11.2	47.4
12.4-28	8	TT	W11	33	12.4	49.6
13.6-28	8	TT	W12	29	13.6	51.6
14.9-28	8	TT	W13	33	14.9	53.7
16.9-28	8	TT	W15L	29	16.9	56.5
16.9-30	10	TT	W15L	29	16.9	58.5
18.4-30	10	TT	W16L	26	18.4	61
16.9-34	10	TT	W15L	29	16.9	62.4
18.4-34	10	TT	W16L	26	18.4	65.2
11.2-38	8	TT	10.00	17	11.2	57.4
15.5-38	12	TT	W14L	26	15.5	61.8
18.4-38	10	TT	W16L	26	18.4	69.1
20.8-38	8	TT	W18L	26	20.8	72.2

- Three Rib front wheel tires, designed for easy steering
- Also suitable for use on certain agricultural machines



Agricultural Tire TRACTOR FRONT TIRES F-2

Size	P.R.	Tube Type	Rim Size	Pressure psi	S.W. inch	O.W. inch
400-12	4	TT/TL	3.00D	49	4	21.1
500-15	4	TT/TL	4J	61	5	26.2
7.5L-15	8	TT/TL	6LB	54	7.5	29.3
9.5L-15	8	TT	8LB	45	9.5	30.7
11L-15	8	TT	8LB	49	11	31.9
550-16	8	TT/TL	4.00E	54	5.5	28
600-16	8	TT/TL	4.00E	61	6	29.1
650-16	8	TT/TL	4.50E	61	6.5	29.9
750-16	8	TT/TL	5.50F	54	7.5	31.9
750-18	8	TT/TL	5.50F	54	7.5	33.9
400-19	4	TT/TL	3.00D	49	4	28.3
750-20	8	TT/TL	5.50F	54	7.5	35.8
10.00-16	10	TT/TL	W8L	49	10	35.8
11.00-16	10	TT/TL	W10L	45	11	38.2
11.00-16	12	TL	W10L	45	11	38.2
10.00-16 4R	10	TT/TL	W8L	49	10	35.8
11.00-16 4R	10	TT	W10L	45	11	38.2
11.00-16 4R	12	TL	W10L	45	11	38.2

- Specially designed for high load capacities at low inflation pressures, minimizing soil compaction and preventing damage to crops
- Ideally suited for agricultural implement & trailer uses off the road



Agricultural Tire IMPLEMENT TIRE I-1

Size	P.R.	Tube Type	Rim Size	Pressure psi	S.W. inch	O.W. inch
11L-14	8	TT/TL	8LB	32	11	29.2
9.5L-15	8	TT/TL	8LB	41	9.5	30.7
11L-15	8	TT/TL	8LB	41	11	31.9
11L-15	12	TT/TL	8LB	41	11	31.9
760L-15	8	TT/TL	5.50	52	7.6	28.9
12.5L-15	12	TT/TL	10.00	52	12.5	32.4
11L-16	8	TT/TL	8LB	41	11	32.9

- Low section height design, with tread pattern suitable for agricultural implement and trailers
- Also suitable for industrial applications such as backhoe loader



Industrial Tire F-3

Size	P.R.	Tube Type	Rim Size	Pressure psi	S.W. inch	O.W. inch
11L-15	10	TL	8LB	52	11.0	31.9
11L-16	10	TL	8LB	52	11.0	32.9
11L-16	12	TL	8LB	64	11.0	32.9

- Drive Wheel tires for Industrial Tractors made with a pattern having extra wide lugs with extensive overlap at the centre, gives resistance to buckling, tearing and cracking
- Super Compound and Tough Nylon casing gives best results on industrial use as well as for off-the-road and construction sites



Industrial Tire R-4

Size	P.R.	Tube Type	Rim Size	Pressure psi	S.W. inch	O.W. inch
16.9-24	10	TL	W15L	38	16.9	51.6
16.9-28	10	TL	W15L	29	16.9	55.5
17.5L-24	10	TL	W15L	32	17.5	48.8
19.5L-24	12	TL	DW17	33	19.5	51.8
21L-24	12	TL	DW18	36	21.0	54.1

- Premium tyre with Extra Deep Tread & thick sidewalls providing better traction, puncture resistance and a longer life
- Compounded with a superior blend of Silica and natural rubber to provide chip and tear resistance for extended tread life



Industrial Tire Skid Steer - Block Pattern

Size	P.R.	Tube Type	Rim Size	Pressure psi	S.W. inch	O.W. inch
10-16.5	10	TL	8.25	75	10.0	30.3
12-16.5	10	TL	9.75	65	12.0	33.1
14-17.5	14	TL	10.5	81	14.0	36.2
15-19.5	14	TL	11.75	26	15.0	40.2

- Designed for forklift trucks and service on material handling equipment
- Designed with an alternate continuous lug that provided increased footprint for maximum stability, handling and load distribution
- Natural rubber based tread compound is resistant to tears and cuts



Industrial Tire FORKLIFT

Size	P.R.	Tube Type	Rim Size	Pressure psi	S.W. inch	O.W. inch
5.00-8	10	TT	3.50D	116	5.5	18.5
6.00-9	10	TT	4.00E	123	6.0	21.3
6.50-10	12	TT	5.00F	112	6.5	23.2
7.00-12	14	TT	5.00S	123	7.0	26.6
8.15-15	14	TT	6.5	102	8.15	28.0
8.25-15	14	TT	6.5	116	8.25	33.1

- With sidewall and rim guard protectors, meant for the value conscious yet performance oriented applications



Industrial Tire SKID STEER

Size	P.R.	Tube Type	Rim Size	Pressure psi	S.W. inch	O.W. inch
10-16.5	10	TL	8.25	76	10.0	30.3
12-16.5	12	TL	9.75	65	12.0	33.1

- Suited for small industrial vehicles and municipal works
- Good resistance to abrasion and tear with maximum traction



Industrial Tire IND-3

Size	P.R.	Tube Type	Rim Size	Pressure psi	S.W. inch	O.W. inch
10.5/80-18	10	TL	9	54	10.5	35.6
12.5/80-18	12	TL	9	54	12.5	35.8

Limited Warranty (TBR)

Every new tire purchased from Staridge.Inc.(STARIDGE) is warranted by this policy.

The Staridge assures the customer by offering warranty against products failures attributed to deficiency in design, materials & workmanship. Compensation to the customer is offered equivalent to the value of the remaining life of the product, which has failed due to manufacturing defect.

Every efforts will be made by Staridge to secure the highest possible standard of quality of both material and workmanship.

LIMITED WARRANTY

FREE TIRE REPLACEMENT— During the first 2/32nds of an inch (1.6 mm) of the original usable tread, tire will be replaced with a comparable new tire free of charge. The mounting, balancing service and any other charges in connection with the replacement of the tire should be paid by owner.

PRORATED TIRE REPLACEMENT— after the first 2/32nds of an inch (1.6 mm) of the original usable tread, the compensation amount will be determined by multiplying the Purchased FOB CHINA Price by the percentage of original usable tread depth remaining on the tire ONLY IF:

- All claimed tires, must have a fulfilled Claim Form, provided by Stridge and signed by the users and agents.
- The claimed tires should be authenticated by the person authorized by Stridge
- At the time of the adjustment claim and the original invoice for purchase of the tires are presented
- The tires have not become unserviceable due to a condition listed under WHAT IS NOT COVERED.

The cost of mounting, balancing and any other service charges should be paid by owner.

Original Useable Tread Depth Remaining on Returned Tire
Compensation amount = FOB Price X $\frac{\text{Original Useable Tread Depth Remaining on Returned Tire}}{\text{Original Useable Tread Depth on New Tire}}$

Original Useable Tread Depth Remaining on Returned Tire : the returned tire tread depth minus 2/32nds of an inch (1.6 mm) ,when tire was worn down to 2/32nds of an inch (1.6 mm) remaining at which point the tire is considered fully worn out.

Original Useable Tread Depth on New Tire: the new tire tread depth minus 2/32nds of an inch (1.6 mm)

PRODEDURE

The customer shall report to the Staridge the details of the product, which has failed due to manufacturing defect in the Claim form (attached), along with the picture of the Failed product showing the defect and in the product.

On receipt of the claim form & the pictures of the failed product, Stridge will check the claim and in case it is confirmed, adjustment will be made based on the report. If necessary, customer will be requested to hold the failed product for examination by their Technician.

Credit against the approved claims shall be given either against next consignment .

Name & address including e mail id, of the Manufacturer's representative, to whom the claim forms are to be sent should be mentioned on the claim form.

WHAT IS NOT COVERED

- A. Tire damage due to incorrect storage after leaving the warehouse. (Direct sunlight, excessive temperatures and humidity).
- B. Adding any substance to the tire after leaving factory
- C. Tire re-grooving
- D. Tire damage due to structural changes: due to repairs processed by third party or tires used with defective components such as tubes or rims.
- E. Incomplete tire serial number, forged quality markings, identification and ply rating
- F. Improper inflation, overloading, over-speeding, wheel spinning, misapplication.
- G. Improper mounting, dismounting, mechanical condition of the vehicle, chain damage etc...
- H. Complaint about fast wear (under-inflation, cornering, wheel spinning, over-speeding etc..)
- I. Tread chipping and chunking, due to the road surface conditions.
- J. Tire jitter or hop because tire out of round , rim or car condition, but tire pattern has been worn out over 2MM.
- K. Loss of time, inconvenience due to loss of vehicle usage, extra costs including rental and legal fees, due to damaged/claimed tire.
- L. Damage or puncture due to hard external objects
- M. For racing or misapplication
- N. Corrosive liquid and solid, or ozone and other materials resulting in tire damage.

This limited warranty policy applied in the year 2014.