



RHINO
Build Tough, Drive Safe



PRODUCT CATALOGUE



QINGDAO RHINO TYRE CO., LTD.

Rm1502 D&D Fortune Mansion No.182-6 Haier Road, Qingdao China

Post Code: 266061

Tel:0086-532-80662967 Fax:0086-532-80662976

[Http://www.rhinotyres.com](http://www.rhinotyres.com)

Email: rhino@rhinotyre.com

PCR

QINGDAO RHINO TYRE CO., LTD.

www.rhinotyres.com



COMPANY INTRODUCTION



A Quality Tyre Comes From.....

- Professional Dedicated Engineering Team
- Scientific Workshop & Production Management
- Advanced & Complete Laboratory Equipment
- Strict Quality Control System
 - ↳ ISO 9001:2008
 - ↳ Ts16949
 - ↳ ISO14001
- Professional and Responsible Staff

Rhino is a professional manufacturer of tyres in China founded in 2005. Mainly products are HP Tyre, UHP Tyre, Suv Tyre, Winter Tyre, ST Trailer Tyre, Light Truck Tyre and relative wheel rim etc. With over 10 years of combined experience in the automotive and tyre industry, Rhino hit the ground running and has grown to famous brand in the world with distribution in South America, Europe, Australia, South Africa and Canada, U.S.A etc. Rhino tyres have approved to ISO, DOT, ECE, Smark, Reach, Labeling, GCC, Inmetro and Soncap and got high reputation from customers.

The long-term plan is continue growth by expanding production capability and invest new products. Now Rhino could produce 6 million tyres with "RHINO" brand for 10 series and more than 100 sizes and will reach 10 million tyres in 2016.

Warranty:

All tyres are guaranteed against any manufacturing defects

Service concentrated on customers' satisfaction

Professional Sales Team----Staff with years experience to help to answer your questions within 24 hours and meet your business needs
 Responsive warehouse staff to respond to your shipment needs and make prompt shipment
 Favorable terms and conditions to build cooperation relationship

Visit us at www.rhinotyres.com.
 RHINO Tyres will be always at your services!!



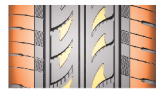


RHINO

Build Tough, Drive Safe



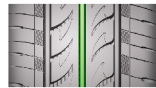
ECO155



Shark Fin Tread Pattern
Split Type Shoulder Block Design



The six horizontal steps equally distributed can effectively decompose the pumping noise source, reduce noise, greatly promote the rigidity between the tread pattern blocks and eliminate sundries in the groove.

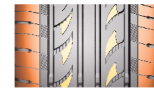


Small Knurl Design on Side Wall of Groove. It can eliminate the pumping generated between the groove and ground and reduce the driving noise.

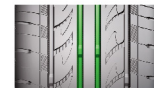
Series	Size	Load Index	Speed Rating	Standard Rim	Section Width (mm)	Overall Diameter (mm)	Tread Depth (mm)	Max. Load (kg)	Max. Pressure (Kpa)
13	155/70R13	75	T	5.0 B	157	548	7.5	387	300
	165/70R13	79	T	5.0 B	170	562	7.5	437	300
	175/70R13	82	T	5.0 B	177	576	7.5	475	300
14	185/60R14	82	T/H	5.5 J	189	578	7.5	475	300
	185/65R14	86	T	5.5 J	188	596	7.5	530	300

ECONOMIC CAR

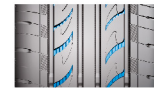
ECO155



Shark Fin Tread Pattern
Split Type Shoulder Block Design



The six horizontal steps equally distributed can effectively decompose the pumping noise source, reduce noise, greatly promote the rigidity between the tread pattern blocks and eliminate sundries in the groove.



Small Knurl Design on Side Wall of Groove. It can eliminate the pumping generated between the groove and ground and reduce the driving noise.

Series	Size	Load Index	Speed Rating	Standard Rim	Section Width (mm)	Overall Diameter (mm)	Tread Depth (mm)	Max. Load (kg)	Max. Pressure (Kpa)
13	155/65R13	73	T	4.5 B	157	532	7.5	365	300
	155/80R13	79	T	4.5 B	157	578	7.5	437	300
	165/65R13	77	T	5.0 B	170	544	7.5	412	300
	185/70R13	86	T	5.5 B	189	590	7.5	530	300
	165/70R14	81	T	5.0 J	170	588	7.5	462	300
14	175/65R14	82	T	5.0 J	177	584	7.5	475	300
	175/70R14	84	T	5.0 J	177	602	7.5	500	300
	185/70R14	88	T	5.5 J	189	616	7.5	560	300
	195/60R14	86	T/H	6.0 J	201	590	7.5	530	300
	195/70R14	91	T	6.0 J	201	630	7.5	615	300
15	205/70R14	98 XL	T	6.0 J	209	644	8.2	750	340
	205/70R15	96	T	6.0 J	209	669	8.2	710	300
	215/60R16	95	T/H	6.5 J	221	664	8.2	690	300
16	225/60R16	98	T/H	6.5 J	228	676	8.2	750	300

ECONOMIC CAR



RHINO
Build Tough, Drive Safe



GTR501

Series	Size	Load Index	Speed Rating	Standard Rim	Section Width (mm)	Overall Diameter (mm)	Tread Depth (mm)	Max. Load (kg)	Max. Pressure (Kpa)
12	155R12C	83/86	S	4.5 B	157	553	8.0	487/462	350
	155R13C	85/83	Q	4.5 B	157	578	8.0	515/487	350
13	165/70R13	83XL	T	5.0 B	170	562	8.5	487	340
	165/70R13LT	88/86	N	5.0 B	170	562	8.5	560/530	375
14	165/70R14	85XL	T	5.0 J	170	588	8.5	515	340
	175/70R14LT	95/93	S	5.0 B	177	602	8.5	690/650	375

MINI VAN

UHP255



Asymmetric Design

Reduce tyre noise, the different functions at two sides strengthen the performance of tyres on dry and wet land.



3D design is used by the middle tread pattern bar so as to increase the opening area. The steel disc unequally distributed can reduce the inside rigidity and the noise brought by extrusion of tread pattern blocks and promote the controllability of tyres on wet land.



The four horizontal steps equally distributed can effectively decompose the pumping noise source, reduce noise, greatly promote the rigidity between the tread pattern blocks and own good removing effect.

Series	Size	Load Index	Speed Rating	Standard Rim	Section Width (mm)	Overall Diameter (mm)	Tread Depth (mm)	Max. Load (kg)	Max. Pressure (Kpa)
16	205/55ZR16	91	W	6.5 J	214	632	8.2	615	300
	205/50ZR16	87	W	6.5 J	214	612	8.2	545	300
	215/55ZR16	93	W	7.0 J	226	642	8.2	650	300
	225/55ZR16	95	W	7.0 J	233	654	8.2	690	300
	205/45ZR16	83	W	7.0 J	206	590	8.2	487	300
	205/40ZR17	84 XL	W	7.5 J	212	596	8.2	500	340
17	215/40ZR17	87 XL	W	7.5 J	218	604	8.2	545	340
	205/45ZR17	88 XL	W	7.0 J	206	616	8.2	560	340
	215/45ZR17	91 XL	W	7.0 J	213	626	8.2	615	340
	225/45ZR17	94 XL	W	7.5 J	225	634	8.2	670	340
	235/45ZR17	97 XL	W	8.0 J	236	644	8.2	730	340
	205/50ZR17	93 XL	W	6.5 J	214	638	8.2	650	340
	215/50ZR17	95 XL	W	7.0 J	226	648	8.2	690	340
	225/50ZR17	98 XL	W	7.0 J	233	658	8.2	750	340
	225/55ZR17	97	W	7.0 J	233	680	8.2	730	300
	215/35ZR18	84 XL	W	7.5 J	218	607	8.2	500	340
18	225/40ZR18	92 XL	W	8.0 J	230	637	8.2	630	340
	225/45ZR18	95 XL	W	7.5 J	225	659	8.2	690	340
	235/40ZR18	95 XL	W	8.5 J	241	645	8.2	690	340
	235/50ZR18	101 XL	W	7.5 J	245	693	8.2	825	340
	240/40ZR18	97 XL	Y	8.5 J	248	653	8.2	730	340
	245/45ZR18	100 XL	W	8.0 J	243	677	8.2	800	340

SPORTS CAR



RHINO
Build Tough, Drive Safe



GTR602

Series	Size	Load Index	Speed Rating	Standard Rim	Section Width (mm)	Overall Diameter (mm)	Tread Depth (mm)	Max. Load (kg)	Max. Pressure (Kpa)
13	ST175/80R13	6PR	-	5.0 J	177	610	7.5	615	350
14	ST205/75R14	6PR	-	5.5 J	203	664	7.5	800	350
	ST215/75R14	6PR	-	6.0 J	216	678	7.5	850	350
15	ST205/75R15	6PR	-	5.5 J	203	689	7.5	825	350
	ST225/75R15	8PR	-	6.0 J	223	719	8.0	1150	350
16	ST235/80R16	10PR	-	6.5 J	235	782	8.0	1550	550
	ST235/85R16	10PR	-	6.5 J	235	806	8.0	1650	550

TRAILER

VAN455



Three Longitudinal Grooves

The three longitudinal grooves greatly enhance the drainage of tyres on wet land.



Interlaced Tread Pattern Block

The interlaced tread pattern block on tyre shoulder can promote the cross-country performance of tyres.



Series	Size	Load Index	Speed Rating	Standard Rim	Section Width (mm)	Overall Diameter (mm)	Tread Depth (mm)	Max. Load (kg)	Max. Pressure (Kpa)
14	185R14C	102/100	Q	5.5 J	188	650	9.0	850/800	450
	195R14C	106/104	Q	5.5 J	198	666	9.0	950/900	450
	205R14C	109/107	Q	6.0 J	208	686	9.0	1030/975	450
15	195R15C	106/104	Q	5.5 J	198	690	9.0	950/900	450
	195/70R15C	104/102	Q	6.0 J	201	655	9.0	900/850	450
16	225/70R15C	112/110	Q	6.5 J	228	697	9.0	1120/1060	450
	185/75R16C	104/102	Q	5.0 J	184	684	9.0	900/850	450
	195/65R16C	104/102	Q	6.0 J	201	660	9.0	900/850	450
	195/75R16C	107/105	Q	5.5 J	196	698	9.0	975/925	450
	235/65R16C	115/113	Q	7.0 J	240	712	9.0	1215/1150	450

VANS LIGHT TRUCK



RHINO
Build Tough, Drive Safe



LRP168

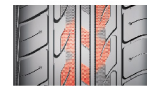
Size	PR	Load Index	Speed Rating	Section Width (mm)	Overall Diameter (mm)	Max. Load Kg (LBS)		Max. Pressure Kpa (PSI)	
						Single	Dural	Single	Dural
6.50R16LT	10	107/102	L	185	750	975(2150)	850(1875)	560(81)	560(81)
7.00R16LT	12	115/110	M	200	775	1215(2679)	1060(2337)	670(97)	670(97)
7.50R16LT	14	122/118	L	215	805	1500(3305)	1320(2910)	770(112)	770(112)

COMFORT355



Streamline Tread Pattern Design

Four grooves, streamline horizontal groove design, promote the driving comfort and high speed performance, reduce tyre noise and increase the riding comfort.



Grid Tread Pattern

The center of tyre crown and high-strength deflection zone of side wall adopt the grid surface treatment, reduce the heat generated by sizing material, and promote the safety of tyres and control safety of new tyres.



Large Tread Pattern Block Design on Shoulder

The super-large pattern block design on shoulder promotes the controllability of tyres. The open horizontal groove can promote the wet skid resistance of tyres.



Step Ventilation Holes

The step ventilation holes on tyre shoulder can promote the safety of tyres, and the half-closed type steel disc can effectively avoid the high noise brought by the common ventilation holes.

Series	Size	Load Index	Speed Rating	Standard Rim	Section Width (mm)	Overall Diameter (mm)	Tread Depth (mm)	Max. Load (kg)	Max. Pressure (Kpa)
14	185/65R14	86	H	5.5 J	188	596	7.5	530	300
	175/65R14	82	H	5.0 J	177	584	7.5	475	300
	185/60R14	82	H	5.5 J	189	578	7.5	475	300
	185/65R15	88	H/V	5.5 J	189	621	7.5	560	300
15	195/65R15	91	H/V	6.0 J	201	635	7.5	615	300
	215/65R15	96	H	6.5 J	221	661	8.0	710	300
	205/65R15	94	H/V	6.0 J	209	647	7.5	670	300
	195/55R15	85	H/V	6.0 J	201	595	7.5	515	300
	195/60R15	88	H/V	6.0 J	201	615	7.5	560	300
	185/60R15	84	H/V	5.5 J	189	603	7.5	500	300
	205/60R15	91	H/V	6.0 J	209	627	8.0	615	300
16	215/65R16	98	H	6.5 J	221	686	8.0	750	300
	205/60R16	92	H/V	6.0 J	209	652	8.0	630	300
	215/60R16	95	H/V	6.5 J	221	664	8.0	690	300
	225/60R16	98	H/V	6.5 J	228	676	8.0	750	300
	235/60R16	100	H	7.0 J	240	688	8.0	800	300
	205/55R16	91	H/V	6.0 J	209	632	7.5	615	300
17	215/55R17	94	H/V	7.0 J	226	668	8.0	670	300

COMFORTABLE CAR



RHINO
Build Tough, Drive Safe

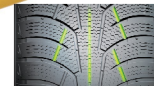


GTR801

Series	Size	Load Index	Speed Rating	Standard Rim	Section Width (mm)	Overall Diameter (mm)	Tread Depth (mm)	Max. Load (kg)	Max. Pressure (Kpa)
15	195/65R15	91	T	6.0 J	201	635	9.5	615	300
	205/55R16	94 XL	T	6.5 J	214	632	9.5	670	340
16	205/60R16	92	T	6.0 J	209	652	9.5	630	300
	215/60R16	95	T	6.5 J	221	664	9.5	690	300
17	225/45R17	94 XL	T	7.5 J	225	634	9.5	670	340
	235/45R17	97 XL	T	8.0 J	236	644	9.5	730	340
18	235/40R18	95 XL	T	8.5 J	241	645	9.0	690	340

SNOW TYRE

SNOWFORCE



More Silica Compound provides best grip power on wet ground and less rolling resistance.



V groove design provides best water drainage performance.



Perfect braking on snow road conditions based on big tread pattern design.



Series	Size	Load Index	Speed Rating	Standard Rim	Section Width (mm)	Overall Diameter (mm)	Tread Depth (mm)	Max. Load (kg)	Max. Pressure (Kpa)
13	155/65R13	73	T	4.5 B	157	532	8.5	365	300
	155/70R13	75	T	4.5 B	157	548	8.5	387	300
	165/70R13	83 XL	T	5.0 B	170	562	8.5	487	340
	175/70R13	82	T	5.0 B	177	576	8.5	475	300
14	165/65R14	79	T	5.0 J	170	570	8.5	437	300
	165/70R14	85 XL	T	5.0 J	170	588	8.5	515	340
	175/65R14	82	H	5.0 J	177	584	8.7	475	300
	175/70R14	88 XL	T	5.0 J	177	602	8.5	560	340
	185/60R14	82	T	5.5 J	189	578	8.5	475	300
	185/65R14	86	T	5.5 J	188	596	8.7	530	300
	185/70R14	92 XL	T	5.5 J	189	616	8.7	630	340
	195/60R14	86	T	6.0 J	201	590	8.5	530	300
	195/70R14	91	H	6.0 J	201	630	8.7	615	300
	175/65R15	84	H	5.0 J	177	609	8.5	500	300
15	185/55R15	86 XL	H	6.0 J	194	585	8.5	530	300
	185/60R15	88 XL	H	5.5 J	189	603	8.5	560	340
	185/65R15	88	T	5.5 J	189	621	8.7	560	300
	195/50R15	86 XL	H	6.0 J	201	577	8.7	530	340
	195/55R15	85	H	6.0 J	201	595	8.5	515	300
	195/60R15	88	T	6.0 J	201	615	8.7	560	300
	195/65R15	95 XL	T	6.0 J	201	635	8.7	690	340
	195/65R15	91	T	6.0 J	201	635	8.7	615	300
205/60R15	91	H	6.0 J	209	627	8.7	615	300	
	205/65R15	94	H	6.0 J	209	647	8.5	670	300

SNOW TYRE



RHINO
Build Tough, Drive Safe



GTR101



Special compound improves driving and gripping performance while keeping excellent heat-resistant and anti-wear ability.

Asymmetric pattern design reduce the noise when running.



High strength steel belt reduce rolling resistance. Offering more fuel saving and environmental while keeping the driving safely.

Series	Size	Load Index	Speed Rating	Standard Rim	Section Width (mm)	Overall Diameter (mm)	Tread Depth (mm)	Max. Load (kg)	Max. Pressure (Kpa)
15	215/75R15	100	S	6.0 J	216	703	9.5	800	300
	225/70R15	100	S	6.5 J	228	697	9.0	800	300
	225/75R15	102	S	6.0 J	223	719	9.5	850	300
	235/75R15	105	S	6.5 J	235	733	9.5	925	300
16	215/65R16	98	T	6.5 J	221	686	9.0	750	340

UHP TYRE

EMOTION



Series	Size	Load Index	Speed Rating	Standard Rim	Section Width (mm)	Overall Diameter (mm)	Tread Depth (mm)	Max. Load (kg)	Max. Pressure (Kpa)
16	205/55R16	89	V/W	6.5 J	214	632	8	580	300
	215/55R16	91	V/W	7.0 J	226	642	8	615	300
17	205/50R17	88	V/W	6.5 J	214	638	8	560	300
	215/45R17	87	V/W	7.0 J	213	626	8	545	300
	215/55R17	93	V/W	7.0 J	266	668	8	650	300
	225/45R17	90	V/W	7.5 J	225	634	8	600	300
	225/50R47	93	V/W	7.0 J	233	658	8	650	300
	225/55R17	95	V/W	7.0 J	233	680	8	690	300
	235/45R17	93	V/W	8.0 J	236	644	8	650	300
18	235/55R17	98	H	7.5 J	245	690	8	750	300
	225/40R18	88	V/W	8.0 J	230	637	8	560	300
	225/45R18	91	V/W	7.5 J	225	659	8	615	300
	235/40R18	91	V/W	8.5 J	241	645	8	615	300
	245/40R18	93	V/W	8.5 J	248	653	8	650	300
	245/45R18	96	V/W	8.0 J	243	677	8	710	300
19	255/55R18	104	H	8.0 J	265	737	8	900	300
	235/35R19	87	V/W	8.5 J	241	647	8	545	300
	245/35R19	89	V/W	8.5 J	248	655	8	580	300
20	245/35R20	91	V/W	8.5 J	248	680	8	615	300

UHP TYRE



RHINO
Build Tough, Drive Safe



PT28

Size	Load Index & Speed Rating	STD. RIM INCH	Section Width (mm)	Overall Diameter (mm)	Max Load KG	Max Load LBS	Max Pressure KPA	Max Pressure PSI
155R13C	85/83R	4.5	157	578	515/487		350	
550R13C 8PR	88/84P							
185R14C	102/100R	5.5 J	188	650	850/800	1875/1765	450	65
195R14C	106/104R	5.5 J	198	666	950/900	2095/1985	450	65
185R15C	103/102R	5.5 J	188	674	875/850	1930/1875	450	65
195R15C	106/104R	5.5 J	198	693	950/900	2095/1985	450	65

WHITE SIDE WALL TYRE



GP1000

Series	Size	Load Index	Speed Rating	Standard Rim	Section Width (mm)	Overall Diameter (mm)	Tread Depth (mm)	Max. Load (kg)	Max. Pressure (Kpa)	
15	LT31*10.5R15	109	Q	8.5 J	268	775	10.0	1030	350	
	LT215/75R16	115/112	Q	6.0 J	223	744	10.0	1215/1120	550	
	LT215/85R16	115/112	Q	6.0 J	216	772	10.0	1215/1120	550	
16	LT235/85R16	120/116	Q	6.5 J	235	806	10.0	1380/1260	550	
	LT245/75R16	120/116	Q	7.0 J	248	774	10.0	1380/1260	550	
	LT265/75R16	123/120	Q	7.5 J	267	804	10.0	1500/1400	550	
	LT235/80R17	120/117	Q	6.5 J	235	808	10.0	1400/1285	550	
	LT245/70R17	119/116	Q	7.0 J	248	776	10.0	1360/1250	550	
17	LT245/75R17	121/118	Q	7.0 J	248	800	10.0	1450/1320	550	
	LT265/70R17	121/118	Q	8.0 J	272	804	10.0	1450/1320	550	
	P215/70R16	99	H	6.5 J	221	708	9.0	775	300	
	P225/70R16	101	H	6.5 J	228	722	9.0	825	300	
	P225/75R16	104	H	6.0 J	223	744	9.0	900	300	
	P235/70R16	104	H	7.0 J	240	736	9.0	900	300	
	16	P235/75R16	106	H	6.5 J	235	758	9.0	950	300
		P245/70R16	106	H	7.0 J	248	750	9.0	950	300
		P255/65R16	106	H	7.5 J	260	738	9.0	950	300
		P255/70R16	109	H	7.5 J	260	764	9.0	1030	300
17	P266/70R16	111	H	8.0 J	272	778	9.0	1090	300	
	P225/65R17	100	H	6.5 J	228	724	9.0	800	300	
	P235/60R17	100	H	7.0 J	240	714	9.0	800	300	
	P235/65R17	103	H	7.0 J	240	738	9.0	875	300	
	P245/65R17	105	H	7.0 J	248	750	9.0	925	300	
	P265/65R17	110	H	8.0 J	272	776	9.0	1060	300	
	P265/70R17	113	H	8.0 J	272	804	9.0	1150	300	
18	P235/60R18	102	H	7.0 J	240	739	9.0	850	300	
	P235/65R18	104	H	7.0 J	240	763	9.0	900	300	



RHINO
Build Tough, Drive Safe



POWERMAX

Size	Load index & Speed Rating	STD. RIM INCH	Section Width (mm)	Overall Diameter (mm)	Max Load		Max Pressure	
					KG	LBS	KPA	PSI
P185/75R14	89S/89T	5.0	184	634	585	1290	300	44
P195/75R14	92S/92T	5.0	196	648	635	1400	300	44
P205/75R14	95S/95T	5.5J	203	664	695	1532	300	44
P205/75R15	98S/98T	5.5J	203	689	725	1598	300	44
P215/75R15	100T	6.0J	216	703	790	1742	300	44
P225/75R15	102S/102T	6.0 J	223	719	850	1874	300	44
P235/75R15	105S	6.5 J	235	733	920	2028	300	44

WHITE SIDE WALL TYRE

Load Index	KG	LBS
70	335	739
71	345	761
72	355	783
73	365	805
74	375	827
75	387	853
76	400	882
77	412	908
78	425	937
79	437	963
80	450	992
81	462	1019
82	475	1047
83	487	1074
84	500	1102
85	515	1135
86	530	1168
87	545	1202
88	560	1235
89	580	1279
90	600	1323

Load Index	KG	LBS
91	615	1356
92	630	1389
93	650	1433
94	670	1477
95	690	1521
96	710	1565
97	730	1609
98	750	1653
99	775	1709
100	800	1764
101	825	1819
102	850	1874
103	875	1929
104	900	1984
105	925	2039
106	950	2094
107	975	2149
108	1000	2205
109	1030	2271
110	1060	2337

Load Index	KG	LBS
111	1090	2403
112	1120	2469
113	1150	2535
114	1180	2601
115	1215	2679
116	1250	2756
117	1285	2833
118	1320	2910
119	1360	2998
120	1400	3086
121	1450	3197
122	1500	3307
123	1550	3417
124	1600	3527
125	1650	3638
126	1700	3748
127	1750	3858
128	1800	3968
129	1850	4079
130	1900	4189

NO.	Speed Symbol	Maximum Speed(km/hr)
1	Q	160
2	R	170
3	S	180
4	T	190
5	H	210
6	V	240
7	W	270
8	Y	300
-	ZR	240 & above