

**LANDSAIL**

**SPIRIT OF DRIVING**

**2014 TIRE CATALOG**

[LandsailTires.com](http://LandsailTires.com)



**SENTURY TIRE**  
Americas



**RFT**  
Run Flat  
Tires  
**4-5**



**LS288**  
Passenger  
Touring Tire  
**6-7**



**LS388**  
Performance  
Touring Tire  
**8-9**



**LS588 UHP**  
All Season Ultra High  
Performance Tire  
**10-11**



**LS988**  
Ultra High  
Performance Tire  
**12-13**



**CLV1**  
All Season  
Sport Utility Tire  
**14-15**



**CLV2**  
All Season Highway  
Crossover & Sport Utility Tire  
**16-17**



**LS588 suv/cuv**  
All Season Performance  
Crossover & Sport Utility Tire  
**18-19**



**WINTER LANDER**  
Passenger Snow  
& Ice Tire  
**20-21**



**WINTER STAR**  
Crossover and Sport Utility  
Snow & Ice Tire  
**22-23**



**SNOW STAR**  
Commercial Van Snow  
& Ice Tire  
**24-25**



**LSV88**  
Commercial  
Van Tire  
**26-27**

**LANDSAIL TIRES: ENGINEERED FOR EXCELLENCE**

Sophisticated tread design. Advanced compounding. Steel-belted strength and endurance. They're all front and center in the Landsail line of passenger, light truck and SUV/CUV tires. Engineered and produced under the leadership of a European technology team, Landsail tires are setting new benchmarks for quality and value ... and turning the heads of discriminating drivers all over the world.

2 LANDSAILTIRES.COM

3 1-305-621-5101



# RFT

Run Flat Tires

**Landsail Run Flat Tires (RFT) are now available in our most popular passenger performance tires – the LS388, LS588 and LS988.**



These self-supporting run-flat tires have been developed for drivers of performance vehicles and SUVs looking for the extra element of safety and convenience. Built for vehicles equipped with TPMS (Tire Pressure Monitoring Systems), Landsail RFT tires feature reinforced sidewalls along with wider tire beads manufactured with a low temperature rubber compound.



**LS388 RFT** Run Flat Tire

Series	Size	LI SI	Approved Rim	Tread Depth		Overall Diameter		Section Width		Max. Load		Max. Pressure		Revs Per Mile	UTQG
				1/32"	mm	inch	mm	inch	mm	lbs	kg	psi	kPa		
55	205/55ZR16	91 W	5.5- <b>6.5</b> -7.5	9.8	7.8	24.9	632	8.4	214	1356	615	44	300	835	500/A/A
	195/55ZR16	91 W XL	5.0- <b>6.0</b> -7.0	9.8	7.8	24.4	620	7.9	201	1356	615	49	340	851	500/A/A



**LS588 RFT** Run Flat Tire

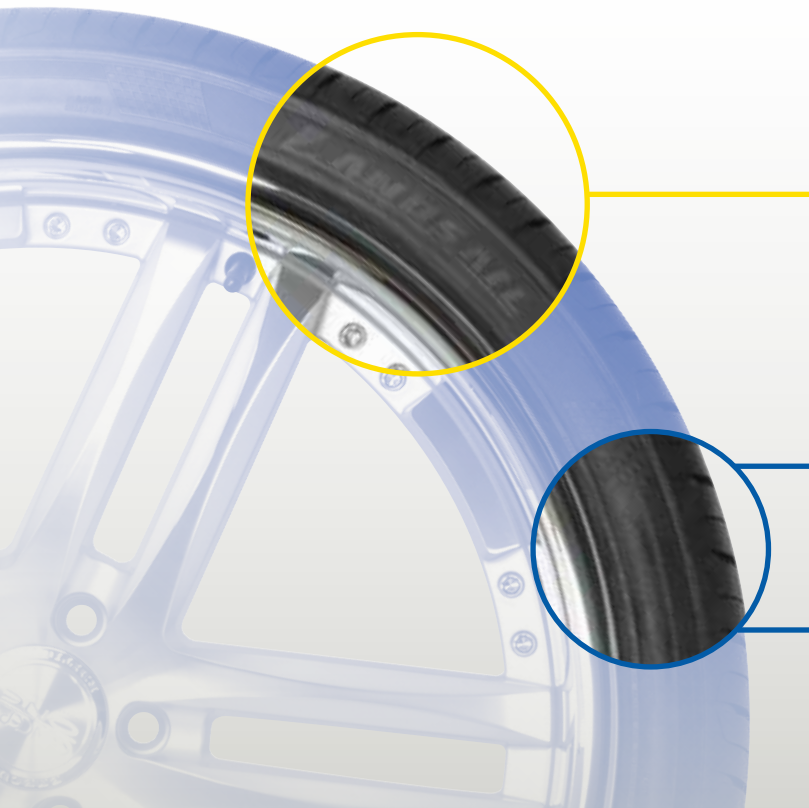
Series	Size	LI SI	Approved Rim	Tread Depth		Overall Diameter		Section Width		Max. Load		Max. Pressure		Revs Per Mile	UTQG
				1/32"	mm	inch	mm	inch	mm	lbs	kg	psi	kPa		
35	315/35R20	110 V XL	10.5- <b>11.0</b> -12.5	10.2	8.1	28.7	728	12.6	320	2337	1060	49	340	725	500/A/A
40	275/40R20	110 V XL	9.0- <b>9.5</b> -11.0	10.2	8.1	28.7	728	10.9	278	2337	1060	49	340	725	500/A/A



**LS988 RFT** Run Flat Tire

Series	Size	LI SI	Approved Rim	Tread Depth		Overall Diameter		Section Width		Max. Load		Max. Pressure		Revs Per Mile	UTQG
				1/32"	mm	inch	mm	inch	mm	lbs	kg	psi	kPa		
35	255/35ZR18	94 W XL	8.5- <b>9.0</b> -10.0	9.8	7.8	25.0	635	10.2	260	1477	670	49	340	831	420/A/A
	225/40ZR18	92 W XL	7.5- <b>8.0</b> -9.0	9.8	7.8	25.1	637	9.1	230	1389	630	49	340	828	420/A/A
45	245/40ZR18	97 W XL	8.0- <b>8.5</b> -9.5	9.8	7.8	25.7	653	9.8	248	1609	730	49	340	808	420/A/A
	205/45ZR17	88 W XL	6.5- <b>7.0</b> -7.5	9.8	7.8	24.3	616	8.1	206	1235	560	49	340	856	420/A/A
	225/45ZR17	94 W XL	7.0- <b>7.5</b> -8.5	9.8	7.8	25.0	634	8.9	225	1477	670	49	340	832	420/A/A
50	245/45ZR18	100 Y XL	7.5- <b>8.0</b> -9.0	9.8	7.8	26.7	677	9.6	243	1764	800	49	340	779	420/A/A
	245/50ZR18	100 W	7.0- <b>7.5</b> -8.5	9.8	7.8	27.7	703	10.0	253	1764	800	44	300	750	500/A/A
	205/50ZR17	93 W XL	5.5- <b>6.5</b> -7.5	9.8	7.8	25.1	638	8.4	214	1433	650	49	340	827	420/A/A
	225/50ZR17	98 W XL	6.0- <b>7.0</b> -8.0	9.8	7.8	25.9	658	9.2	233	1653	750	49	340	802	420/A/A
55	225/55ZR17	101 W XL	6.0- <b>7.0</b> -8.0	9.8	7.8	26.8	680	9.2	233	1819	825	49	340	776	420/A/A

Bold designates measuring rim width. This data can be changed by manufacturer without prior notice.



**REINFORCED SIDEWALL.** The RFT advanced rubber compound and tire cord is stronger than a regular tire sidewall, enabling it to support the weight of the vehicle without air. Though a sudden deflation results in less weight transfer and tread destabilization, these features help retain control of steering and normalize handling.

**HEAT-RESISTANT TIRE BEAD COMPOUND.** The RFT tire compound resists heat build-up under zero pressure driving conditions enabling you to drive an extended distance until the tire is replaced.

**WIDE TIRE BEAD.** A wide RFT tire bead firmly holds the tire in place on the wheel flange preventing tire bead separation from the wheel.



# LS288

Passenger Touring Tire

## Engineered for a quiet ride and superior traction.

The Landsail LS288 maximizes the pleasures of the road by emphasizing a quiet ride and sure-footed stability, even when the road is wet. It gets you there — in your car or minivan — in comfort and style.



**WET GRIP GROOVE DESIGN.** Four wide longitudinal grooves channel road water, while lateral grooves work to direct it out from under the tire.

**SILENT LATERAL GROOVES.** By connecting the tire void areas, these little beauties effectively reduce the “pumping” noise tires can make at highway speeds.

**QUIET-RIDE PITCH ALIGNMENT.** Optimized tread pitch width and alignment quiet resonance and the road noise it creates.

**STRAIGHT-LINE DRIVING STABILITY.** Three continuous circumferential ribs provide excellent highway stability. The small lateral grooves in the center rib improve high-speed performance.

**HEAT RELEASING GROOVES.** The design provides a clear channel for heat to dissipate outwards from the center of the tire. Less heat means longer wear. The straight-line bar just inside the shoulder also resists irregular tread wear.

## LS288 Passenger Touring Tire

Series	Size	LI SI	Approved Rim	Tread Depth		Overall Diameter		Section Width		Max. Load		Max. Pressure		Revs Per	
				1/32"	mm	inch	mm	inch	mm	lbs	kg	psi	kPa	Mile	UTQG
45	195/45R16	84 V XL	6.0- <b>6.5</b> -7.5	9.8	7.8	22.9	582	7.7	195	1102	500	49	340	906	500/A/A
	205/45ZR16	87 W XL	6.5- <b>7.0</b> -7.5	9.8	7.8	23.2	590	8.1	206	1201	545	49	340	894	500/A/A
50	195/50R15	82 V	5.5- <b>6.0</b> -7.0	9.8	7.8	22.7	577	7.9	201	1047	475	44	300	914	500/A/A
	195/50R16	84 V	5.5- <b>6.0</b> -7.0	9.8	7.8	23.7	602	7.9	201	1102	500	44	300	876	500/A/A
	205/50ZR16	87 W	5.5- <b>6.5</b> -7.5	9.8	7.8	24.1	612	8.4	214	1201	545	44	300	862	500/A/A
55	185/55R15	82 V	5.0- <b>6.0</b> -6.5	9.8	7.8	23.0	585	7.7	195	1047	475	44	300	902	500/A/A
	195/55R15	85 V	5.5- <b>6.0</b> -7.0	9.8	7.8	23.4	595	7.9	201	1135	515	44	300	887	500/A/A
	185/55R16	83 V	5.0- <b>6.0</b> -6.5	9.6	7.6	24.0	610	7.6	194	1074	487	44	300	865	500/A/A
	195/55R16	87 H/V	5.5- <b>6.0</b> -7.0	9.8	7.8	24.4	620	7.9	201	1201	545	44	300	851	500/A/A
	205/55ZR16	91 W	5.5- <b>6.5</b> -7.5	9.8	7.8	24.9	632	8.4	214	1356	615	44	300	835	500/A/A
	215/55ZR16	97 W XL	6.0- <b>7.0</b> -7.5	9.8	7.8	25.3	642	8.9	226	1609	730	49	340	822	500/A/A
	225/55ZR16	99 W XL	6.0- <b>7.0</b> -8.0	9.8	7.8	25.7	654	9.2	233	1709	775	49	340	807	500/A/A
60	175/60R14	79 H/T	<b>5.0</b> -5.5-6.0	9.6	7.6	22.3	566	7.0	177	963	437	44	300	932	500/A/A
	185/60R14	82 H	5.0- <b>5.5</b> -6.5	9.6	7.6	22.8	578	7.4	189	1047	475	44	300	913	500/A/A
	195/60R14	86 H	5.5- <b>6.0</b> -7.0	9.8	7.8	23.2	590	7.9	201	1168	530	44	300	894	500/A/A
	185/60R15	84 H	5.0- <b>5.5</b> -6.5	9.6	7.6	23.7	603	7.4	189	1102	500	44	300	875	500/A/A
	195/60R15	88 H/V	5.5- <b>6.0</b> -7.0	9.8	7.8	24.2	615	7.9	201	1235	560	44	300	858	500/A/A
	205/60R15	91 V	5.5- <b>6.0</b> -7.5	9.8	7.8	24.7	627	8.2	209	1356	615	44	300	841	500/A/A
	205/60R16	92 H/V	5.5- <b>6.0</b> -7.5	9.8	7.8	25.7	652	8.2	209	1389	630	44	300	809	500/A/A
	215/60R16	95 H/V	6.0- <b>6.5</b> -7.5	10.2	8.1	26.1	664	8.7	221	1521	690	44	300	794	500/A/A
	225/60R16	98 H	6.0- <b>6.5</b> -8.0	10.2	8.1	26.6	676	9.0	228	1653	750	44	300	780	500/A/A
	65	165/65R14	79 H/T	4.5- <b>5.0</b> -6.0	9.6	7.6	22.4	570	6.7	170	963	437	44	300	926
175/65R14		82 H/T	<b>5.0</b> -5.5-6.0	9.6	7.6	23.0	584	7.0	177	1047	475	44	300	903	500/A/A
175/65R14		86 T XL	<b>5.0</b> -5.5-6.0	9.6	7.6	23.0	584	7.0	177	1168	530	49	340	903	500/A/A
185/65R14		86 H/T	5.0- <b>5.5</b> -6.5	9.6	7.6	23.5	596	7.4	189	1168	530	44	300	885	500/A/A
175/65R15		84 H	<b>5.0</b> -5.5-6.0	9.6	7.6	24.0	609	7.0	177	1102	500	44	300	866	500/A/A
185/65R15		88 H/T	5.0- <b>5.5</b> -6.5	9.6	7.6	24.4	621	7.4	189	1235	560	44	300	850	500/A/A
195/65R15		91 H/V	5.5- <b>6.0</b> -7.0	9.8	7.8	25.0	635	7.9	201	1356	615	44	300	831	500/A/A
205/65R15		94 H	5.5- <b>6.0</b> -7.5	9.8	7.8	25.5	647	8.2	209	1477	670	44	300	815	500/A/A
215/65R16		98 H	6.0- <b>6.5</b> -7.5	9.8	7.8	27.0	686	8.7	221	1653	750	44	300	769	500/A/A
70		165/70R13	79 H/T	4.0- <b>5.0</b> -5.5	9.6	7.6	22.1	562	6.7	170	963	437	44	300	939
	175/70R13	82 H/T	4.5- <b>5.0</b> -6.0	9.6	7.6	22.7	576	7.0	177	1047	475	44	300	916	500/A/A
	165/70R14	81 H/T	4.0- <b>5.0</b> -5.5	9.6	7.6	23.1	588	6.7	170	1019	462	44	300	897	500/A/A
	195/70R14	91 H	5.0- <b>6.0</b> -6.5	9.8	7.8	24.8	630	7.9	201	1356	615	44	300	837	500/A/A
	205/70R14	98 H XL	5.0- <b>6.0</b> -7.0	9.8	7.8	25.4	644	8.2	209	1653	750	49	340	819	500/A/A
	215/70R15	98 H/T	5.5- <b>6.5</b> -7.0	10.2	8.1	26.9	683	8.7	221	1653	750	44	300	772	500/A/A
75	215/75R15	100 H/T	5.5- <b>6.0</b> -7.0	10.2	8.1	27.6	700	8.5	216	1764	800	44	300	754	500/A/A



# LS388

Performance Touring Tire

Everything you want in a touring tire, and less – fuel consumption.

The LS388's advanced compounding is formulated to help you save fuel with every mile you travel, while the tread design works to keep you stable and comfortable as the miles pile up.



**FUEL SAVING TREAD COMPOUND.** The LS388's advanced tread compound reduces rolling resistance, which helps boost your vehicle's fuel efficiency. And when you do that, you reduce exhaust emissions, too. You help save the environment while you save energy dollars.

**WET GRIP GROOVE DESIGN.** Four wide longitudinal grooves channel road water, while lateral grooves work to direct it out from under the tire.

**HIGH STABILITY CENTERING RIB.** The solid rib in the center of the tire ensures straight-line driving stability.

**LOW TREAD WEAR SHOULDER DESIGN.** The shoulder is integrated with heat-resisting bars to keep the tread blocks stable and protect them from irregular wear. For the same reason, the design also improves high-speed cornering stability.

**QUIET-RIDE PITCH ALIGNMENT.** Optimized tread pitch width and alignment quiet resonance and the road noise it creates.

LS388 Performance Touring Tire

Series	Size	LI SI	Approved Rim	Tread Depth		Overall Diameter		Section Width		Max. Load		Max. Pressure		Revs Per Mile	UTQG	
				1/32"	mm	inch	mm	inch	mm	lbs	kg	psi	kPa			
40	195/40ZR17	81 W XL	6.5- <b>7.0</b> -7.5	9.8	7.8	23.1	588	7.9	200	1019	462	49	340	897	500/A/A	
	45	185/45R15	75 V	<b>6.0</b> -6.5-7.0	9.8	7.8	21.5	547	7.2	183	853	387	44	300	964	500/A/A
		195/45R15	78 V	6.0- <b>6.5</b> -7.5	9.8	7.8	21.9	557	7.7	195	937	425	44	300	947	500/A/A
		205/45ZR17	88 W XL	6.5- <b>7.0</b> -7.5	9.8	7.8	24.3	616	8.1	206	1235	560	49	340	856	500/A/A
		225/45ZR18	95 W XL	7.0- <b>7.5</b> -8.5	9.8	7.8	25.9	659	8.9	225	1521	690	49	340	801	500/A/A
		235/45ZR18	98 W XL	7.5- <b>8.0</b> -9.0	9.8	7.8	26.3	669	9.3	236	1653	750	49	340	789	500/A/A
245/45ZR18	100 W XL	7.5- <b>8.0</b> -9.0	9.8	7.8	26.7	677	9.6	243	1764	800	49	340	779	500/A/A		
50	195/50R15	82 V	5.5- <b>6.0</b> -7.0	9.8	7.8	22.7	577	7.9	201	1047	475	44	300	914	500/A/A	
	195/50R16	84 H/V	5.5- <b>6.0</b> -7.0	9.8	7.8	23.7	602	7.9	201	1102	500	44	300	876	500/A/A	
	205/50ZR16	87 W	5.5- <b>6.5</b> -7.5	9.8	7.8	24.1	612	8.4	214	1201	545	44	300	862	500/A/A	
	205/50ZR17	93 W XL	5.5- <b>6.5</b> -7.5	9.8	7.8	25.1	638	8.4	214	1433	650	49	340	827	500/A/A	
	215/50ZR17	95 W XL	6.0- <b>7.0</b> -7.5	9.8	7.8	25.5	648	8.9	226	1521	690	49	340	814	500/A/A	
	225/50ZR17	98 W XL	6.0- <b>7.0</b> -8.0	9.8	7.8	25.9	658	9.2	233	1653	750	49	340	802	500/A/A	
	225/50ZR18	99 W XL	6.0- <b>7.0</b> -8.0	9.8	7.8	26.9	683	9.2	233	1709	775	49	340	772	500/A/A	
55	185/55R14	80 H	5.0- <b>6.0</b> -6.5	9.6	7.6	22.0	560	7.6	194	992	450	44	300	942	500/A/A	
	195/55R15	85 V	5.5- <b>6.0</b> -7.0	9.8	7.8	23.4	595	7.9	201	1135	515	44	300	887	500/A/A	
	195/55ZR16	91 W XL	5.0- <b>6.0</b> -7.0	9.8	7.8	24.4	620	7.9	201	1356	615	49	340	851	500/A/A	
	205/55ZR16	91 W	5.5- <b>6.5</b> -7.5	9.8	7.8	24.9	632	8.4	214	1356	615	44	300	835	500/A/A	
	205/55ZR16	94 W XL	5.5- <b>6.5</b> -7.5	9.8	7.8	24.9	632	8.4	214	1477	670	49	340	835	500/A/A	
	215/55ZR16	97 W XL	6.0- <b>7.0</b> -7.5	9.8	7.8	25.3	642	8.9	226	1609	730	49	340	822	500/A/A	
	225/55ZR16	99 W XL	6.0- <b>7.0</b> -8.0	9.8	7.8	25.7	654	9.2	233	1709	775	49	340	807	500/A/A	
	215/55ZR17	98 W XL	6.0- <b>7.0</b> -7.5	9.8	7.8	26.3	668	8.9	226	1653	750	49	340	790	500/A/A	
	225/55ZR17	101 W XL	6.0- <b>7.0</b> -8.0	9.8	7.8	26.8	680	9.2	233	1819	825	49	340	776	500/A/A	
	235/55ZR17	103 W XL	6.5- <b>7.5</b> -8.5	10.2	8.1	27.2	690	9.6	245	1929	875	49	340	765	500/A/A	
	225/55ZR18	102 W XL	6.0- <b>7.0</b> -8.0	9.8	7.8	27.8	705	9.2	233	1874	850	49	340	748	500/A/A	
60	165/60R14	75 T/H	4.5- <b>5.0</b> -6.0	9.6	7.6	21.8	554	6.7	170	853	387	44	300	952	500/A/A	
	185/60R14	82 H	5.0- <b>5.5</b> -6.5	9.6	7.6	22.8	578	7.4	189	1047	475	44	300	913	500/A/A	
	195/60R14	86 H	5.5- <b>6.0</b> -7.0	9.8	7.8	23.2	590	7.9	201	1168	530	44	300	894	500/A/A	
	175/60R15	81 H	<b>5.0</b> -5.5-6.0	9.6	7.6	23.3	591	7.0	177	1019	462	44	300	893	500/A/A	
	185/60R15	84 H	5.0- <b>5.5</b> -6.5	9.6	7.6	23.7	603	7.4	189	1102	500	44	300	875	500/A/A	
	195/60R15	88 H/V	5.5- <b>6.0</b> -7.0	9.8	7.8	24.2	615	7.9	201	1235	560	44	300	858	500/A/A	
	205/60R15	91 V	5.5- <b>6.0</b> -7.5	9.8	7.8	24.7	627	8.2	209	1356	615	44	300	841	500/A/A	
	205/60R16	92 H/V	5.5- <b>6.0</b> -7.5	9.8	7.8	25.7	652	8.2	209	1389	630	44	300	809	500/A/A	
	215/60R16	95 H/V	6.0- <b>6.5</b> -7.5	10.2	8.1	26.1	664	8.7	221	1521	690	44	300	794	500/A/A	
	225/60R16	98 H	6.0- <b>6.5</b> -8.0	10.2	8.1	26.6	676	9.0	228	1653	750	44	300	780	500/A/A	
	215/60R17	100 H/V XL	6.0- <b>6.5</b> -7.5	9.8	7.8	27.2	690	8.7	221	1764	800	49	340	765	500/A/A	
	225/60R18	104 V XL	6.0- <b>6.5</b> -8.0	9.8	7.8	28.6	727	9.0	228	1984	900	49	340	726	500/A/A	
	65	155/65R13	73 T	<b>4.5</b> -5.0-5.5	9.6	7.6	20.9	532	6.2	157	805	365	44	300	992	500/A/A
155/65R14		75 T	<b>4.5</b> -5.0-5.5	9.6	7.6	22.0	558	6.2	157	853	387	44	300	945	500/A/A	
165/65R13		77 T/H	4.5- <b>5.0</b> -6.0	9.6	7.6	21.4	544	6.7	170	908	412	44	300	970	500/A/A	
165/65R14		79 T/H	4.5- <b>5.0</b> -6.0	9.6	7.6	22.4	570	6.7	170	963	437	44	300	926	500/A/A	
175/65R14		82 T/H	<b>5.0</b> -5.5-6.0	9.6	7.6	23.0	584	7.0	177	1047	475	44	300	903	500/A/A	
185/65R14		86 H/T	5.0- <b>5.5</b> -6.5	9.6	7.6	23.5	596	7.4	189	1168	530	44	300	885	500/A/A	
175/65R15		84 T/H	<b>5.0</b> -5.5-6.0	9.4	7.5	24.0	609	7.0	177	1102	500	44	300	866	500/A/A	
185/65R15		88 T/H	5.0- <b>5.5</b> -6.5	9.6	7.6	24.4	621	7.4	189	1235	560	44	300	850	500/A/A	
195/65R15		91 H/V	5.5- <b>6.0</b> -7.0	9.8	7.8	25.0	635	7.9	201	1356	615	44	300	831	500/A/A	
205/65R15		94 H	5.5- <b>6.0</b> -7.5	9.8	7.8	25.5	647	8.2	209	1477	670	44	300	815	500/A/A	
205/65R16		95 V	5.5- <b>6.0</b> -7.5	9.8	7.8	26.5	672	8.2	209	1521	690	44	300	785	500/A/A	
215/65R16		98 H	6.0- <b>6.5</b> -7.5	9.8	7.8	27.0	686	8.7	221	1653	750	44	300	769	500/A/A	
70	145/70R13	71 T	3.5- <b>4.5</b> -5.0	9.6	7.6	21.0	534	5.9	150	761	345	44	300	988	500/A/A	
	155/70R13	75 T	4.0- <b>4.5</b> -5.0	9.6	7.6	21.6	548	6.2	157	853	387	44	300	963	500/A/A	
	165/70R13	79 T/H	4.0- <b>5.0</b> -5.5	9.6	7.6	22.1	562	6.7	170	963	437	44	300	939	500/A/A	
	175/70R13	82 T/H	4.0- <b>5.0</b> -6.0	9.6	7.6	22.7	576	7.0	177	1047	475	44	300	916	500/A/A	
	205/70R13	91 H/T	5.5- <b>6.0</b> -6.5	9.8	7.8	24.1	612	8.7	220	1356	615	44	300	862	500/A/A	
	165/70R14	81 T/H	4.0- <b>5.0</b> -5.5	9.6	7.6	23.1	588	6.7	170	1019	462	44	300	897	500/A/A	
175/70R14	88 T/H XL	4.5- <b>5.0</b> -6.0	9.6	7.6	23.7	602	7.0	177	1235	560	49	340	876	500/A/A		
215/70R15	98 H	5.5- <b>6.5</b> -7.0	10.2	8.1	26.9	683	8.7	221	1653	750	44	300	772	500/A/A		
80	155/80R13	79 T	4.0- <b>4.5</b> -5.0	9.6	7.6	22.8	578	6.2	157	963	437	44	300	913	500/A/A	



# LS588 UHP

All Season Ultra High Performance Tire

## A Blend of Performance and Comfort in an All-Season Ultra High Performance Tire.

You can have it all with this fuel-saving tire. Low road noise, smooth ride, wet road hydroplaning resistance and dry road handling.



**QUIETER RIDE.** Optimized tread pitch width and alignment reduces road noise levels at higher speeds.

**SMOOTH HANDLING.** Lateral and longitudinal grooves deliver more control.

**WET TRACTION.** Additional sipes and grooves improve hydroplaning resistance.

**DRY HANDLING.** A larger tire contact area allows grip, stability and control.

**SILICA COMPOUND.** Our advanced tread compound reduces rolling resistance, helping boost fuel efficiency.

**COMPUTER-AIDED-DESIGN (CAD).** The Future of Tire Technology is here with a tire designed to perform and look great!

## LS588 UHP All Season Ultra High Performance Tire

Series	Size	LI SI	Approved Rim	Tread Depth		Overall Diameter		Section Width		Max. Load		Max. Pressure		Revs Per Mile	UTQG	
				1/32"	mm	inch	mm	inch	mm	lbs	kg	psi	kPa			
25	285/25ZR20	93 W XL	<b>10.5</b>	10.2	8.1	25.6	650	11.6	295	1433	650	49	340	812	500/A/A	
	285/25ZR22	99 W XL	<b>10.5</b>	10.2	8.1	27.6	701	11.6	295	1709	775	49	340	753	500/A/A	
30	255/30ZR19	91 Y XL	8.5- <b>9.0</b> -9.5	9.8	7.8	25.1	637	10.2	260	1356	615	49	340	828	500/A/A	
	245/30ZR20	97 W XL	8.0- <b>8.5</b> -9.0	9.8	7.8	25.8	656	9.8	248	1609	730	49	340	804	500/A/A	
	275/30ZR20	97 W XL	9.0- <b>9.5</b> -10.0	10.2	8.1	26.5	674	10.9	278	1609	730	49	340	783	500/A/A	
	225/30ZR22	89 W XL	6.0- <b>7.0</b> -7.5	9.8	7.8	27.1	688	9.5	241	1279	580	49	340	767	500/A/A	
	235/30ZR22	90 W XL	<b>8.5</b>	9.8	7.8	27.6	701	9.5	241	1323	600	49	340	753	500/A/A	
35	245/30ZR22	95 W XL	8.0- <b>8.5</b> -9.0	9.8	7.8	27.8	707	9.8	248	1521	690	49	340	746	500/A/A	
	255/35ZR18	94 W XL	8.5- <b>9.0</b> -10.0	9.8	7.8	25.0	635	10.2	260	1477	670	49	340	831	500/A/A	
	265/35ZR18	97 W XL	9.0- <b>9.5</b> -10.5	9.8	7.8	25.3	643	10.7	271	1609	730	49	340	820	500/A/A	
	215/35ZR19	85 W XL	7.0- <b>7.5</b> -8.5	9.8	7.8	24.9	633	8.6	218	1135	515	49	340	833	500/A/A	
	225/35ZR19	88 W XL	7.5- <b>8.0</b> -9.0	9.8	7.8	25.2	641	9.1	230	1235	560	49	340	823	500/A/A	
	255/35ZR19	96 W XL	8.5- <b>9.0</b> -10.0	9.8	7.8	26.0	661	10.2	260	1565	710	49	340	798	500/A/A	
	225/35ZR20	90 W XL	7.5- <b>8.0</b> -9.0	9.8	7.8	26.2	666	9.1	230	1102	600	49	340	792	500/A/A	
	235/35ZR20	92 W XL	7.5- <b>8.5</b> -9.5	9.8	7.8	26.5	672	9.5	241	1389	630	49	340	785	500/A/A	
	245/35ZR20	95 W XL	8.0- <b>8.5</b> -9.5	9.8	7.8	26.8	680	9.8	248	1235	690	49	340	776	500/A/A	
	255/35ZR20	97 W XL	8.5- <b>9.0</b> -10.0	9.8	7.8	27.0	686	10.2	260	1609	730	49	340	769	500/A/A	
40	275/35ZR20	102 W XL	9.0- <b>9.5</b> -11.0	10.2	8.1	27.6	700	10.9	278	1874	850	49	340	754	500/A/A	
	205/40ZR17	84 W XL	7.0- <b>7.5</b> -8.0	9.8	7.8	23.5	596	8.3	212	1102	500	49	340	885	500/A/A	
	215/40ZR17	87 W XL	6.5- <b>7.0</b> -7.5	9.8	7.8	23.8	604	8.6	218	1201	545	49	340	873	500/A/A	
	255/40ZR17	94 W	5.5- <b>6.5</b> -7.5	9.8	7.8	25.0	636	10.2	260	1477	670	44	300	829	500/A/A	
	225/40ZR18	92 W XL	7.5- <b>8.0</b> -9.0	9.8	7.8	25.1	637	9.1	230	1389	630	49	340	828	500/A/A	
	235/40ZR18	95 W XL	8.0- <b>8.5</b> -9.5	9.8	7.8	25.4	645	9.5	241	1521	690	49	340	818	500/A/A	
	245/40ZR18	97 W XL	8.0- <b>8.5</b> -9.5	9.8	7.8	25.7	653	9.8	248	1609	730	49	340	808	500/A/A	
	255/40ZR18	99 W XL	8.5- <b>9.0</b> -10.0	9.8	7.8	26.0	661	10.2	260	1709	775	49	340	798	500/A/A	
	245/40ZR19	98 W XL	8.0- <b>8.5</b> -9.5	9.8	7.8	26.7	679	9.8	248	1653	750	49	340	777	500/A/A	
	255/40ZR19	100 W XL	8.5- <b>9.0</b> -10.0	9.8	7.8	27.0	687	10.2	260	1764	800	49	340	768	500/A/A	
45	205/45ZR16	87 W XL	6.5- <b>7.0</b> -7.5	9.8	7.8	23.2	590	8.1	206	1201	545	49	340	894	500/A/A	
	215/45ZR16	86 W	7.0- <b>7.5</b> -8.0	9.8	7.8	23.6	600	8.4	213	1168	530	44	300	879	500/A/A	
	205/45ZR17	88 W XL	6.5- <b>7.0</b> -7.5	9.8	7.8	24.3	616	8.1	206	1235	560	49	340	856	500/A/A	
	225/45ZR17	94 W XL	7.0- <b>7.5</b> -8.5	9.8	7.8	25.0	634	8.9	225	1477	670	49	340	832	500/A/A	
	235/45ZR17	97 W XL	7.5- <b>8.0</b> -9.0	9.8	7.8	25.4	644	9.3	236	1609	730	49	340	819	500/A/A	
	245/45ZR17	99 W XL	7.5- <b>8.0</b> -9.0	9.8	7.8	25.7	652	9.6	243	1709	775	49	340	809	500/A/A	
	255/45ZR17	98 W	8.0- <b>8.5</b> -9.5	9.8	7.8	26.1	662	10.0	255	1102	750	44	300	797	500/A/A	
	215/45ZR18	89 W	7.0- <b>7.5</b> -8.0	9.8	7.8	25.6	651	8.4	213	1279	580	44	300	810	500/A/A	
	225/45ZR18	95 W XL	7.0- <b>7.5</b> -8.5	9.8	7.8	25.9	659	8.9	225	1235	690	49	340	801	500/A/A	
	235/45ZR18	98 W XL	7.0- <b>7.5</b> -8.5	9.8	7.8	26.3	669	9.3	236	1653	750	49	340	789	500/A/A	
50	245/45ZR18	100 W XL	7.0- <b>7.5</b> -8.5	9.8	7.8	26.7	677	9.6	243	1764	800	49	340	779	500/A/A	
	255/45ZR18	99 W	8.0- <b>8.5</b> -9.5	9.8	7.8	27.0	687	10.0	255	1709	775	44	300	768	500/A/A	
	245/45ZR19	102 Y XL	7.5- <b>8.0</b> -9.0	9.8	7.8	27.7	703	9.6	243	1874	850	49	340	750	500/A/A	
	285/45ZR19	107 W	9.0- <b>9.5</b> -10.5	10.2	8.1	29.1	739	11.2	285	2149	975	44	300	714	500/A/A	
	205/50ZR17	93 W XL	5.5- <b>6.5</b> -7.5	9.8	7.8	25.1	638	8.4	214	1433	650	49	340	827	500/A/A	
	215/50ZR17	95 W XL	6.0- <b>7.0</b> -7.5	9.8	7.8	25.5	648	8.9	226	1521	690	49	340	814	500/A/A	
	225/50ZR17	98 W XL	6.0- <b>7.0</b> -8.0	9.8	7.8	25.9	658	9.2	233	1653	750	49	340	802	500/A/A	
	245/50ZR18	100 W	7.0- <b>7.5</b> -8.5	9.8	7.8	27.7	703	10.0	253	1764	800	44	300	750	500/A/A	
	55	205/55ZR16	94 W XL	5.5- <b>6.5</b> -7.5	9.8	7.8	24.9	632	8.4	214	1477	670	49	340	835	500/A/A
		215/55ZR16	97 W XL	6.0- <b>7.0</b> -7.5	9.8	7.8	25.3	642	8.9	226	1609	730	49	340	822	500/A/A
225/55ZR16		95 W	6.0- <b>7.0</b> -8.0	9.8	7.8	25.7	654	9.2	233	1521	690	44	300	807	500/A/A	
215/55ZR17		94 W	6.0- <b>7.0</b> -7.5	9.8	7.8	26.3	668	8.9	226	1477	670	44	300	790	500/A/A	
60	225/55ZR17	101 W XL	6.0- <b>7.0</b> -8.0	9.8	7.8	26.8	680	9.2	233	1819	825	49	340	776	500/A/A	
	215/60R16	95 V	6.0- <b>6.5</b> -7.5	9.8	7.8	26.1	664	8.7	221	1521	690	44	300	794	500/A/A	



# LS988

Ultra High Performance Tire

**The W and Y speed rated tire that's all about precision and performance.**

Crisp cornering and excellent high-speed stability on dry roads. Confident braking in the rain. The LS988 delivers the performance discriminating drivers desire.



**LS988** Ultra High Performance Tire

Series	Size	LI SI	Approved Rim	Tread Depth		Overall Diameter		Section Width		Max. Load		Max. Pressure		Revs Per		UTQG
				1/32"	mm	inch	mm	inch	mm	lbs	kg	psi	kPa	MPH	KM/H	
30	245/30ZR20	97 W XL	8.0- <b>8.5</b> -9.0	9.8	7.8	25.8	656	9.8	248	1609	730	49	340	804		420/A/A
35	215/35ZR18	84 W XL	7.0- <b>7.5</b> -8.5	9.8	7.8	23.9	607	8.6	218	1102	500	49	340	869		420/A/A
	235/35ZR19	91 W XL	8.0- <b>8.5</b> -9.5	9.8	7.8	25.5	647	9.5	241	1356	615	49	340	815		420/A/A
	245/35ZR19	97 W XL	8.0- <b>8.5</b> -9.5	9.8	7.8	25.8	655	9.8	248	1609	730	49	340	805		420/A/A
40	225/35ZR20	93 W XL	7.5- <b>8.0</b> -9.0	9.8	7.8	26.2	666	9.1	230	1433	650	49	340	792		420/A/A
	205/40ZR17	84 W XL	7.0- <b>7.5</b> -8.0	9.8	7.8	23.5	596	8.3	212	1102	500	49	340	885		420/A/A
	215/40ZR18	89 W XL	7.0- <b>7.5</b> -8.5	9.8	7.8	24.8	629	8.6	218	1279	580	49	340	839		420/A/A
	225/40ZR18	92 W XL	7.5- <b>8.0</b> -9.0	9.8	7.8	25.1	637	9.1	230	1389	630	49	340	828		420/A/A
	235/40ZR18	97 W XL	8.0- <b>8.5</b> -9.5	9.8	7.8	25.4	645	9.5	241	1609	730	49	340	818		420/A/A
	245/40ZR18	97 W XL	8.0- <b>8.5</b> -9.5	9.8	7.8	25.7	653	9.8	248	1609	730	49	340	808		420/A/A
	235/40ZR19	96 W XL	8.0- <b>8.5</b> -9.5	9.8	7.8	26.4	671	9.5	241	1565	710	49	340	786		420/A/A
45	255/40ZR19	100 W XL	8.5- <b>9.0</b> -10.0	9.8	7.8	27.0	687	10.2	260	1764	800	49	340	768		420/A/A
	205/45ZR17	88 W XL	6.5- <b>7.0</b> -7.5	9.8	7.8	24.3	616	8.1	206	1235	560	49	340	856		420/A/A
	215/45ZR17	91 W XL	<b>7.0</b> -7.5-8.0	9.8	7.8	24.6	626	8.4	213	1356	615	49	340	843		420/A/A
	225/45ZR17	94 W XL	7.0- <b>7.5</b> -8.5	9.8	7.8	25.0	634	8.9	225	1477	670	49	340	832		420/A/A
	235/45ZR17	97 W XL	7.5- <b>8.0</b> -9.0	9.8	7.8	25.4	644	9.3	236	1609	730	49	340	819		420/A/A
	245/45ZR17	95 W	7.5- <b>8.0</b> -9.0	9.8	7.8	25.7	652	9.6	243	1521	690	44	300	809		420/A/A
	225/45ZR18	95 W XL	7.0- <b>7.5</b> -8.5	9.8	7.8	25.9	659	8.9	225	1521	690	49	340	801		420/A/A
	245/45ZR18	100 Y XL	7.5- <b>8.0</b> -9.0	9.8	7.8	26.7	677	9.6	243	1764	800	49	340	779		420/A/A
	255/45ZR18	99 W	8.0- <b>8.5</b> -9.5	9.8	7.8	27.0	687	10.0	255	1709	775	44	300	768		420/A/A
	245/45ZR19	98 Y	7.5- <b>8.0</b> -9.0	9.8	7.8	27.7	703	9.6	243	1653	750	44	300	750		420/A/A
50	225/50ZR16	92 W	6.0- <b>7.0</b> -8.0	9.8	7.8	24.9	632	9.2	233	1389	630	44	300	835		420/A/A
	205/50ZR17	93 W XL	5.5- <b>6.5</b> -7.5	9.8	7.8	25.1	638	8.4	214	1433	650	49	340	827		420/A/A
	225/50ZR17	98 W XL	6.0- <b>7.0</b> -8.0	9.8	7.8	25.9	658	9.2	233	1653	750	49	340	802		420/A/A
	245/50ZR18	100 W	7.0- <b>7.5</b> -8.5	9.8	7.8	27.7	703	10.0	253	1764	800	44	300	750		420/A/A
55	215/55ZR17	94 W	6.0- <b>7.0</b> -7.5	9.8	7.8	26.3	668	8.9	226	1477	670	44	300	790		420/A/A
	225/55ZR17	101 W XL	6.0- <b>7.0</b> -8.0	9.8	7.8	26.8	680	9.2	233	1819	825	49	340	776		420/A/A
	255/55ZR18	109 W/Y	7.0- <b>8.0</b> -9.0	9.8	7.8	29.0	737	10.4	265	2271	1030	49	340	716		420/A/A



- FOUR GROOVE WATER CHANNELING.** Four wide longitudinal grooves improve your wet road performance.
- V-SHAPED WET GRIP GROOVES.** Lateral grooves improve wet grip and hydroplaning resistance.
- V-SHAPED TREAD PATTERN.** You get excellent high-speed performance and confident braking...along with an aggressive, sporty look. And the S-shaped sipes further enhance your grip on the road.
- STRAIGHT-LINE STABILITY BARS.** Continuous circumferential blocks enhance stability during high-speed straight-line driving.
- WEAR-RESISTANT SHOULDER BARS.** Tread bars designed to reduce irregular tread wear - one of the keys to longer tire life.



# CLV1

All Season Sport Utility Tire

## High-speed highway performance for SUVs, light trucks, and 4X4s.

With H, S and T speed ratings, the CLV1 maximizes your contact with the road surface while giving you a sure grip on wet highway surfaces. Styled with an aggressive looking tread!



CLV1 All Season Sport Utility Tire

Series	Size	LI SI	PR	Approved Rim	Tread Depth		Overall Diameter		Section Width		Max. Load S		Max. Load D		Max. Pressure		Revs Per Mile
					1/32"	mm	inch	mm	inch	mm	lbs	kg	psi	kPa	psi	kPa	
75	LT 225/75R15	102/99 T	6PR/LRC	<b>6.0</b> -7.0	13.2	10.5	28.3	719	8.8	223	1875	850	1710	775	50	350	734
	LT 225/75R15	102/99 S	6PR/LRC	<b>6.0</b> -7.5	13.2	10.5	28.3	719	8.8	223	1875	850	1710	775	50	350	734
	LT 235/75R15	104/101 T	6PR/LRC	6.0- <b>6.5</b> -8.0	13.2	10.5	28.9	733	9.3	235	1985	900	1820	825	50	350	720
	LT 235/75R15	104/101 S	6PR/LRC	6.0- <b>6.5</b> -7.0	13.2	10.5	28.9	733	9.3	235	1985	900	1820	825	50	350	720

Series	Size	LI SI	Approved Rim	Tread Depth		Overall Diameter		Section Width		Max. Load		Max. Pressure		Revs Per Mile	UTQG
				1/32"	mm	inch	mm	inch	mm	lbs	kg	psi	kPa		
70	245/70R16	111 S XL	6.5- <b>7.0</b> -8.0	13.2	10.5	29.5	750	9.8	248	2403	1090	49	340	703	440/A/A
	245/70R16	111 T XL	6.5- <b>7.0</b> -8.0	13.2	10.5	29.5	750	9.8	248	2403	1090	49	340	703	440/A/A
	265/70R16	112 T	7.0- <b>8.0</b> -9.0	13.2	10.5	30.6	778	10.7	272	2469	1120	44	300	678	440/A/A
	265/70R16	112 H	7.0- <b>8.0</b> -9.0	13.2	10.5	30.6	778	10.7	272	2469	1120	44	300	678	440/A/A



- WET TRACTION GROOVES.** Zigzag longitudinal grooves disperse highway water while increasing your wet road confidence at interstate speeds.
- SOLID STABILITY RIB.** The continuous center rib ensures straight-line driving stability with just enough siping to further improve high-speed performance.
- STABLE SHOULDER DESIGN.** The large shoulders give you the contact patch you need for sure cornering and stability.
- HEAT RELEASING SHOULDER.** The CLV1's compact shoulder quietly dissipates the heat your tires generate. Less heat buildup means longer tire life.



# CLV2

All Season Highway Crossover & Sport Utility Tire

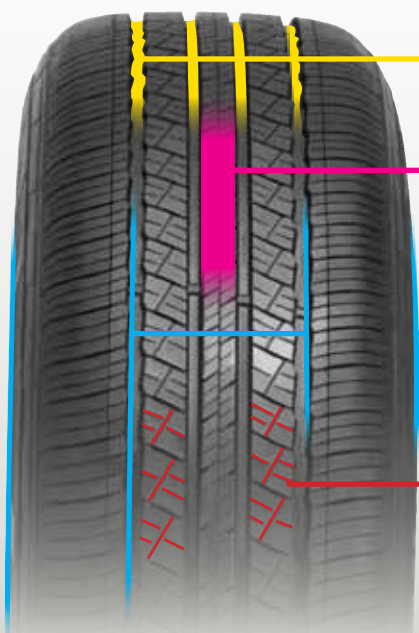
## Sure stability and performance at highway speeds.

T, H, V, and W Speed rated so you'll feel confident at highway velocity, the CLV2 also features enhanced stability tread design and stylishly civilized good looks. You'll own the road.



CLV2 All Season Highway Crossover & Sport Utility Tire

Series	Size	LI SI	Approved Rim	Tread Depth		Overall Diameter		Section Width		Max. Load		Max. Pressure		Revs Per Mile	UTQG
				1/32"	mm	inch	mm	inch	mm	lbs	kg	psi	kPa		
50	235/50ZR18	101 W XL	6.5- <b>7.5</b> -8.5	9.8	7.8	27.3	693	9.6	245	1819	825	49	340	761	500/A/A
55	235/55R17	99 V	6.5- <b>7.5</b> -8.5	10.2	8.1	27.2	690	9.6	245	1709	775	44	300	765	500/A/A
	235/55R18	104 V XL	6.5- <b>7.5</b> -8.5	9.8	7.8	28.1	715	9.6	245	1984	900	49	340	738	500/A/A
	255/55ZR18	109 W XL	7.0- <b>8.0</b> -9.0	9.8	7.8	29.0	737	10.4	265	2271	1030	49	340	716	500/A/A
60	235/60R16	100 V/H	6.5- <b>7.0</b> -8.5	9.8	7.8	27.1	688	9.4	240	1764	800	44	300	767	500/A/A
	225/60R17	99 H	6.0- <b>6.5</b> -8.0	10.2	8.1	27.6	702	9.0	228	1709	775	44	300	751	500/A/A
	235/60R18	107 V XL	6.5- <b>7.0</b> -8.5	9.8	7.8	29.1	739	9.4	240	2149	975	49	340	714	500/A/A
	245/60R18	105 V	<b>7.0</b> -8.5	9.8	7.8	29.6	751	9.8	248	2039	925	44	300	702	500/A/A
	265/60R18	114 H XL	7.5- <b>8.0</b> -9.5	9.8	7.8	30.5	775	10.7	272	2601	1180	49	340	681	500/A/A
65	235/65R16	107 H XL	6.5- <b>7.0</b> -8.5	9.8	7.8	28.0	712	9.4	240	2149	975	49	340	741	500/A/A
	225/65R17	102 H	6.0- <b>6.5</b> -8.0	9.8	7.8	28.5	724	9.0	228	1874	850	44	300	729	500/A/A
	235/65R17	108 H XL	6.5- <b>7.0</b> -8.5	9.8	7.8	29.1	738	9.4	240	2205	1000	49	340	715	500/A/A
	245/65R17	107 H	<b>7.0</b> -8.5	9.8	7.8	29.5	750	9.8	248	2149	975	44	300	703	500/A/A
	255/65R17	110 H	7.0- <b>7.5</b> -9.0	9.8	7.8	30.1	764	10.2	260	2337	1060	44	300	690	500/A/A
	265/65R17	112 H	7.5- <b>8.0</b> -9.5	9.8	7.8	30.6	776	10.7	272	2469	1120	44	300	680	500/A/A
	235/65R18	110 H XL	6.5- <b>7.0</b> -8.5	9.8	7.8	30.0	763	9.4	240	2337	1060	49	340	691	500/A/A
	265/65R18	114 H	7.5- <b>8.0</b> -9.5	9.8	7.8	31.5	801	10.7	272	2601	1180	44	300	659	500/A/A
	275/65R18	116 H	7.5- <b>8.0</b> -9.5	9.8	7.8	32.1	815	11.0	279	2756	1250	44	300	647	500/A/A
70	215/70R16	100 H	5.5- <b>6.5</b> -7.0	9.8	7.8	27.9	708	8.7	221	1764	800	44	300	745	500/A/A
	225/70R16	103 H/T	6.0- <b>6.5</b> -7.5	9.8	7.8	28.4	722	9.0	228	1929	875	44	300	731	500/A/A
	235/70R16	106 H	6.0- <b>7.0</b> -8.0	9.8	7.8	29.0	736	9.4	240	2094	950	44	300	717	500/A/A
	265/70R16	112 H	7.0- <b>8.0</b> -9.0	10.2	8.1	30.6	778	10.7	272	2469	1120	44	300	678	500/A/A
	245/70R17	110 H	6.5- <b>7.0</b> -8.0	10.2	8.1	30.6	776	9.8	248	2337	1060	44	300	680	500/A/A
	255/70R17	112 H	6.5- <b>7.5</b> -8.5	10.2	8.1	31.1	790	10.2	260	2469	1120	44	300	668	500/A/A
	265/70R17	115 H	7.0- <b>8.0</b> -9.0	10.2	8.1	31.7	804	10.7	272	2679	1215	44	300	656	500/A/A
255/70R18	113 H	6.5- <b>7.5</b> -8.5	10.2	8.1	32.1	815	10.2	260	2535	1150	44	300	647	500/A/A	



**WET TRACTION GROOVES.** Four wide longitudinal grooves speed water evacuation for great handling and cornering on wet pavement.

**SOLID STABILITY RIB.** The continuous center rib ensures straight-line driving stability with just enough siping to further improve high-speed performance.

**STABLE SHOULDER DESIGN.** The large shoulders give you the contact patch you need for sure cornering and stability.

**GRIP OPTIMIZED GROOVES.** The design of the CLV2's lateral and longitudinal grooves delivers extra gripping ability, more control, and better braking performance.



# LS588 SUV/CUV

All Season Performance Crossover & Sport Utility Tire

## Comfort and Fuel Economy

You CAN have a smoother, quieter ride now in a replacement SUV/CUV tire. This All Season Ultra High Performance tire provides redefined comfort with enhanced handling and stability. And you get better fuel economy with our advanced silica compound designed to reduce rolling resistance.



**ADVANCED TREAD COMPOUND.** Our advanced silica tread compound boosts rolling resistance and helps improve fuel efficiency.

**OPTIMIZED TREAD DESIGN.** Our computer-aided design has optimized the tread pitch and alignment reducing road noise levels at higher speeds.

**LATERAL AND LONGITUDINAL GROOVES.** Deliver smooth handling and better control on dry and wet roads.

**WET GRIP SIPES AND GROOVES.** Added sipes and grooves improves hydroplaning resistance and better handling on wet roads.

**DRY GRIP.** Tread design creates a much larger contact area allowing better stability, cornering and control.

## LS588 SUV/CUV All Season Performance Crossover & Sport Utility Tire

Series	Size	LI SI	Approved Rim	Tread Depth		Overall Diameter		Section Width		Max. Load		Max. Pressure		Revs Per Mile	UTQG
				1/32"	mm	inch	mm	inch	mm	lbs	kg	psi	kPa		
25	275/25ZR26	98 W XL	<b>10.5</b>	10.2	8.1	31.5	799	11.1	283	1653	750	49	340	660	500/A/A
	295/25ZR24	109 W XL	10.0- <b>10.5</b> -11.0	9.8	7.8	29.6	752	11.6	295	2271	1030	49	340	702	500/A/A
30	325/30R21	108 V XL	11.0- <b>11.5</b> -12.0	10.2	8.1	28.7	729	13.0	331	2205	1000	49	340	724	500/A/A
	245/30ZR24	94 W XL	8.0- <b>8.5</b> -9.0	9.8	7.8	28.8	732	9.8	248	1477	670	49	340	721	500/A/A
	295/30ZR24	109 W XL	10.0- <b>10.5</b> -11.0	10.2	8.1	31.5	800	12.6	320	2271	1030	49	340	659	500/A/A
	305/30ZR26	109 W XL	10.5- <b>11.0</b> -11.5	10.2	8.1	33.2	844	12.3	313	2271	1030	49	340	625	500/A/A
35	315/35ZR20	110 W XL	10.5- <b>11.0</b> -12.5	10.2	8.1	28.7	728	12.6	320	2337	1060	49	340	725	500/A/A
	285/35R21	105 V XL	9.5- <b>10.0</b> -11.0	10.2	8.1	28.9	733	11.4	290	2039	925	49	340	720	500/A/A
	295/35R21	107 V XL	10.0- <b>10.5</b> -11.5	10.2	8.1	29.1	739	11.9	301	2149	975	49	340	714	500/A/A
	265/35ZR22	102 W XL	9.0- <b>9.5</b> -10.5	9.8	7.8	29.3	745	10.7	271	1874	850	49	340	708	500/A/A
	285/35ZR22	106 W XL	9.5- <b>10.0</b> -11.0	10.2	8.1	29.9	759	11.4	290	2094	950	49	340	695	500/A/A
	295/35R24	110 V XL	10.0- <b>10.5</b> -11.5	10.2	8.1	32.1	816	11.9	301	2337	1060	49	340	646	500/A/A
	305/35R24	112 V XL	10.0- <b>11.0</b> -12.0	10.2	8.1	32.4	824	12.3	313	2469	1120	49	340	640	500/A/A
40	265/40ZR22	106 W XL	9.0- <b>9.5</b> -10.5	9.8	7.8	30.4	771	10.7	271	2094	950	49	340	684	500/A/A
	275/40ZR20	106 W XL	9.0- <b>9.5</b> -11.0	10.2	8.1	28.7	728	10.9	278	2094	950	49	340	725	500/A/A
	295/40ZR21	111 W XL	10.0- <b>10.5</b> -11.5	10.2	8.1	30.3	769	11.9	301	2403	1090	49	340	686	500/A/A
	305/40R22	114 V XL	10.0- <b>11.0</b> -12.0	10.2	8.1	31.6	803	12.3	313	2601	1180	49	340	657	500/A/A
45	245/45ZR20	103 W XL	7.5- <b>8.0</b> -9.0	9.8	7.8	28.7	728	9.6	243	1929	875	49	340	725	500/A/A
	255/45ZR20	105 W XL	8.0- <b>8.5</b> -9.5	9.8	7.8	29.1	738	10.0	255	2039	925	49	340	715	500/A/A
	265/45ZR20	104 W	8.5- <b>9.0</b> -10.0	9.8	7.8	29.4	746	10.5	266	1984	900	44	300	707	500/A/A
	275/45R20	110 V XL	8.5- <b>9.0</b> -10.5	10.2	8.1	29.8	756	10.7	273	2337	1060	49	340	698	500/A/A
	275/45R22	112 V XL	8.5- <b>9.0</b> -10.5	10.2	8.1	31.8	807	10.7	273	2469	1120	49	340	654	500/A/A
	285/45R22	114 V XL	9.0- <b>9.5</b> -10.5	10.2	8.1	32.1	815	11.2	285	2601	1180	49	340	647	500/A/A
	305/45R22	118 V XL	9.5- <b>10.0</b> -11.5	10.2	8.1	32.8	833	11.9	303	2910	1320	49	340	633	500/A/A
50	255/50ZR19	103 W	7.0- <b>8.0</b> -9.0	9.8	7.8	29.1	739	10.4	265	1929	875	44	300	714	500/A/A
	265/50ZR19	110 Y XL	7.5- <b>8.5</b> -9.5	9.8	7.8	29.5	749	10.9	277	2337	1060	49	340	704	500/A/A
	245/50ZR20	102 W	7.0- <b>7.5</b> -8.5	9.8	7.8	29.7	754	10.0	253	1874	850	44	300	700	500/A/A
	255/50ZR20	109 Y XL	7.0- <b>8.0</b> -9.0	9.8	7.8	30.1	764	10.4	265	2271	1030	49	340	690	500/A/A
	265/50ZR20	111 W XL	7.5- <b>8.5</b> -9.5	9.8	7.8	30.5	774	10.9	277	2403	1090	49	340	682	500/A/A
55	225/55ZR18	102 W XL	6.0- <b>7.0</b> -8.0	9.8	7.8	27.8	705	9.2	233	1874	850	49	340	748	500/A/A
	235/55R18	104 V XL	6.5- <b>7.5</b> -8.5	9.8	7.8	28.1	715	9.6	245	1984	900	49	340	738	500/A/A
	235/55ZR19	105 W XL	6.5- <b>7.5</b> -8.5	9.8	7.8	29.2	741	9.6	245	2039	925	49	340	712	500/A/A
	245/55ZR19	103 W	7.0- <b>7.5</b> -8.5	9.8	7.8	29.6	753	10.0	253	1929	875	44	300	701	500/A/A
	255/55R19	111 V XL	7.0- <b>8.0</b> -9.0	9.8	7.8	30.0	763	10.4	265	2403	1090	49	340	691	500/A/A
	275/55R19	111 V XL	7.5- <b>8.5</b> -9.5	10.2	8.1	30.9	785	11.2	284	2403	1090	44	300	672	500/A/A
	275/55ZR20	117 W XL	7.5- <b>8.5</b> -9.5	10.2	8.1	31.9	810	11.2	284	2833	1285	49	340	651	500/A/A
60	215/60R17	96 H	6.0- <b>6.5</b> -7.5	9.8	7.8	27.2	690	8.7	221	1565	710	44	300	765	500/A/A
	235/60R18	107 V XL	6.5- <b>7.0</b> -8.5	9.8	7.8	29.1	739	9.4	240	2149	975	49	340	714	500/A/A
	255/60R18	112 H XL	7.0- <b>7.5</b> -9.0	9.8	7.8	30.0	763	10.2	260	2469	1120	49	340	691	500/A/A
	265/60R18	110 V XL	7.5- <b>8.0</b> -9.5	9.8	7.8	30.5	775	10.7	272	2337	1060	44	300	681	500/A/A
	285/60R18	120 V XL	8.0- <b>8.5</b> -10.0	10.2	8.1	31.5	799	11.5	292	3086	1400	49	340	660	500/A/A
	275/60R20	115 V	7.5- <b>8.0</b> -9.5	10.2	8.1	33.0	838	11.0	279	2679	1215	44	300	630	500/A/A
65	255/65R16	109 H	7.0- <b>7.5</b> -9.0	9.8	7.8	29.1	738	10.2	260	2271	1030	44	300	715	500/A/A
	225/65R17	102 H	6.0- <b>6.5</b> -8.0	9.8	7.8	28.5	724	9.0	228	1874	850	44	300	729	500/A/A
	265/65R17	112 H XL	7.5- <b>8.0</b> -9.5	9.8	7.8	30.6	776	10.7	272	2469	1120	44	300	680	500/A/A



# WINTER LANDER

Passenger Snow & Ice Tire

**As soon as the temperature dips below 40°, it's time to put on your Winter Landers.**

After all, even its tread compound was designed for the cold. Winter Landers will get you through snow and winter-wet conditions, while they provide stability and driving comfort even when the weather clears.



**WINTER LANDER** Passenger Snow & Ice Tire

Series	Size	LI SI	Approved Rim	Tread Depth		Overall Diameter		Section Width		Max. Load		Max. Pressure		Revs Per Mile
				1/32"	mm	inch	mm	inch	mm	lbs	kg	psi	kPa	
40	225/40R18	92 H/V XL	7.5- <b>8.0</b> -9.0	10.7	8.5	25.1	637	9.1	230	1389	630	49	340	828
45	225/45R17	94 H/V XL	7.0- <b>7.5</b> -8.5	10.7	8.5	25.0	634	8.9	225	1477	670	49	340	832
	245/45R18	100 H/V XL	7.5- <b>8.0</b> -9.0	10.7	8.5	26.7	677	9.6	243	1764	800	49	340	779
50	205/50R17	93 H XL	5.5- <b>6.5</b> -7.5	10.7	8.5	25.1	638	8.4	214	1433	650	49	340	827
55	195/55R15	85 H	5.5- <b>6.0</b> -7.0	10.7	8.5	23.4	595	7.9	201	1135	515	44	300	887
	195/55R16	97 H	5.5- <b>6.0</b> -7.0	10.7	8.5	24.4	620	7.9	201	1201	545	44	300	851
	205/55R16	91 H/T	6.0- <b>6.5</b> -7.5	10.7	8.5	24.9	632	8.4	214	1356	615	44	300	835
	215/55R16	97 H/V XL	6.0- <b>7.0</b> -7.5	10.7	8.5	25.3	642	8.9	226	1609	730	49	340	822
	225/55R16	99 H/V XL	6.0- <b>7.0</b> -8.0	10.7	8.5	25.7	654	9.2	233	1709	775	49	340	807
	215/55R17	98 H XL	6.0- <b>7.0</b> -7.5	10.7	8.5	26.3	668	8.9	226	1653	750	49	340	790
	225/55R17	97 H	6.0- <b>7.0</b> -8.0	10.7	8.5	26.8	680	9.2	233	1609	730	44	300	776
60	185/60R14	82 H/T	5.0- <b>5.5</b> -6.5	10.7	8.5	22.8	578	7.4	189	1047	475	44	300	913
	185/60R15	88 H XL	5.0- <b>5.5</b> -6.5	10.7	8.5	23.7	603	7.4	189	1235	560	49	340	875
	195/60R15	88 H/T	5.5- <b>6.0</b> -7.0	10.7	8.5	24.2	615	7.9	201	1235	560	44	300	858
	205/60R16	96 H XL	5.5- <b>6.0</b> -7.5	10.7	8.5	25.7	652	8.2	209	1565	710	49	340	809
	215/60R16	99 H XL	6.0- <b>6.5</b> -7.5	10.7	8.5	26.1	664	8.7	221	1709	775	49	340	794
65	155/65R14	75 T	<b>4.5</b> -5.0-5.5	10.3	8.2	22.0	558	6.2	157	853	387	44	300	945
	175/65R14	82 H/T	<b>5.0</b> -5.5-6.0	10.7	8.5	23.0	584	7.0	177	1047	475	44	300	903
	185/65R14	86 H/T	5.0- <b>5.5</b> -6.5	10.7	8.5	23.5	596	7.4	189	1168	530	44	300	885
	185/65R15	88 H/T	5.0- <b>5.5</b> -6.5	10.7	8.5	24.4	621	7.4	189	1235	560	44	300	850
	195/65R15	91 H/T	5.5- <b>6.0</b> -7.0	10.7	8.5	25.0	635	7.9	201	1356	615	44	300	831
	205/65R15	94 H/T	5.5- <b>6.0</b> -7.5	10.7	8.5	25.5	647	8.2	209	1477	670	44	300	815
	215/65R16	98 H/T	6.0- <b>6.5</b> -7.5	10.7	8.5	27.0	686	8.7	221	1653	750	44	300	769
	70	165/70R14	81 T	4.0- <b>5.0</b> -5.5	10.3	8.2	23.1	588	6.7	170	1019	462	44	300



**ADVANCED WINTER-GRIP COMPOUNDING.** The Winter Lander's tread compound is specially formulated for the cold — so it delivers enhanced traction and braking when warm-season tires can't.

**WET TRACTION TREAD DESIGN.** The V-shaped tread quickly evacuates water for outstanding wet handling, decreased hydroplaning and low noise.

**SNOW TRACTION GROOVE DESIGN.** The sipe pattern is organized in high-density waves so that each sipe can apply maximum force to the snowy road surface.

**3-D, STAY-OPEN SIPES.** They stay open when they make contact with the ground, so they can bite into snow more effectively.

**STIFF SHOULDER DESIGN.** The shoulder is specially designed with stiff blocks that deliver cornering stability and driving comfort.



# WINTER STAR

Crossover and Sport Utility Snow & Ice Tire

## Winter Star...because bigger vehicles need better snow traction.

Its zigzag sipes were specially designed for the snow, and its tread compound was designed for the extreme cold. Don't miss out on winter sports or events this season. Put Winter Stars on when the temperature falls below 40°.



WINTER STAR Crossover and Sport Utility Snow & Ice Tire

Series	Size	LI SI	Approved Rim	Tread Depth		Overall Diameter		Section Width		Max. Load		Max. Pressure		Revs Per Mile
				1/32"	mm	inch	mm	inch	mm	lbs	kg	psi	kPa	
55	235/55R17	103 H/V XL	6.5- <b>7.5</b> -8.5	12.0	9.5	27.2	690	9.6	245	1929	875	49	340	765
	255/55R18	109 H/V XL	7.0- <b>8.0</b> -9.0	12.0	9.5	29.0	737	10.4	265	2271	1030	49	340	716
60	215/60R17	96 T/H	6.0- <b>6.5</b> -7.5	12.0	9.5	27.2	690	8.7	221	1565	710	44	300	765
65	225/65R17	102 T/H	6.0- <b>6.5</b> -8.0	12.0	9.5	28.5	724	9.0	228	1874	850	44	300	729
	235/65R17	108 H XL	6.5- <b>7.0</b> -8.5	12.0	9.5	29.1	738	9.4	240	2205	1000	49	340	715
70	245/65R17	107 T/H	<b>7.0</b> -7.5-8.5	12.0	9.5	29.5	750	9.8	248	2149	975	44	300	703
	215/70R16	100 T/H	5.5- <b>6.5</b> -7.0	12.0	9.5	27.9	708	8.7	221	1764	800	44	300	745
	245/70R17	110 S/T	6.5- <b>7.0</b> -8.0	12.0	9.5	30.6	776	9.8	248	2337	1060	44	300	680



**3-D, STAY-OPEN SIPES.** They stay open when they make contact with the ground, so they can bite into snow more effectively.

**COLD WEATHER TREAD COMPOUND.** The Winter Star's high silica tread compound is formulated to improve grip, traction and braking in the extreme cold of northern winters.

**ADVANCED SHOULDER DESIGN.** The shoulder is specially designed to fight hydroplaning with small holes that efficiently absorb the thin layer of water that coats ice and snow.

**WINTER-STABLE TREAD DESIGN.** The extended center arrow block improves handling and braking stability while the large directional blocks on either side improve wet and dry grip.





# SNOW STAR

Commercial Van Snow & Ice Tire

## Exceptional cold weather traction for vans and large mini-vans.

Whether you are toting cargo or the kid's hockey team, you need the kind of winter traction and confidence that Landsail Snow Stars deliver. Put them on when the temperature falls below 40°.



## SNOW STAR Commercial Van Snow & Ice Tire

Series	Size	LI SI	PR	Approved Rim	Tread Depth		Overall Diameter		Section Width		Max. Load S		Max. Load D		Max. Pressure		Revs Per Mile
					1/32"	mm	inch	mm	inch	mm	lbs	kg	lbs	kg	psi	kPa	
65	195/65R16C	104/102 T	8PR/LRD	5.5- <b>6.0</b>	12.5	9.9	26.0	660	7.9	201	1984	900	1874	850	69	475	799
	205/65R16C	107/105 T	8PR/LRD	5.5- <b>6.0</b> -6.5	12.5	9.9	26.5	672	8.2	209	2149	975	2039	925	69	475	785
	215/65R16C	109/107 T	8PR/LRD	6.0- <b>6.5</b> -7.0	12.5	9.9	27.0	686	8.7	221	2271	1030	2149	975	69	475	769
	235/65R16C	115/113 S	8PR/LRD	6.5- <b>7.0</b> -7.5	13.0	10.3	28.0	712	9.4	240	2679	1215	2535	1150	69	475	741
70	195/70R15C	104/102 S	8PR/LRD	5.0-5.5- <b>6.0</b>	12.5	9.9	25.8	655	7.9	201	1984	900	1874	850	65	450	805
	205/70R15C	106/104 S	8PR/LRD	5.5- <b>6.0</b> -6.5	12.5	9.9	26.3	669	8.2	209	2094	950	1984	900	65	450	789
	225/70R15C	112/110 S	8PR/LRD	6.0- <b>6.5</b> -7.0	13.0	10.3	27.4	697	9.0	228	2469	1120	2337	1060	69	475	757
	185R14C	102/100 Q	8PR/LRD	<b>5.0</b> -5.5-6.0	11.6	9.2	25.6	650	7.4	188	1874	850	1764	800	69	475	812



**3-D, STAY-OPEN SIPES.** They stay open when they make contact with the ground, so they can bite into snow more effectively.

**COLD WEATHER TREAD COMPOUND.** The Snow Star's high silica tread compound is formulated to improve grip, traction and braking in the extreme cold of northern winters.

**WET GRIP GROOVE DESIGN.** Three wide longitudinal grooves evacuate road water out from under the tire for improved steering, braking and hydroplaning resistance.

**SAW TOOTH LATERAL GROOVES.** They're designed to maximize grip force and maintain steering stability.

**ADVANCED SHOULDER DESIGN.** The shoulder is specially designed to reduce both wind resistance and heat build-up.

24 LANDSAILTIRES.COM

25 1-305-621-5101

*Bold designates measuring rim width. This data can be changed by manufacturer without prior notice.*



# LSV88

COMMERCIAL VAN TIRE

## Euro-metric Commercial Tires for Eurovans.

These "C" designated tires are designed for higher load carrying capacities. Fitments are available for a broad range of commercial vehicles.

### Typical Vehicle Fitments:

- Dodge Ram ProMaster
- Nissan NV200
- Ford Transit Connect Van/Wagon
- Mercedes-Benz Sprinter



## LSV88 Commercial Van Tire

Series	Size	LI SI	PR	Approved Rim	Tread Depth		Overall Diameter		Section Width		Max. Load S		Max. Load D		Max. Pressure		Revs Per Mile
					1/32"	mm	inch	mm	inch	mm	lbs	kg	lbs	kg	psi	kPa	
65	205/65R15C	102/100 T	6PR/LRC	5.5- <b>6.0</b> -6.5	12.6	10	25.5	647	8.2	209	1874	850	1764	800	55	375	815
	195/65R16C	104/102 T	8PR/LRD	5.5- <b>6.0</b>	11.6	9.2	26.0	660	7.9	201	1984	900	1874	850	69	475	799
	205/65R16C	107/105 T	8PR/LRD	5.5- <b>6.0</b> -6.5	12.2	9.7	26.5	672	8.2	209	2149	975	2039	925	69	475	785
	215/65R16C	109/107 T	8PR/LRD	6.0- <b>6.5</b> -7.0	12.2	9.7	27.0	686	8.7	221	2271	1030	2149	975	69	475	769
	225/65R16C	112/110 T	8PR/LRD	6.0- <b>6.5</b> -7.0	12.2	9.7	27.5	698	9.0	228	2469	1120	2337	1060	69	475	756
235/65R16C	115/113 T	8PR/LRD	6.5- <b>7.0</b> -7.5	12.2	9.7	28.0	712	9.4	240	2679	1215	2535	1150	69	475	741	
70	195/70R15C	104/102 S	8PR/LRD	5.0-5.5- <b>6.0</b>	11.6	9.2	25.8	655	7.9	201	1984	900	1874	850	65	450	805
	205/70R15C	106/104 S	8PR/LRD	5.5- <b>6.0</b> -6.5	11.6	9.2	26.3	669	8.2	209	2094	950	1984	900	65	450	789
	215/70R15C	109/107 S	8PR/LRD	5.5- <b>6.5</b> -7.0	11.6	9.2	26.9	683	8.7	221	2271	1030	2149	975	69	475	772
	225/70R15C	112/110 S	8PR/LRD	6.0- <b>6.5</b> -7.0	12.9	10.2	27.4	697	9.0	228	2469	1120	2337	1060	69	475	757
75	185/75R16C	104/102 S	8PR/LRD	<b>5.0</b> -5.5-6.0	11.6	9.2	26.9	684	7.2	184	1984	900	1874	850	69	475	771
	215/75R16C	113/111 S	8PR/LRD	5.5- <b>6.0</b> -7.0	12.9	10.2	28.7	728	8.5	216	2535	1150	2403	1090	69	475	725
	185R14C	102/100 R	8PR/LRD	5.5- <b>5.5</b> -6.5	11.6	9.2	25.6	650	7.4	188	1875	850	1765	800	65	450	812
	195R14C	106/104 R	8PR/LRD	5.5- <b>5.5</b> -6.5	11.6	9.2	26.2	666	7.8	198	2095	950	1985	900	65	450	792
	195R15C	106/104 S	8PR/LRD	5.5- <b>5.5</b> -6.5	11.6	9.2	27.0	685	7.9	200	2095	950	1985	900	65	450	770



- Three Longitudinal Grooves. Improved hydroplaning resistance while enhancing tire traction in wet weather.
- Staggered Siping. Improved braking ability when carrying those heavier loads!
- Compact Shoulder. Enhanced shoulder stability optimizes high-speed cornering performance.
- Heat- Releasing Shoulder. Continuous "S" grooves improve heat-releasing ability to maximize tire mileage and improve fuel economy.





**SPIRIT OF DRIVING**

[www.landsailtires.com](http://www.landsailtires.com)



**THE FUTURE OF TIRE TECHNOLOGY**

Led by a European technology team with over 80 years of experience in tire R&D and manufacturing, Sentury Tire has come roaring out of China to establish a presence in more than 150 countries and regions worldwide.

**Sentury Tire Americas**

16000 N.W. 59th Ave. | Suite 4 | Miami, FL 33014

Phone 305-621-5101 | Fax 305-624-7881

[www.senturytireusa.com](http://www.senturytireusa.com)