



Together And Further



SHANDONG JINYU INDUSTRIAL CO.,LTD.

Add:No.9 Guangxing Road, Guangrao Economic Development Zone, Dongying, Shandong

Tel: 0086-532-68662176

Fax: 0086-532-68662177

E-mail: PCR2@jinyutires.com

<http://www.jinyutires.com>

PCR TIRE CATALOGUE



Together And Further





ENTERPRISE INTRODUCTION

Shandong JINYU Industrial CO., LTD. is one of the subsidiaries of JINYU Tire Group.

JINYU Tire Group CO., LTD. founded in 1995, is a leader to specialize in developing and manufacturing tires and a cross-regional, cross-industrial comprehensive enterprise group, which consists of Shandong JINYU Tire Co., LTD, Shandong JINYU Industrial Co., LTD, JINYU Group (Hong Kong) Limited, JINYU International Holding Co, Limited and other subsidiary corporation.

With total assets of over USD 900 million, JINYU Tire Group Co., LTD has advanced tire production, development, test machines and professional techniques, management teams, and established complemented quality warranty systems. With the production capacity of all steel radial tires of 3.2 million pcs/year

, semi steel radial tires(PCR) of 12 million pcs/year and OTR tires of 20 thousand pcs/year, the products have been distributed widely throughout the Peoples' Republic of China, as well as over 100 oversea countries and regions.

JINYU Tire Group Co., Ltd insists on following the technology path of both absorption from others and self-development. A small step technology, enterprise will further. JINYU always respect technology research and development as the life of an enterprise, the company invested hundreds of millions RMB to establish technology R&D center with advanced technical equipment, and set up a high efficiency & quality product development team. The R&D center can accomplish raw material testing, new technology, semi-products detection, products inspection, etc. So far, the company has built one complete process development system which is from market research, product

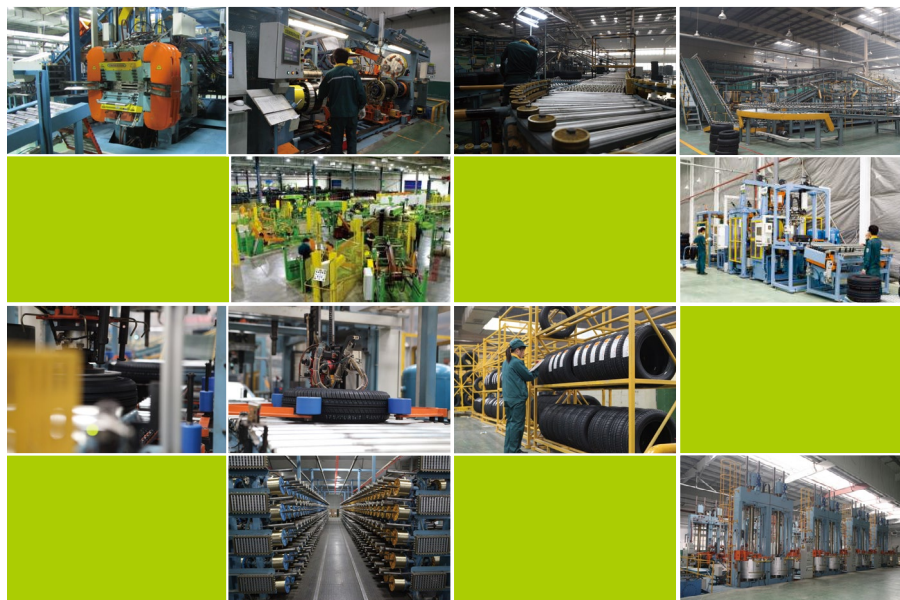
planning, formula R&D, structure design to product testing, and has ability of independently researching products of all steel LTR, TBR, OTR, semi steel radial tire (PCR) and LTR and the relative low rolling resistance, wide base low section and low noise. The company applied for several national patents, and was named "Chinese Patent Shandong Star Enterprise". In respect of production research, it widely make technical communication and cooperation with some other Guangrao rubber companies, Shandong university, Qingdao university of science and technology, Belgium BEKAERT Company etc. and obtain many technical achievements. In 2006, the company technology center was certified as provincial enterprise technology center by the provincial economic and trade commission. In 2008, it was recognized as provincial key enterprise technology center. In August of 2009, Guangrao institute of national tire process and control engineering technology research center was founded. In May 2010, central laboratory passed ISO/IEC 17025 authentication, obtained national-level laboratories approval certificate by China national recognized conformity assessment committee and at the same time it awarded "Shandong Technology Center (Tire Industry Cluster District)" title.

JINYU always insists on the spirit of the "common benefits above all", regards the target as "providing the customers with more valuable products and service wholeheartedly", sticks to customer guide, honest & trustworthy, lawful operation, scientific development and strives to realize the common benefits maximization for the stakeholders as the consumers, distributors, suppliers, employees, shareholders, community, government, enterprise etc.

JINYU tires will keep efforts for building a beautiful, harmonious society together with you.



ADVANCED EQUIPMENT



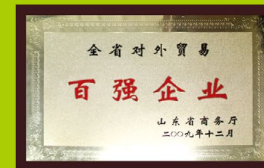


CERTIFICATES

Our company has been certified by ISO/TS16949, ISO14001, OHSAS18001, etc. The products have been certified by CCC, DOT, BIS, GCC, INMETRO, etc. and the company's laboratory has gotten through the authentication of ISO/IEC 17025.

"JINYU" brand has been awarded as "Famous Trademark of China", "Shandong Famous Brand".

JINYU Tire Group is regarded as National Creditable Enterprise, one of the most powerful 500 national informatization company, China's IM&EX. Good Quality and Faith Enterprise, China petroleum and chemical industry "top 100" export enterprise, the provincial rubber industry "top 50" enterprise, Province-level High-tech Enterprise, Shandong Best Enterprise Citizen, Provincial Banking Best Credit Faithful Customers, Key Customer of CCB Head Office Level, Core Customer of ICBC Head Office Level Industry Chain and Core Customer of International Trade Financing, The World "top50" Tire Trade company and so on.



CONTENTS



HP



UHP



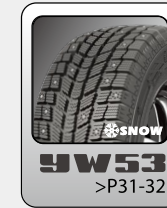
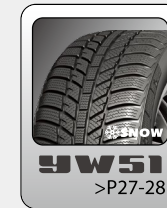
SUV



LTR



WINTER



YC01



HP



YC01

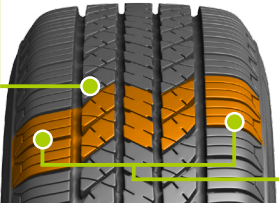


With high wear resistance, oil saving, environmental protection, and high price ratio, YC01 is the first choice for both taxis and family cars



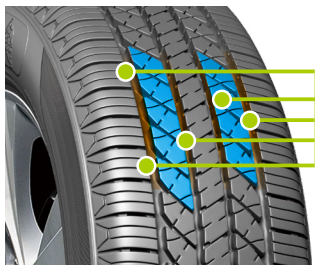
Oil-saving & Environmental protection

Special tread formula efficiently decreases rolling resistance and reduces fuel consumption, emitting less carbon



Super performance & High price ratio

Advanced design ideas integrated with improved formula and structure create a special design for family car comfort, safety, stability, performance, and high price ratio



High abrasive resistance

Application of high reinforced tread, strengthened tire cord and deepened tire ditch ensure the perfect abrasion resistance and enhanced lifetime

SIZE	LI	SS	Overall Diameter		Section Width		Standard Rim	Tread Depth		Max.Load	Max.Pressure
			mm	Inch	mm	Inch		mm	32nd inch		
155/80R12	77	T	553	21.8	157	6.2	4.50B	7.7	10	412	300
145/70R12	69	T	509	20.0	150	5.9	4.50B	7.7	10	325	300
165/70R13	79	H	562	22.1	170	6.7	5.00B	8	10	437	300
175/70R13	82	H	576	22.7	177	7.0	5.00B	8	10	475	300
185/70R13	86	H	590	23.2	189	7.4	5.50B	8	10	530	300
165/70R14	81	H	588	23.1	170	6.7	5J	8.2	10	462	300
185/60R14	82	H	578	22.8	189	7.4	5 1/2J	8.4	11	475	300
195/60R14	86	H	590	23.2	201	7.9	6J	8.5	11	530	300

LTR

SIZE	Level	LI	SS	Overall Diameter		Section Width		Standard Rim	Tread Depth		Max.Load		Max. Pressure
				mm	Inch	mm	Inch		mm	32nd inch	S(kg)	D(kg)	
165/70R13LT	8	94/92	S	562	22.1	170	6.7	5.00B	8	10	670	630	450

- XL Extra Load LI Load Index SS Speed Symbol

YC02



Low rolling resistance, high mileage and specially designed for taxis due to his low rolling resistance and high mileage attributes

~~YC02~~

HP



用括号里的！

SIZE	LI	SS	Overall Diameter		Section Width		Standard Rim	Tread Depth		Max. Load	Max. Pressure
			mm	Inch	mm	Inch		mm	32nd inch		
155/65R13	73	T	532	20.9	157	6.2	4.50B	7.5	9	365	300
new 175/70R14	84	T	602	23.7	177	7.0	5J	8.5	11	500	300
175/65R14	86	T	584	23.0	177	7.0	5 J	8	10	530	340
new 185/65R14	86	H	596	23.5	189	7.4	5 1/2J	8.5	11	530	300
new 185/60R14	82	H	578	22.8	189	7.4	5.5J	8.5	11	475	300
195/60R14	86	H	590	23.2	201	7.9	6J	8.5	11	530	300
185/65R15	92	H	621	24.4	189	7.4	5.5J	8.5	11	630	340
195/65R15	91	V	635	25.0	201	7.9	6J	8.5	11	615	300
205/65R15	94	V	647	25.5	209	8.2	6J	8.5	11	670	300
185/60R15	88	H	603	23.7	189	7.4	5 1/2J	8.5	11	560	340
new 195/60R15	88	V	615	24.2	201	7.9	6J	8.5	11	560	300
205/60R15	91	V	627	24.7	209	8.2	6J	8.5	11	615	300
195/55R15	85	V	595	23.4	201	7.9	6J	8.5	11	515	300
new 205/55R16	94	V	632	24.9	214	8.4	6 1/2J	8.5	11	670	340

● XL Extra Load LI Load Index SS Speed Symbol

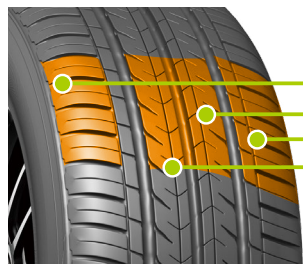


Drainage

3 longitudinal main grooves contribute to efficient drainage on wet roads

Fuel saving

Outstanding wear-proof compound and high-strength steel belt adopted by the tread will effectively reduce rolling resistance and fuel consumption



Off-Road

Wide tread and deeper grooves ensure excellent endurance and long wear life

YH11

UTQG--360/A/A



A genuine all-terrain tire, suitable for economy home cars, providing a marvelous performance under dry and wet roads, hot and cold weather

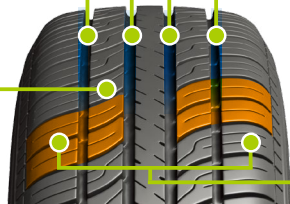
YH11

HP



Comfort

Unique patten design ensures good vibration absorption, increasing driving comfort

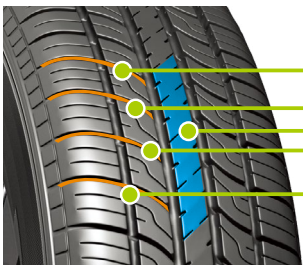


Safety

4 longitudinal main grooves contribute to efficient draining and provide great traction on wet roads; all-season design and enhanced tread compound ensure an even pressure under all weather and excellent performance on both straight and winding pavements

Silence

Optimally designed pattern order with changing pitches to diminish vibration and noise



Handling

Lateral grooves on the shoulder and crown help to provide great traction and handling stability, ensure exact cornering and braking. Enhanced center rib improves handling efficiency ensuring driving stability

SIZE	LI	SS	Overall Diameter		Section Width		Standard Rim	Tread Depth		Max.Load	Max. Pressure	
			mm	Inch	mm	Inch		mm	32nd inch			kg
155/70R12	73	T	523	20.6	157	6.2	4.50B	7	9	365	300	
155/80R13	79	T	578	22.8	157	6.2	4.50B	8	10	437	300	
165/80R13	83	T	594	23.4	165	6.5	4.50B	8	10	487	300	
155/70R13	75	T	548	21.6	157	6.2	4.50B	7.3	9	387	300	
165/70R13	79	T	562	22.1	170	6.7	5.00B	7.5	9	437	300	
165/70R13	83	T	XL	562	22.1	170	6.7	5.00B	7.5	9	487	340
175/70R13	82	T	576	22.7	177	7.0	5.00B	8	10	475	300	
185/70R13	86	T	590	23.2	189	7.4	5.50B	7.8	10	530	300	
155/65R13	73	T	532	20.9	157	6.2	4.50B	7.6	10	365	300	
165/65R13	77	T	544	21.4	170	6.7	5.00B	7.6	10	412	300	
175/60R13	77	T	540	21.3	177	7.0	5.00B	7.6	10	412	300	
185/60R13	80	T	552	21.7	189	7.4	5.50B	7.6	10	450	300	
165/70R14	81	T	588	23.1	170	6.7	5J	7.5	9	462	300	
165/70R14	85	T	XL	588	23.1	170	6.7	5J	7.5	9	515	340
175/70R14	84	T	602	23.7	177	7.0	5J	8	10	500	300	
175/70R14	88	T	XL	602	23.7	177	7.0	5J	8	10	560	340
185/70R14	88	H	616	24.3	189	7.4	5½J	8	10	560	300	
195/70R14	91	T	630	24.8	201	7.9	6J	8.4	11	615	300	
205/70R14	98	T	XL	644	25.4	209	8.2	6J	8.5	11	750	340
175/65R14	82	T	584	23.0	177	7.0	5J	8	10	475	300	
175/65R14	86	T	XL	584	23.0	177	7.0	5J	8	10	530	340
165/60R14	75	H	554	21.8	170	6.7	5J	7.6	10	387	300	
205/70R15	96	T	669	26.3	209	8.2	6J	8.5	11	710	300	
215/60R16	95	V	664	26.1	221	8.7	6½J	8.8	11	690	300	
225/60R16	98	V	676	26.6	228	9.0	6½J	8.9	11	750	300	

● XL Extra Load LI Load Index SS Speed Symbol

EXTREME33



A special pattern design created to reduce noise, improve operations, and increase compliance

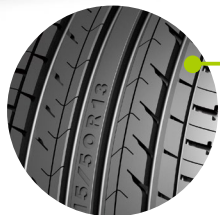
EXTREME33

HP



SIZE	LI	SS	Overall Diameter		Section Width		Standard Rim	Tread Depth		Max. Load	Max. Pressure
			mm	Inch	mm	Inch		mm	32nd inch		
215/50R13	84	H	546	21.5	226	8.9	7.00B	7	9	495	300

● XL Extra Load LI Load Index SS Speed Symbol



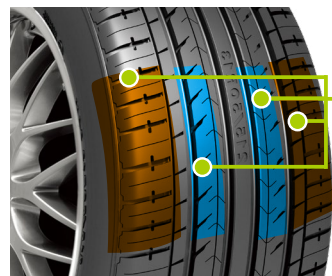
Environmental

Made from a silica compound for environmentally friendly use



Brake

4 main longitudinal grooves ensure safety with excellent brake response, firm grip, and water drainage



Adhesive

Ground connection
Increased adhesive force allows for better grip on dry and wet roads

Increased adhesive force allows for better grip on dry

YU61

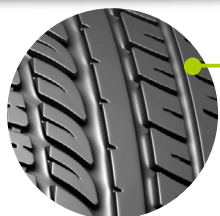
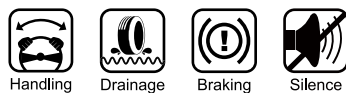
UTQG--280/AA/A



This pattern provides you with excellent handling. Silicon mater in the tread provides low rolling resistance and outstanding environment protection performance. Green Tire



UHP

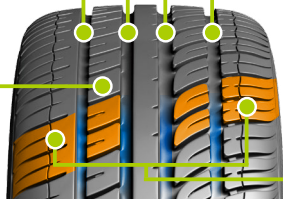


Pitch Order

Pre-simulated pitch order increases driving comfort, efficiently lowers noise

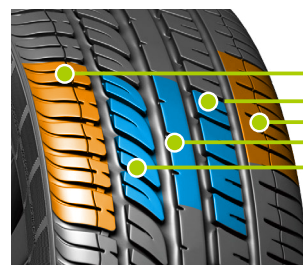
Grip

Simple but skillful pattern design improves grip and draining abilities and lowers the risk of hydroplaning



Dry and Wet Road Performance

Optimized tread formula ensures excellent skid resistance on wet roads, high traction and low rolling resistance on dry roads



Excellent Handling

Impressive asymmetric pattern and reinforced center rib provide good handling and braking performance; outstanding cornering ability ensures driving comfort. Inner pattern contributes to excellent water expulsion; outer pattern helps to provide a wider rubber-to-road contact area and upgrades maneuverability

SIZE	LI	SS	Overall Diameter		Section Width		Standard Rim	Tread Depth		Max.Load	Max. Pressure
			mm	Inch	mm	Inch		mm	inch(32")		
205/55ZR16	91	W	632	24.9	214	8.4	6 ½J	8.2	10	615	300
205/55ZR16	94	W	XL	632	24.9	214	8.4	6 ½J	8.2	670	340
215/55ZR16	93	W	XL	642	25.3	226	8.9	7J	8.2	650	300
215/55ZR16	97	W	XL	642	25.3	226	8.9	7J	8.2	730	340
225/55ZR16	95	W	XL	654	25.7	233	9.2	7J	8.2	690	300
225/55ZR16	99	W	XL	654	25.7	233	9.2	7J	8.2	775	340
205/50ZR16	87	W	XL	612	24.1	214	8.4	6 ½J	8.2	545	300
205/45ZR16	83	W	XL	590	23.2	206	8.1	7J	8	487	300
205/45ZR16	87	W	XL	590	23.2	206	8.1	7J	8	545	340
225/55ZR17	97	W	XL	680	26.8	233	9.2	7J	8.2	730	300
205/50ZR17	93	W	XL	638	25.1	214	8.4	6 ½J	8.2	650	340
215/50ZR17	95	W	XL	648	25.5	226	8.9	7J	8.2	690	340
225/50ZR17	98	W/Y	XL	658	25.9	233	9.2	7J	8.2	750	340
205/45ZR17	88	W	XL	616	24.3	206	8.1	7J	8	560	340
215/45ZR17	91	W	XL	626	24.6	213	8.4	7J	8.2	615	340
225/45ZR17	94	W	XL	634	25.0	225	8.9	7 ½J	8.2	670	340
235/45ZR17	94	W	XL	644	25.4	236	9.3	8J	8.2	670	300
235/45ZR17	97	W	XL	644	25.4	236	9.3	8J	8.2	730	340
245/45ZR17	95	W	XL	652	25.7	243	9.6	8J	8.2	690	300
245/45ZR17	99	W	XL	652	25.7	243	9.6	8J	8.2	775	340
205/40ZR17	84	W	XL	596	23.5	212	8.3	7 ½J	8.2	500	340
215/40ZR17	87	W	XL	604	23.8	218	8.6	7 ½J	8	545	340
235/50ZR18	101	W	XL	693	27.3	245	9.6	7 ½J	8.2	825	340
225/45ZR18	91	W	XL	659	25.9	225	8.9	7 ½J	8.2	615	300
225/45ZR18	95	W	XL	659	25.9	225	8.9	7 ½J	8.2	690	340
245/45ZR18	100	W/Y	XL	677	26.7	243	9.6	8J	8	800	340
225/40ZR18	92	W	XL	637	25.1	230	9.1	8J	8.2	630	340
235/40ZR18	95	W	XL	645	25.4	241	9.5	8 ½J	8.2	690	340
245/40ZR18	97	Y	XL	653	25.7	248	9.8	8 ½J	8	730	340
215/35ZR18	84	W	XL	607	23.9	218	8.6	7 ½J	8	500	340
255/50ZR19	107	Y	XL	739	29.1	265	10.4	8J	8	975	340
235/45ZR19	99	W	XL	695	27.4	236	9.3	8J	8	775	340
235/35ZR19	91	Y	XL	647	25.5	241	9.5	8 ½J	8.2	615	340
245/35ZR19	93	Y	XL	655	25.8	248	9.8	8 ½J	8.2	650	340

• XL Extra Load LI Load Index SS Speed Symbol

YU62

UTQG--320/A/A



YU62

Takes full advantage of tire sports properties by providing driving pleasure though outstanding handling on dry & wet surfaces and excellent driving & braking performance



UHP



Safety
Peculiar rim design protects rim from impact damage



Handling
V-shaped tread design lowers rolling resistance and offers outstanding environmental protection performance

Comfort
Small grooves and steel discs added on the tread reduce noise and contribute to comfortable driving



Drainage
Outstanding handling on dry & wet surface, excellent driving and braking performance, Takes full advantage of tire sports properties by providing driving pleasure

SIZE	LI	SS		Overall Diameter		Section Width		Standard Rim	Tread Depth		Max.Load	Max. Pressure
				mm	Inch	mm	Inch		mm	inch(32')		
235/45R17	97	W	XL	644	25.4	236	9.3	8J	8	10	730	340
245/45R18	100	W	XL	677	26.7	243	9.6	8J	8	10	800	340
235/40R18	95	W	XL	645	25.4	241	9.5	8 1/2J	8	10	690	340
245/40R18	97	W	XL	653	25.7	248	9.8	8 1/2J	8	10	730	340
275/40R18	99	W		677	26.7	278	10.9	9 1/2J	8	10	775	300
265/35R18	93	H		643	25.3	271	10.7	9 1/2J	8	10	650	300
265/50R20	111	V	XL	774	30.5	277	10.9	8 1/2J	8	10	1090	340
275/45R20	110	Y	XL	756	29.8	273	10.7	9J	8	10	1060	340
275/40R20	106	Y	XL	728	28.7	278	10.9	9 1/2J	8	10	950	340
265/40R22	106	V	XL	771	30.4	271	10.7	9 1/2J	8	10	950	340
305/35R24	112	W	XL	824	32.4	313	12.3	11J	8	10	1120	340
315/40R26	120	Y	XL	912	35.9	320	12.6	11J	8	10	1400	340
295/25R28	110	Y	XL	862	33.9	301	11.9	10 1/2J	8	10	1060	340

● XL Extra Load LI Load Index SS Speed Symbol

YU63

UTQG--280/AA/A



Innovative high performance tire that combines comfort with low oil consumption

YU63



UHP



Handling



Fuel saving



Silence



Oil Consumption

Silica compound helps to lower the rolling resistance and oil consumption



Silence

One-up block sequence with changing pitches and sipes provide low noise and high comfort



Handling

Asymmetric pattern with enhanced center rib provides perfect grip and handling, enhanced precision steering, and braking. 4 wide longitudinal main grooves with horizontal grooves enhance water expulsion and handling in wet conditions

SIZE	LI	SS		Overall Diameter		Section Width		Standard Rim	Tread Depth		Max.Load	Max. Pressure
				mm	Inch	mm	Inch		mm	inch(32")		
205/55ZR16	94	W	XL	632	24.9	214	8.4	6 1/2J	8.2	10	670	340
215/55ZR16	97	W	XL	642	25.3	226	8.9	7J	8.2	10	730	340
225/55ZR16	99	W	XL	654	25.7	233	9.2	7J	8.2	10	775	340
205/50ZR16	87	W		612	24.1	214	8.4	6 1/2J	8	10	545	300
215/55ZR17	94	W		668	26.3	226	8.9	7J	8	10	670	300
225/55ZR17	101	W	XL	680	26.8	233	9.2	7J	8.2	10	825	340
205/50ZR17	93	W	XL	638	25.1	214	8.4	6 1/2J	8	10	650	340
215/50ZR17	95	W	XL	648	25.5	226	8.9	7J	8	10	690	340
225/50ZR17	98	W	XL	658	25.9	233	9.2	7J	8.2	10	750	340
205/45ZR17	88	W	XL	616	24.3	206	8.1	7J	8	10	560	340
215/45ZR17	91	W	XL	626	24.6	213	8.4	7J	8	10	615	340
225/45ZR17	94	W	XL	634	25.0	225	8.9	7 1/2J	8	10	670	340
235/45ZR17	97	W	XL	644	25.4	236	9.3	8J	8.2	10	730	340
205/40ZR17	84	W	XL	596	23.5	212	8.3	7 1/2J	8	10	500	340
245/40ZR17	95	W	XL	628	24.7	248	9.8	8 1/2J	8	10	690	340
225/45ZR18	95	W	XL	659	25.9	225	8.9	7 1/2J	8	10	690	340
245/45ZR18	100	W/Y	XL	677	26.7	243	9.6	8J	8	10	800	340
225/40ZR18	92	W	XL	637	25.1	230	9.1	8J	8	10	630	340
235/40ZR18	95	W	XL	645	25.4	241	9.5	8 1/2J	8	10	690	340
245/40ZR18	97	Y	XL	653	25.7	248	9.8	8 1/2J	8	10	730	340
new 255/35ZR18	94	Y	XL	635	25.0	260	10.2	9 J	8	10	670	340
new 255/35ZR19	96	Y	XL	661	26.0	260	10.2	9 J	8	10	710	340
new 235/35ZR19	91	Y	XL	647	25.5	241	9.5	8 1/2J	8	10	615	340
new 265/30ZR19	93	Y	XL	643	25.3	271	10.7	9 1/2J	8	10	650	340
new 245/35ZR19	93	Y	XL	655	25.8	248	9.8	8 1/2J	8	10	650	340
new 275/30ZR19	96	Y	XL	649	25.6	278	10.9	9 1/2J	8	10	710	340
new 245/40ZR19	98	Y	XL	679	26.7	248	9.8	8 1/2J	8	10	750	340
new 275/35ZR19	100	Y	XL	675	26.6	278	10.9	9 1/2J	8	10	800	340
new 255/50ZR19	107	Y	XL	739	29.1	265	10.4	8 J	8	10	975	340
new 285/45ZR20	111	Y	XL	739	29.1	285	11.2	9 1/2J	8	10	1090	340
new 275/40ZR20	106	Y	XL	728	28.7	278	10.9	9 1/2J	8	10	950	340
new 315/35ZR20	110	Y	XL	728	28.7	320.0	12.6	11 J	8	10	1060	340
new 285/35ZR21	105	Y	XL	733	28.9	290	11.4	10 J	8	10	925	340
new 295/35ZR21	107	Y	XL	739	29.1	301	11.9	10 J	8	10	975	340
new 325/30ZR21	108	Y	XL	729	28.7	331	13.0	11 1/2J	8	10	1000	340

● XL Extra Load LI Load Index SS Speed Symbol

YS71



SUV



YS71

Urban Off-road Tire An optimized high performance, urban off-road pattern suitable for SUVs. Has excellent endurance & low noise on various types of roads



Silence

Precise design of block distances, angles, and dense small grooved help to efficiently reduce noise



Excellent Road Performance

Wide grooves provide excellent draining, gripping and driving performances on wet pavements

Crossing country

Optimal combination of wide longitudinal groove and specially designed blocks. Pressure balance structure helps to maintain good performance on paved and unpaved roads. Provides excellent sport properties and driving comfort in the field



Handling

Ladder-like structure at the bottom of the grooves connects the blocks on both sides, upgrades lateral strength, improves maneuverability and efficiently avoids picking up stones. Wide center rib provides excellent steering performance

SIZE	LI	SS	Overall Diameter		Section Width		Standard Rim	Tread Depth		Max.Load	Max. Pressure	UTQG	
			mm	Inch	mm	Inch		mm	inch(32")				kg
215/75R15	100	S	703	27.7	216	8.5	6J	9.5	12	800	300	480/A/B	
225/75R15	102	S	719	28.3	223	8.8	6J	9.5	12	850	300	480/A/B	
225/70R15	100	S	697	27.4	228	9.0	6 1/2J	9	11	800	300	480/A/B	
235/75R15	105	S	733	28.9	235	9.3	6 1/2J	9.5	12	925	300	480/A/B	
215/65R16	98	T	686	27.0	221	8.7	6 1/2J	9	11	750	300	480/A/B	
215/70R16	100	T	708	27.9	221	8.7	6 1/2J	9	11	800	300	480/A/B	
225/70R16	103	T	722	28.4	228	9.0	6 1/2J	9	11	875	300	480/A/B	
235/70R16	106	T	736	29.0	240	9.4	7J	9	11	950	300	480/A/B	
245/70R16	111	T	XL	750	29.5	248	9.8	7J	9	11	1090	340	480/A/B
255/70R16	111	T		764	30.1	260	10.2	7 1/2J	9	11	1090	300	480/A/B
265/70R16	112	S		778	30.6	272	10.7	8J	9	11	1120	300	480/A/B
225/65R17	102	S		724	28.5	228	9.0	6 1/2J	9.2	12	850	300	480/A/B
235/65R17	104	S		738	29.1	240	9.4	7J	9	11	900	300	480/A/B
245/65R17	107	S		750	29.5	248	9.8	7J	9	11	975	300	480/A/B
265/65R17	112	S		776	30.6	272	10.7	8J	9	11	1120	300	480/A/B
215/60R17	96	H		690	27.2	221	8.7	6 1/2J	9	11	710	300	480/A/A
265/70R17	115	T		804	31.7	272	10.7	8J	9	11	1215	300	480/A/B
235/60R18	107	H	XL	739	29.1	240	9.4	7J	9	11	975	340	480/A/A

● XL Extra Load LI Load Index SS Speed Symbol

YS72



YS72

An ultra-high performance SUV tire, with an excellent endurance and maneuverability



SUV

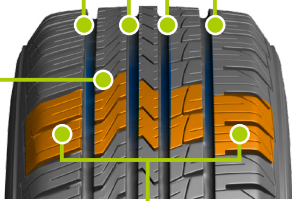


Grooves

4 longitudinal wide grooves and added grooves in every block contribute to efficient drainage, provide great traction on wet roads and enhance safety. Center rib provides excellent steering performance

Special Tread Compound

Complex material tread enhances wear-resisting property and maneuverability, provides excellent traction



Silence

Excellent varied pitch design reduces noise and makes driving more fluid and comfortable



Crossing country

Impressive asymmetric pattern and reinforced center rib provide good braking performance and ensure excellent handling performance on wet and dry roads

SIZE	LI	SS	Overall Diameter		Section Width		Standard Rim	Tread Depth		Max.Load kg	Max. Pressure kpa	UTQG	
			mm	Inch	mm	Inch		mm	32nd inch				
new 275/70R16	114	H	792	31.2	279	11.0	8J	8.8	11	1180	300	420/A/B	
235/65R17	104	H	738	29.1	240	9.4	7J	9	11	900	300	420/A/B	
new 255/60R17	106	H	738	29.1	260	10.2	7 1/2J	8.8	11	950	300	420/A/B	
new 225/60R18	100	H	727	28.6	228	9.0	6 1/2J	8.8	11	800	300	420/A/A	
235/60R18	107	V	XL	739	29.1	240	9.4	7J	9	975	340	420/A/A	
new 235/55R18	104	V	XL	715	28.1	245	9.6	7 1/2J	8	10	900	340	420/A/A
255/55R18	105	V		737	29.0	265	10.4	8J	8.6	11	925	300	420/A/A
new 235/55R19	101	V		741	29.2	245	9.6	7 1/2J	8	10	825	300	420/A/A
255/50R19	103	V		739	29.1	265	10.4	8J	8.6	11	875	300	420/A/A
new 275/60R20	115	S		838	33.0	279	11.0	8 1/2	8.8	11	1215	300	420/A/B
new 275/55R20	113	H		810	31.9	284	11.2	8 1/2	8	10	1150	300	420/A/A
225/35R20	90	W	XL	666	26.2	230	9.1	8J	8.6	11	600	340	420/A/A

● XL Extra Load LI Load Index SS Speed Symbol

YS78



SUV



Handling



Braking



Drainage



YS78



Radial tyre for pickups, vans and SUVs. Offers great traction on wet and muddy terrain, excellent handling efficiency, and outstanding driving comfort. Synchronized comfort on urban off-road conditions and poor-pavement terrain



Groove

Widening lateral grooves improve drainage when running on wet surfaces



Tread pattern

Reinforced central rib enhances maneuverability and high-speed driving performance



Specially designed tread

Unique all-terrain wide tread suits all kinds of road conditions and provides higher safety; large blocks and open-ended wide grooves ensure superior driving force on muddy roads

SIZE	PR	LI	SS	Overall Diameter		Section Width		Standard Rim	Tread Depth		Max. Load (kg)		Press	Sidewall Type
				mm	inch	mm	inch		mm	inch	S(kg)	D(kg)		
LT215/75R15	6	100/97	R	703	27.7	216	8.5	6J	12	15	800	730	350	SBL/OWL
LT235/75R15	6	104/101	R	733	28.9	235	9.3	6 1/2J	13	16	900	825	350	SBL/OWL
31X10.50R15LT	6	109	R	775	30.5	268	10.6	8 1/2J	13	16	1030	1030	350	SBL/OWL
LT215/85R16	10	115/112	R	772	30.4	216	8.5	6J	12.5	16	1215	1120	550	SBL/OWL
LT235/85R16	10	120/116	R	806	31.7	235	9.3	6 1/2J	13	16	1380	1260	550	SBL/OWL
LT225/75R16	10	115/112	R	744	29.3	223	8.8	6J	13	16	1215	1120	550	SBL/OWL
LT245/75R16	10	120/116	R	774	30.5	248	9.8	7J	13	16	1380	1260	550	SBL/OWL
LT265/75R16	10	123/120	R	804	31.7	267	10.5	7 1/2J	13	16	1550	1400	550	SBL/OWL
LT225/70R16	6	102/99	R	722	28.4	228	9.0	6 1/2J	12.5	16	850	775	350	OWL
LT265/70R16	6	110/107	R	778	30.6	272	10.7	8J	13	16	1060	975	350	SBL/OWL

● XL Extra Load LI Load Index SS Speed Symbol
SBL: Serrated Black Letter OWL: Outlined White Letter

YS76



YS76



Specially designed for light trucks, transports, and vans. Provides optimized wet and dry surface performances and high efficiency in preventing side wear; longer mileage ensure high economy

LTR



Handling



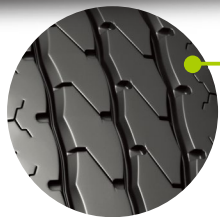
Braking



Drainage

SIZE	PR	LI	SS	Overall Diameter		Section Width		Standard Rim	Tread Depth		Max. Load (kg)		Press kpa
				mm	inch	mm	inch		mm	inch	S(kg)	D(kg)	
6.50R15LT	10	106/101	N	730	28.7	185	7.3	5.50F	10	13	950	825	560
6.50R16LT	10	107/102	N	750	29.5	185	7.3	5.50F	10.5	13	975	850	560
7.00R15LT	10	109/105	N	750	29.5	200	7.9	5.50F	10	13	1030	925	560
7.00R16LT	12	115/110	N	775	30.5	200	7.9	5.50F	10.5	13	1215	1060	670

● XL Extra Load LI Load Index SS Speed Symbol



Tread pattern

Optimized tread pattern design guarantees even pressure and enhances wear resistance



Tire structure

Scientific tire structure design and reinforced carcass material ensures super carrying capacity



Groove

S-shaped wide groove ensures efficient drainage and prevents picking up stones

YS77



YS77

Specially designed tires for commercial light trucks, minivans, and minibuses. Offers outstanding handling on wet surfaces and excellent high speed durability



LTR



Handling



Braking



Drainage



Tire structure

Scientific tire structure design and offer reinforced carrying capacity



Groove

Wider and deeper grooves increase wear resistance and drainage, at the same time providing handling and stability on all kinds of roads



Tread pattern

Original patten design ensures excellent performance on wet and dry roads while also providing better comfort

SIZE	PR	LI	SS	Overall Diameter		Section Width		Standard Rim	Tread Depth		Max. Load (kg)			Press kpa
				mm	inch	mm	inch		mm	inch	S(kg)	D(kg)		
145R12C	6	80/78	P	537	21.1	145	5.7	4.00B	8	10	450	425	350	
145R12C	8	86/84	P	537	21.1	145	5.7	4.00B	8	10	530	500	450	
155R12C	6	83/81	P	550	21.7	157	6.2	4.50B	8	10	487	462	350	
155R12C	8	88/86	P	550	21.7	157	6.2	4.50B	8	10	560	530	450	
155R13C	6	85/83	Q	578	22.8	157	6.2	4.50B	8	10	515	487	350	
165R13C	8	94/93	S	596	23.5	167	6.6	4.50B	7.6	10	670	650	450	
new 175R13C	8	97/95	S	610	24.0	177	7.0	5.00B	8	10	730	690	450	
165/70R13C	6	88/86	Q	562	22.1	170	6.7	5.00B	8	10	560	530	375	
175/70R14C	6	95/93	Q	602	23.7	177	7.0	5 J	8	10	690	650	375	
185R14C	8	102/100	Q	650	25.6	188	7.4	5 1/2J	9	11	850	800	450	
195R14C	8	106/104	Q	666	26.2	198	7.8	5 1/2J	9	11	950	900	450	
new 205R14C	8	109/107	R	686	27.0	208	8.2	6J	9	11	1030	975	450	
new 185R15C	8	103/102	R	674	26.5	188	7.4	5 1/2J	9	11	875	850	450	
195R15C	8	106/104	R	693	27.3	196	7.7	5 1/2J	9	11	950	900	450	
195/70R15C	10	104/102	R	655	25.8	201	7.9	6J	10	13	900	850	450	
215/70R15C	8	109/107	R	683	26.9	221	8.7	6 1/2J	10	13	1030	975	450	
new 225/70R15C	8	112/110	R	697	27.4	228	9.0	6 1/2J	9	11	1120	1060	450	
195/75R16C	8	107/105	R	698	27.5	196	7.7	5 1/2J	10	13	975	925	475	
195/65R16C	10	104/102	R	660	26.0	201	7.9	6J	9.4	12	900	850	475	
new 215/65R16C	8	109/107	R	686	27.0	221	8.7	6 1/2J	9	11	1030	975	475	
new 225/65R16C	8	112/110	R	698	27.5	228	9.0	6 1/2J	9	11	1120	1060	475	

● XL Extra Load LI Load Index SS Speed Symbol

YWS1



YWS1



Special tread rubber compound and complex tiny grooves help maintain softness, strong grip, and excellent manipulation of the tire in cold and snowy weather

WINTER



Tread Pattern

Reinforced center rib assures better handling performance and high speed property; multi-kerfs enhance grip and braking forces in snow and ice

Special Tread Compound

Special tread formula with silica helps tire to remain soft in low temperatures which ensures stable driving and braking forces



Grooves

Gradually widening lateral grooves improve self-cleaning and draining abilities; zigzagged longitudinal grooves enhance cleaning ability in snow field



Economy

Silica compound and low gravity center help to reduce rolling resistance, hydrocarbon emission and fuel consumption

SIZE	LI	SS	Overall Diameter		Section Width		Standard Rim	Tread Depth		Max.Load	Max. Pressure
			mm	Inch	mm	Inch		mm	inch(32")		
155/70R13	75	T	548	21.6	157	6.2	4.50B	8.5	11	387	300
165/70R13	79	T	562	22.1	170	6.7	5.00B	8.5	11	437	300
165/70R13	83	T	562	22.1	170	6.7	5.00B	8.5	11	487	340
175/70R13	82	T	576	22.7	177	7.0	5.00B	8.5	11	475	300
155/65R13	73	T	532	20.9	157	6.2	4.50B	8.5	11	365	300
165/70R14	81	T	588	23.1	170	6.7	5J	8.5	11	462	300
165/70R14	85	T	588	23.1	170	6.7	5J	8.5	11	515	340
175/70R14	84	T	602	23.7	177	7.0	5J	8.5	11	500	300
175/70R14	88	T	602	23.7	177	7.0	5J	8.5	11	560	340
185/70R14	88	H	616	24.3	189	7.4	5 1/2J	8.7	11	560	300
185/70R14	92	T	616	24.3	189	7.4	5 1/2J	8.7	11	630	340
195/70R14	91	H	630	24.8	201	7.9	6J	8.7	11	615	300
195/70R14	95	T	630	24.8	201	7.9	6J	8.7	11	690	340
* 205/70R14	98	T	644	25.4	209	8.2	6J	8.7	11	750	340
* 165/65R14	79	T	570	22.4	170	6.7	5J	8.5	11	437	300
* 175/65R14	82	H	584	23.0	177	7.0	5 J	8.7	11	475	300
175/65R14	86	T	584	23.0	177	7.0	5 J	8.7	11	530	340
* 185/65R14	86	T	596	23.5	189	7.4	5 1/2J	8.7	11	530	300
* 185/60R14	82	T	578	22.8	189	7.4	5 1/2J	8.5	11	475	300
* 195/60R14	86	T	590	23.2	201	7.9	6J	8.5	11	530	300
175/65R15	84	H	609	24.0	177	7.0	5J	8.7	11	500	300
175/65R15	88	H	609	24.0	177	7.0	5J	8.7	11	560	340
185/65R15	88	T	621	24.4	189	7.4	5 1/2J	8.7	11	560	300
185/65R15	92	T	621	24.4	189	7.4	5 1/2J	8.7	11	630	340
195/65R15	91	T	635	25.0	201	7.9	6J	8.7	11	615	300
195/65R15	95	T	635	25.0	201	7.9	6J	8.7	11	690	340
205/65R15	94	H	647	25.5	209	8.2	6J	8.5	11	670	300
215/65R15	96	H	661	26.0	221	8.7	6 1/2J	8.7	11	710	300
185/60R15	84	H	603	23.7	189	7.4	5 1/2J	8.5	11	500	300
185/60R15	88	T/H	603	23.7	189	7.4	5 1/2J	8.5	11	560	340
195/60R15	88	T	615	24.2	201	7.9	6J	8.5	11	560	300
205/60R15	91	H	627	24.7	209	8.2	6J	8.7	11	615	300
185/55R15	86	H	585	23.0	194	7.6	6J	8.5	11	530	340
195/55R15	85	H	595	23.4	201	7.9	6J	8.5	11	515	300
195/50R15	86	H	577	22.7	201	7.9	6J	8.5	11	530	340
245/70R16	107	T	750	29.5	248	9.8	7J	8.7	11	975	300
205/65R16	95	H	672	26.5	209	8.2	6J	8.7	11	690	300
215/65R16	98	H	686	27.0	221	8.7	6 1/2J	8.8	11	750	300
205/60R16	96	H	652	25.7	209	8.2	6J	8.7	11	710	340
215/60R16	99	H	664	26.1	221	8.7	6 1/2J	8.8	11	775	340
225/60R16	98	H	676	26.6	228	9.0	6 1/2J	8.7	11	750	300
195/55R16	87	H	620	24.4	201	7.9	6J	8.5	11	545	300
205/55R16	91	H	632	24.9	214	8.4	6 1/2J	8.5	11	615	300
205/55R16	94	H	632	24.9	214	8.4	6 1/2J	8.5	11	670	340
215/55R16	97	H	642	25.3	226	8.9	7J	8.7	11	730	340
225/55R16	99	H	654	25.7	233	9.2	7J	8.7	11	775	340
205/50R16	87	H	612	24.1	214	8.4	6 1/2J	8.7	11	545	300
195/45R16	84	H	582	22.9	195	7.7	6 1/2J	8.5	11	500	340
205/45R16	87	H	590	23.2	206	8.1	7J	8.7	11	545	340

● XL Extra Load LI Load Index SS Speed Symbol

The tires with * marks in the size form are shown on the illustration.



Y W 52



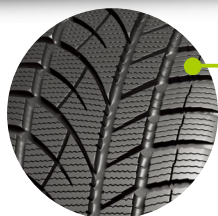
YW52



Made of a silicon compound for excellent driving performance on icy and snowy surfaces. Asymmetric pattern and wide tread deliver outstanding safety



WINTER



Safety

Upgraded silica compound makes sure the tread stays soft even in low temperature, provides first-class safety. Lateral serrated strip design on tread improves skid resistance

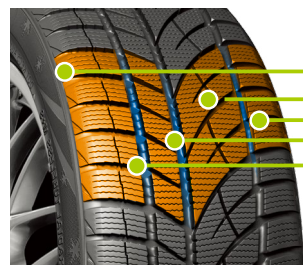


Snow

Deep and densely distributed grooves and steel sheet helps soften the tread which enhances braking power on ice covered surfaces

Handling

Asymmetric pattern features three main grooves which prove great maneuverability



Braking

Serrated design in the outside main groove assures strong grip and braking force on ice & snow covered surfaces

SIZE	LI	SS		Overall Diameter		Section Width		Standard Rim	Tread Depth		Max.Load	Max. Pressure
				mm	Inch	mm	Inch		mm	inch(32")		
185/60R14	82	T		578	22.8	189	7.4	5 1/2J	9.2	12	475	300
195/65R15	95	T	XL	635	25.0	201	7.9	6J	9.2	12	690	340
205/65R15	94	H		647	25.5	209	8.2	6J	9.2	12	670	300
215/65R16	98	H		686	27.0	221	8.7	6 1/2J	9.5	12	750	300
215/60R16	99	H	XL	664	26.1	221	8.7	6 1/2J	9.5	12	775	340
225/60R16	98	H		676	26.6	228	9.0	6 1/2J	9.5	12	750	300
205/55R16	91	H		632	24.9	214	8.4	6 1/2J	9.5	12	615	300
215/55R16	97	H	XL	642	25.3	226	8.9	7J	9.5	12	730	340
225/55R16	99	H	XL	654	25.7	233	9.2	7J	9.5	12	775	340
225/65R17	102	S		724	28.5	228	9.0	6 1/2J	9.5	12	850	300
235/65R17	104	S		738	29.1	240	9.4	7 J	9.5	12	900	300
265/65R17	112	S		776	30.6	272	10.7	8J	9.5	12	1120	300
215/55R17	94	H		668	26.3	226	8.9	7J	9.5	12	670	300
225/55R17	97	H		680	26.8	233	9.2	7J	9.5	12	730	300
235/55R17	99	H		690	27.2	245	9.6	7 1/2J	9.5	12	775	300
205/50R17	89	H		638	25.1	214	8.4	6 1/2J	9.5	12	580	300
225/50R17	98	H	XL	658	25.9	233	9.2	7J	9.5	12	750	340
205/45R17	88	H	XL	616	24.3	206	8.1	7J	9.5	12	560	340
215/45R17	87	H		626	24.6	213	8.4	7J	9.5	12	545	300
225/45R17	91	H		634	25.0	225	8.9	7 1/2J	9.5	12	615	300
235/45R17	94	H		644	25.4	236	9.3	8J	9.5	12	670	300
225/40R18	92	H	XL	637	25.1	230	9.1	8J	9.5	12	630	340
255/50R19	107	H	XL	739	29.1	265	10.4	8J	9.5	12	975	340

● XL Extra Load LI Load Index SS Speed Symbol

YW53



YW53



Excellent manipulation and braking forces, accompany you enjoy the peaceful winter. V-shaped pattern ensures outstanding manipulation and braking in snow and ice

WINTER



Braking Snow Handling Safety

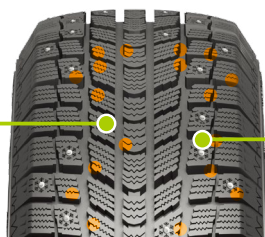
SIZE	LI	SS	Overall Diameter		Section Width		Standard Rim	Tread Depth		Max.Load	Max. Pressure	
			mm	Inch	mm	Inch		mm	32nd inch			kg
175/65R14	82	T	584	23.0	177	7.0	5 J	9.6	12	475	300	
195/65R15	91	T	635	25.0	201	7.9	6J	9.6	12	615	300	
215/65R16	98	T	686	27.0	221	8.7	6 ½J	9.6	12	750	300	
205/55R16	94	T	XL	632	24.9	214	8.4	6 ½J	9.6	12	670	340

● XL Extra Load LI Load Index SS Speed Symbol



Safety

Upgraded silica compound makes sure the tread stays soft even in low temperature; provides first-class safety



Silence

ten studded lines and pin arrayed randomly contribute to the high grip force, skid resistance to sideslip and efficiently decrease noise.



Braking

4 wide longitudinal main grooves contribute to efficient drainage. Serrated design in the main groove assures high braking force on ice and snow covered surfaces

YW60



YW60



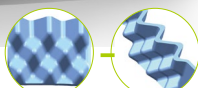
To ensure driving safety, we have installed the new 3-d steel disc, water sucking hold, and microgroove design elements, to greatly improve tracking performance, handling performance and stability performance on icy roads

WINTER



Handling

Tiny holes absorb and store water which is dispersed on the surface of the ice to enhance grip. 3D disc designs improve the tire's rigidity. This help to reduce the deformation rate while driving, and, at high speeds, makes driving more stable and comfortable while braking



Triple 3-D groove

Safety

The design of shapely and tangled grooves is conducive to discharge snow and muddy water which ensures driving safety

Grip

Tread with various tiny grooves and large pattern blocks enhances the grip while effectively improving the traction and braking performance on icy roads

Anti-skidding

Right angle design of the shoulder greatly improves driving safety by increasing anti-skidding performance on icy roads

Stability

Three-dimensional design of shoulder enhances the grip and ground stability

SIZE	LI	SS		Overall Diameter	Section Width	Standard Rim	Tread Depth	Max.Load	Max.Pressure
				mm	mm		mm	kg	kpa
new 155/70R13	75	T		548	157	4.50B	8.5	387	300
155/65R13	73	T		532	157	4.50B	8.5	365	300
165/70R13	83	T	XL	562	170	5.00B	8.5	487	340
175/70R13	82	T		576	177	5.00B	8.5	475	300
165/70R14	85	T	XL	588	170	5J	8.5	515	340
175/70R14	88	T	XL	602	177	5J	8.5	560	340
175/65R14	82	H		584	177	5J	8.5	475	300
new 185/70R14	88	H		616	189	5 1/2J	8.5	560	300
185/60R14	82	T		578	189	5 1/2J	8.5	475	300
new 195/70R14	91	H		630	201	6J	8.5	615	300
195/60R14	86	T		590	201	6J	8.5	530	300
new 205/70R14	98	H	XL	644	209	6J	8.5	750	340
195/60R15	88	T		615	201	6J	8.5	560	300
195/55R15	85	H		595	201	6J	8.5	515	300
new 205/70R15	96	T		669	209	6J	8.5	710	300
new 215/70R15	98	T		683	221	6 1/2J	8.5	750	300
new 185/65R14	86	T		596	189	5 1/2J	8.5	530	300
new 185/65R15	88	T		621	189	5 1/2J	8.5	560	300
new 195/65R14	89	T		610	201	6J	8.5	580	300
new 195/65R15	91	T		635	201	6J	8.5	615	300
new 215/65R15	96	H		661	221	6 1/2J	8.5	710	300
new 215/65R16	98	H		686	221	6 1/2J	8.5	750	300
new 205/65R15	94	H		647	209	6J	8.5	670	300
new 205/55R16	91	H		632	214	6 1/2J	8.5	615	300
new 215/60R16	99	H	XL	664	221	6 1/2J	8.5	775	340
new 205/60R16	96	H	XL	652	209	6J	8.5	710	340
new 185/60R15	88	H	XL	603	189	5 1/2J	8.5	560	340
new 215/55R17	94	H		668	226	7J	8.5	670	300
new 235/45R17	94	H		644	236	8J	8.5	670	300
new 185/55R15	86	H	XL	585	194	6J	8.5	530	340

● XL Extra Load LI Load Index SS Speed Symbol

YW70



YW70



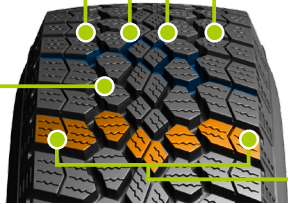
Specially designed for light truck vehicles, this tire design offers flexible handling, high load capacity, longer wear life and is made for winter conditions

WINTER



Safety

Silica-formulation tread ensures the tire is soft at low temperatures guaranteeing greater driving and grip force



Handling

Unique wide tread and contour design improves tire lifetime and ensures stability and driving comfort; unique dimple design below the tread improves snow traction



Wear

Unique highly-rigid tire sidewall compounds improve resistance to scratch and abrasion

Drainage

Deeper pattern grooves self-cleans snow and ensures traction and grip

SIZE	PR	LI	SS	Overall Diameter		Section Width		Standard Rim	Tread Depth		Max. Load (kg)		Press
				mm	inch	mm	inch		mm	inch	S(kg)	D(kg)	
LT225/75R16	10	115/112	Q	744	29.3	223	8.8	6J	12.5	16	1215	1120	550
LT245/75R16	10	120/116	Q	774	30.5	248	9.8	7J	12.5	16	1380	1260	550
LT235/80R17	10	120/117	Q	808	31.8	235	9.3	6 1/2J	12.5	16	1400	1285	550
LT225/75R17	10	116/113	Q	770	30.3	223	8.8	6J	12.5	16	1250	1150	550
LT245/75R17	10	121/118	Q	800	31.5	248	9.8	7J	12.5	16	1450	1320	550
LT245/70R17	10	119/116	Q	776	30.6	248	9.8	7J	12.5	16	1360	1250	550
LT265/70R17	10	121/118	Q	804	31.7	272	10.7	8J	12.5	16	1450	1320	550

● XL Extra Load LI Load Index SS Speed Symbol

YW90



Specially designed for light truck vehicles, this tire design offers flexible handling, high load capacity, longer wear life and is made for winter conditions

YW90

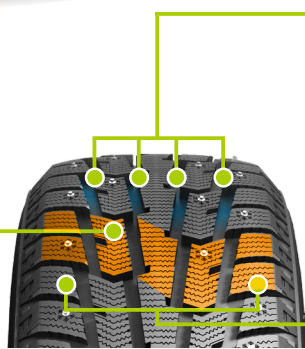


WINTER



Safety

Silica-formulation tread ensures the tire to be soft at low temperature, which ensures driving force and grip force



Drainage

Deeper pattern grooves ensures traction and grip in snow; self-cleaning

Handling

Unique wide tread and contour design on all road surfaces, improve tire lifetime and ensure stability and driving comfort; unique dimple design below the tread improves snow traction



Wear

Unique highly-rigid tire sidewall compounds improve resistance to scratch and abrasion

SIZE	LI	SS	Overall Diameter		Section Width		Standard Rim	Tread Depth		Max.Load	Max. Pressure	
			mm	Inch	mm	Inch		mm	32nd inch			kg
175/70R13	82	T	576	22.7	177	7.0	5.00B	9.9	12.5	475	300	
175/70R14	88	T	XL	602	23.7	177	7.0	5J	9.9	12.5	560	340
175/65R14	82	H		584	23.0	177	7.0	5J	9.9	12.5	475	300
185/70R14	92	T	XL	616	24.3	189	7.4	5 1/2J	9.9	12.5	630	340
185/65R14	86	T		596	23.5	189	7.4	5 1/2J	9.9	12.5	530	300
185/65R15	88	T		621	24.4	189	7.4	5 1/2J	9.9	12.5	560	300
195/65R15	91	T		635	25.0	201	7.9	6J	9.9	12.5	615	300
195/60R15	88	T		615	24.2	201	7.9	6J	9.9	12.5	560	300
205/70R15	96	T		669	26.3	209	8.2	6J	9.9	12.5	710	300
205/65R15	94	H		647	25.5	209	8.2	6J	9.9	12.5	670	300
205/60R16	96	H	XL	652	25.7	209	8.2	6J	9.9	12.5	710	340
205/55R16	91	H		632	24.9	214	8.4	6 1/2J	9.9	12.5	615	300
215/70R16	100	S		708	27.9	221	8.7	6 1/2J	9.9	12.5	800	300
215/65R16	98	H		686	27.0	221	8.7	6 1/2J	9.9	12.5	750	300
215/60R16	99	H	XL	664	26.1	221	8.7	6 1/2J	9.9	12.5	775	340
215/60R17	96	S		690	27.2	221	8.7	6 1/2J	9.9	12.5	710	300
215/50R17	91	T		648	25.5	226	8.9	7J	9.9	12.5	615	300
225/65R17	102	S		724	28.5	228	9.0	6 1/2J	9.9	12.5	850	300
235/65R17	104	S		738	29.1	240	9.4	7J	9.9	12.5	900	300
265/65R17	112	S		776	30.6	272	10.7	8J	9.9	12.5	1120	300

● XL Extra Load LI Load Index SS Speed Symbol

Together And Further