

HORIZON

2014 PASSENGER CAR TIRE GUIDE



www.hengyugroup.com

2014 HORIZON Tire

Patterns



CONTENTS

The data of this catalogue can be changed
by manufacturer without prior notice.

01

ADVANCED MANUFACTURING FACILITIES

03

PRODUCT GUIDE

PRODUCT POSITION

PRODUCT INTRODUCTION

Ultra High Performance Tire

HU901

Passenger Car Tire

HH301 HH201 HC768

SUV, LT Tire

HR801 HR802 HR805 HR701

Commercial Tire

HR601 HR602

Winter Tire

HW501 HW505 HW507

31

TECHNICAL KNOWLEDGE

SPEED RATING

LOAD INDEX

ADVANCED MANUFACTURING FACILITIES



PERFORMANCE GUARANTEE

HORIZON has specialized engineering team to be devoted into the tire research and development. The advanced testing and manufacturing facilities, scientific and optimized production managements and the strict quality control system for half-finished and finished products, guarantee the best performance of the products.



PRODUCT GUIDE

ULTRA HIGH PERFORMANCE TIRE



HU901

PASSENGER CAR TIRE



HH301



HH201



HC768

SUV ,LT TIRE



HR801



HR802



HR805



HR701

COMMERCIAL TIRE



HR601



HR602

WINTER TIRE



HW501



HW50



HW507

PRODUCT POSITIONING

PASSENGER CAR TIRE



Winter Tire

Three winter tires are shown with snowflake icons and 'NEW' labels:

- HW501**
- HW505**
- HW507**

SUV< & OFF-ROAD TIRE





PASSIONATE DRIVING
ULTRA HIGH
PERFORMANCE TIRE

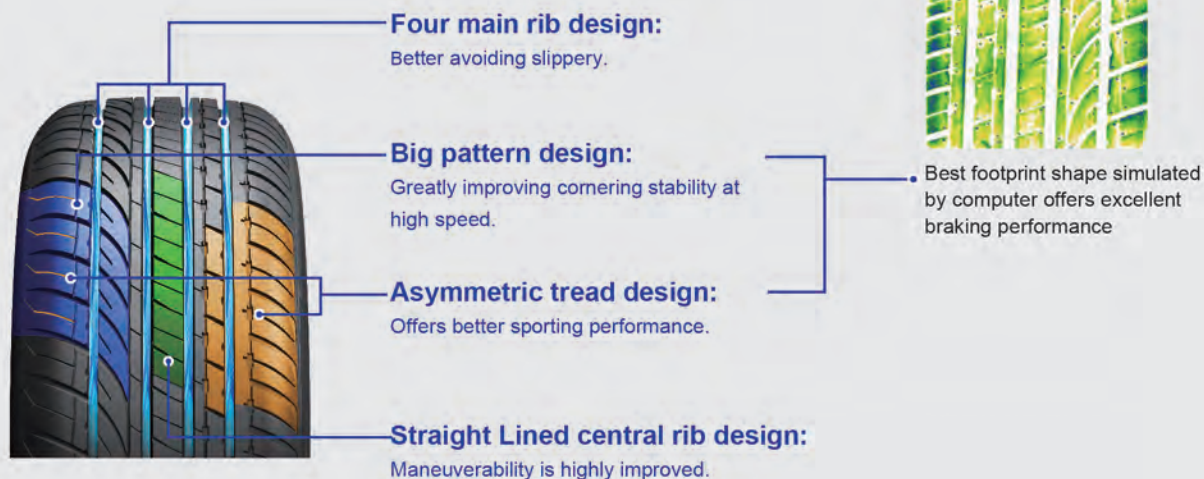




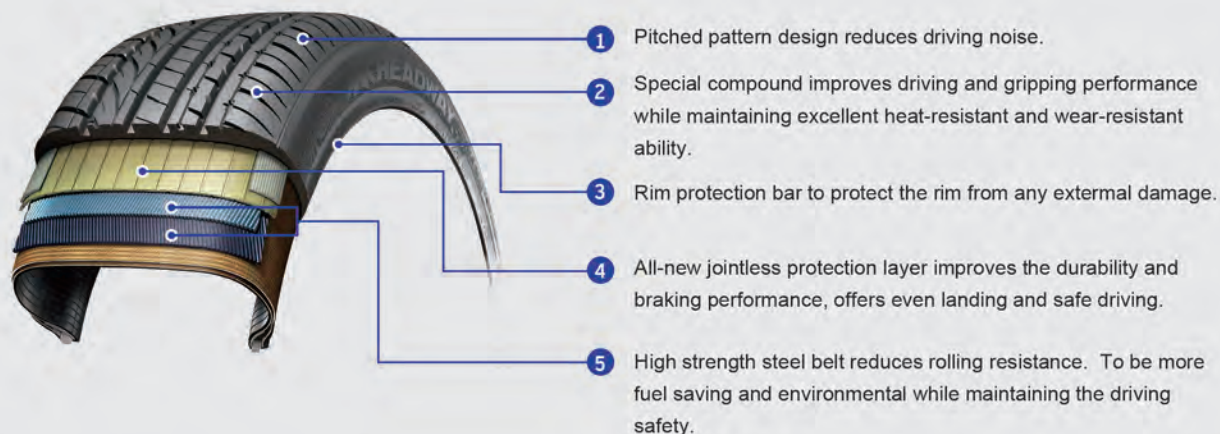
HU901

Ultra High Performance Tire
Right Choice For Luxury Cars

CHARACTERS



OUTSIDE



PERFORMANCE TEST



ULTRA HIGH PERFORMANCE TIRE RIGHT CHOICE FOR LUXURY CARS

HU901



SPECIFICATION

	SIZE	RIM SIZE	LI/SS	XL
24"				
SERIE 30				
*	255/30ZR24	24	97W	XL
22"				
SERIE 30				
*	245/30ZR22	22	92W	XL
SERIE 35				
*	265/35ZR22	22	102W	XL
SERIE 40				
*	265/40ZR22	22	106W	XL
20"				
SERIE 35				
	225/35ZR20	20	90W	XL
	245/35ZR20	20	95W	XL
	315/35ZR20	20	110W	XL
SERIE 40				
	275/40ZR20	20	106W	XL
SERIE 45				
	275/45ZR20	20	110W	XL
SERIE 50				
*	255/50R20	20	109V	XL
*	265/50R20	20	111V	XL
SERIE 55				
*	235/55ZR20	20	105W	XL
*	275/55R20	20	113V	
19"				
SERIE 35				
	235/35ZR19	19	91W	XL
	245/35ZR19	19	93W	XL
*	255/35ZR19	19	96W	XL
SERIE 40				
*	235/40ZR19	19	96W	XL

	SIZE	RIM SIZE	LI/SS	XL
19"				
SERIE 40				
*	245/40ZR19	19	98W	XL
	275/40ZR19	19	101W	
SERIE 45				
*	245/45ZR19	19	102W	XL
*	255/45ZR19	19	104W	XL
*	275/45ZR19	19	108W	XL
*	285/45R19	19	107V	
	285/45R19	19	111V	XL
SERIE 50				
*	235/50ZR19	19	103W	XL
*	255/50R19	19	107V	XL
	265/50ZR19	19	110W	XL
SERIE 55				
*	235/55ZR19	19	105W	XL
*	245/55ZR19	19	103W	
*	255/55ZR19	19	111W	XL
18"				
SERIE 35				
	215/35ZR18	18	84W	XL
*	255/35ZR18	18	94W	XL
SERIE 40				
	215/40ZR18	18	89W	XL
	225/40ZR18	18	92W	XL
	235/40ZR18	18	95W	XL
	245/40ZR18	18	97W	XL
SERIE 45				
	225/45ZR18	18	95W	XL
	235/45ZR18	18	98W	XL
	245/45ZR18	18	100W	XL
	255/45ZR18	18	99W	



	SIZE	RIM SIZE	LI/SS	XL
18"				
SERIE 55				
*	235/55ZR18	18	100W	
	235/55ZR18	18	104W	XL
	235/55ZR18	18	104W	XL
*	255/55R18	18	109V	XL
SERIE 60				
	235/60R18	18	107T	XL
	255/60R18	18	112V	XL
17"				
SERIE 40				
	205/40ZR17	17	84W	XL
	215/40ZR17	17	87W	XL
*	245/40ZR17	17	95W	XL
SERIE 45				
	205/45ZR17	17	88W	XL
	215/45ZR17	17	91W	XL
	225/45ZR17	17	94W	XL
	235/45ZR17	17	97W	XL
	245/45ZR17	17	99W	XL
SERIE 50				
	205/50ZR17	17	93W	XL
*	215/50ZR17	17	95W	XL
	225/50ZR17	17	94W	
SERIE 55				
	215/55ZR17	17	94W	
	225/55ZR17	17	101W	XL
*	235/55ZR17	17	99W	
	235/55ZR17	17	103W	XL

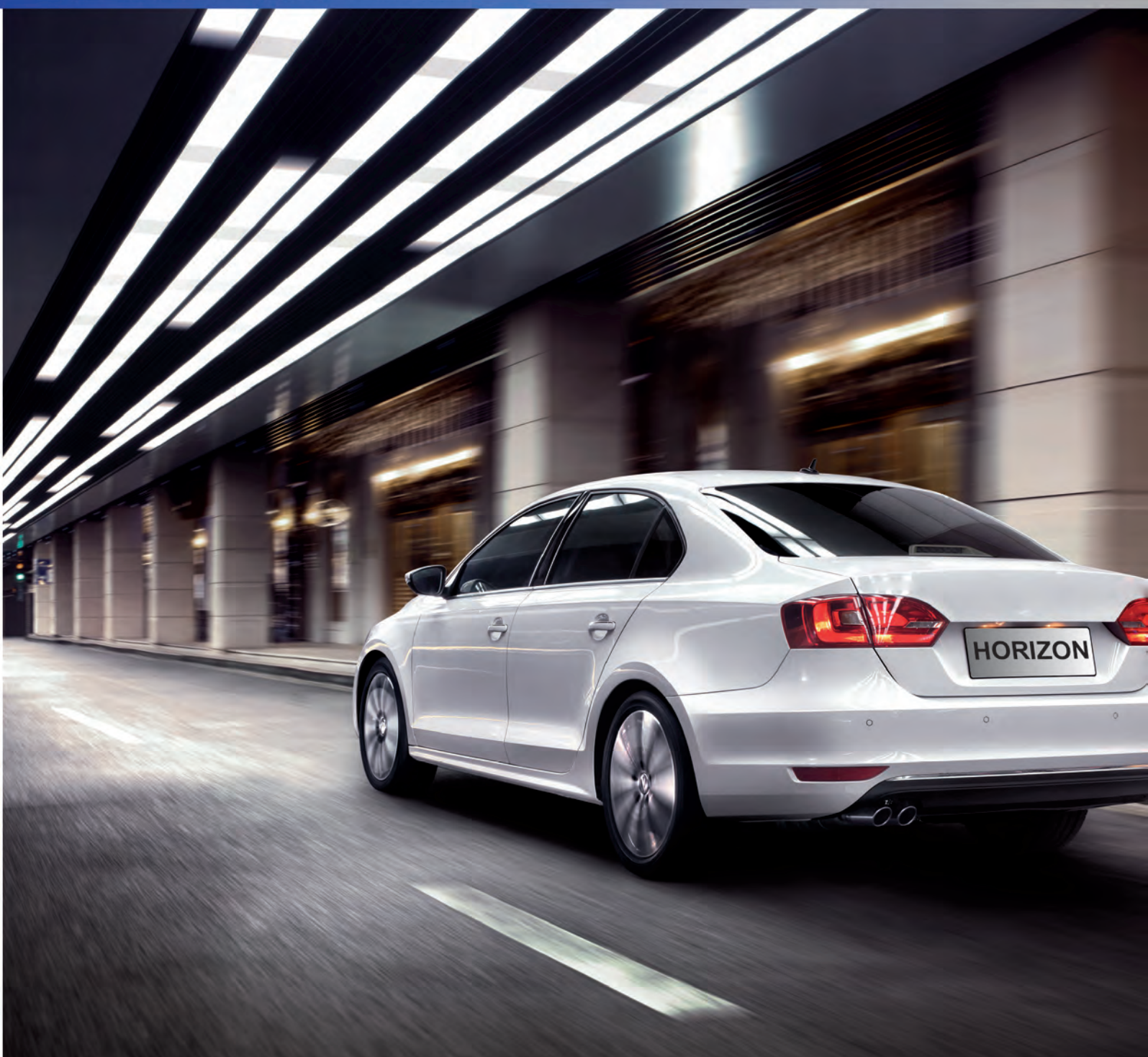
	SIZE	RIM SIZE	LI/SS	XL
17"				
SERIE 60				
	215/60R17	17	100H	XL
	255/60R17	17	110T	XL
SERIE 65				
	225/65R17	17	106T	XL
	235/65R17	17	108T	XL
	255/65R17	17	114T	XL
	265/65R17	17	116T	XL
16"				
SERIE 45				
*	195/45R16	16	80V	
	195/45R16	16	84V	XL
SERIE 50				
*	195/50R16	16	84V	
	195/50R16	16	88V	XL
	205/50ZR16	16	91W	XL
	225/50ZR16	16	92W	
SERIE 55				
*	195/55R16	16	87V	
	195/55R16	16	91V	XL
	205/55R16	16	91V	
	205/55ZR16	16	94W	XL
	215/55ZR16	16	93W	
	215/55ZR16	16	97W	XL
	225/55ZR16	16	99W	XL
	225/55ZR16	16	95W	
SERIE 70				
	215/70R16	16	100H	

*:New product under development

HORIZON



LOW NOISE LEVEL
HIGH PERFORMANCE TIRE





HH301

Perfect Combination Of Comfort And Handling For Middle Class Cars

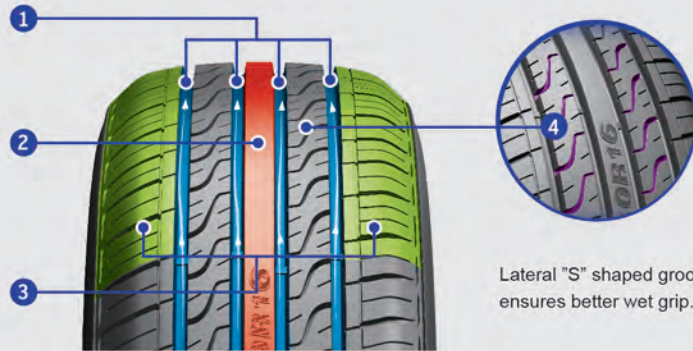
CHARACTERS

Safe Driving

4 wide longitudinal grooves design greatly improves water drainage and driving stability on slippery roads.

Widened shoulder tread design increases contacting area, providing better driving stability and reliability.

Continuous straight center rib design provides optimized ground contacting area, guarantees better driving safety.



Lateral "S" shaped groove ensures better wet grip.

Excellent Low Noise Level



5 Optimized variable pitch sequence design disperses road noise and reduces vibration, driving comfort is highly improved.

6 Symmetrical pattern design and small notched design on the tread increases the friction between the tire and the ground, driving comfort is significantly improved.

Artistic Design



Size engraving in the central rib reveals the stylish design.



PERFECT COMBINATION OF COMFORT AND HANDLING FOR MIDDLE CLASS CARS

HH301



SPECIFICATION

	SIZE	RIM SIZE	LI/SS	XL
17"				
SERIE 60				
	225/60R17	17	99T	
16"				
SERIE 55				
	205/55R16	16	90V	
	205/55R16	16	94W	XL
	215/55R16	16	93V	
SERIE 60				
	205/60R16	16	92V	
	205/60R16	16	92H	
	215/60R16	16	95V	
	215/60R16	16	95H	
	225/60R16	16	98H	
	235/60R16	16	100V	
	235/60R16	16	100H	
SERIE 65				
	215/65R16	16	98H	
	215/65R16	16	98T	

	SIZE	RIM SIZE	LI/SS	XL
16"				
SERIE 65				
	* 235/65R16	16	103H	
15"				
SERIE 50				
	195/50R15	15	82V	
	195/50R15	15	82H	
SERIE 55				
	185/55R15	15	82V	
	195/55R15	15	85V	
SERIE 60				
	185/60R15	15	84H	
	195/60R15	15	88V	
	195/60R15	15	88H	
	205/60R15	15	91H	
	205/60R15	15	91V	
SERIE 65				
	185/65R15	15	88H	
	195/65R15	15	91V	



SIZE	RIM SIZE	LI/SS	XL
15"			
SERIE 65			
195/65R15	15	91H	
205/65R15	15	94V	
205/65R15	15	94H	
215/65R15	15	96H	
SERIE 70			
205/70R15	15	96T	
205/70R15	15	96H	
215/70R15	15	98T	
215/70R15	15	98H	
SERIE 75			
* 205/75R15	15	97H	
* 235/75R15	15	105T	
14"			
SERIE 60			
185/60R14	14	82T	
185/60R14	14	82H	
195/60R14	14	86H	

SIZE	RIM SIZE	LI/SS	XL
14"			
SERIE 65			
185/65R14	14	86H	
175/65R14	14	82H	
SERIE 70			
175/70R14	14	84H	
185/70R14	14	88H	
185/70R14	14	88T	
195/70R14	14	91T	
195/70R14	14	91H	
13"			
SERIE 70			
175/70R13	13	82T	

*:New product under development

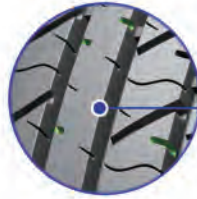


HH201

WELL BALANCED ECONOMIC TIRE

CHARACTERS

Perfect optimized variable pitch designed ensures good traction and braking ability.



Computer-optimized variable pitch sequence prevents abnormal shoulder wear.



Four main rib design reduces water film effect, leading to better handling on wet ground.



Streamlined lateral groove design improves better anti-slipping performance.



Super Silica Compound

All new silica compounded tread provides super grip power on wet ground and less rolling resistance.



SPECIFICATION

	SIZE	RIM SIZE	LI/SS	XL
15"				
SERIE 65				
	195/65R15	15	91V	
	195/65R15	15	91H	
14"				
SERIE 65				
	175/65R14	14	82H	
	185/65R14	14	86H	
SERIE 70				
	185/70R14	14	88H	
	195/70R14	14	91T	

	SIZE	RIM SIZE	LI/SS	XL
14"				
SERIE 70				
	205/70R14	14	98T	XL
	175/70R14	14	84T	
	205/70R14	14	98H	XL
	195/70R14	14	91H	
	175/70R14	14	84H	
13"				
SERIE 80				
	155/80R13	13	79T	



HC768

EXTRA HIGH MILEAGE TIRE

CHARACTERS

Optimized tread rubber compound ensures superior wear resistant performance and 25% higher mileage.

Two center rib design improves straight line stability.

Three longitudinal grooves and streamlined lateral grooves provide excellent water drainage and anti-slippery performances.

Optimized variable pitch sequence design disperses road noise effectively.

Performance Test

Mileage Ratio Comparison

- HC768 (100)
- OTHERS (75)
- COMPETITOR'S PERFORMANCE (90)

● HC768
● OTHERS

Performance Radar Chart:

- Anti wear
- Comfort
- Handling
- Noise
- Fuel Saving

Icons: Taxi, Economical

SPECIFICATION

	SIZE	RIM SIZE	LI/SS
14"			
SERIE 60			
	185/60R14	14	82T
	185/60R14	14	82H
	195/60R14	14	86H
SERIE 70			
	165/70R14	14	81T
13"			
SERIE 70			
	175/70R13	13	82T
	165/70R13	13	79T
	175/70R13	13	82H



HORIZON



**SUPER DRIVING COMFORT
SUV,LT TIRE**





HR801

ON-ROAD SUV TIRE

CHARACTERS

Excellent Handling – Optimized tread design ensuring the excellent handling performance under all-weather conditions.

Low Noise – Optimized 5 pitch tread design reduces the patten noise and to improve the comfortness.

① Optimized Pattern Design



③



Small notched design on tread patterns improves the durability of the tire and the grip performance on wet ground.



② Excellent Drainage Performance

4 longitudinal grooves interconnecting with the edge grooves offers better drainage performance, safety driving under rainy weather is further guaranteed consequently.



④ “Pop-up” Design

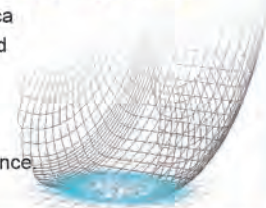
Stepped groove design avoids small stones embedded into tire patterns damaging the tire, better guarantees the driving stability.



1. Jointless and high-strength nylon covering layer.
2. High tension steel belt.
3. Dual carcass construction.
4. Jointless and high-strength bead steel wire.

Super Silica Compound

All new winter silica compounded tread provides super grip power on wet ground and less rolling resistance.



SPECIFICATION

SIZE	RIM SIZE	LI/SS
17"		
SERIE 55		
235/55R17	17	99H
235/55R17	17	99S
SERIE 60		
225/60R17	17	99S
225/60R17	17	99H
SERIE 65		
225/65R17	17	102S
235/65R17	17	104S
225/65R17	17	102H
235/65R17	17	104H
245/65R17	17	107T

SIZE	RIM SIZE	LI/SS
16"		
SERIE 65		
215/65R16	16	98T
215/65R16	16	98H
15"		
SERIE 70		
225/70R15	15	100S
225/70R15	15	100H
SERIE 75		
235/75R15	15	105S
215/75R15	15	100S
235/75R15	15	105H
215/75R15	15	100H



HR802

ON-ROAD SUV< TIRE

CHARACTERS

Excellent Water Drainage Performance

Big angle pattern block and 4 main rib designs ensures effective water drainage and safer driving on wet surface.



Widening U shaped groove provides better water drainage performance.

Safe Handling Performance



Solid shoulder pattern design provides accurate maneuverability on direction and braking.

Performance Test

Handling Performance On Dry Road



Remark: The test result is from HPR laboratory

SPECIFICATION

SIZE	RIM SIZE	LI/SS
18"		
SERIE 60		
* P265/60R18	18	109T
17"		
SERIE 65		
P245/65R17	17	107H
P255/65R17	17	110H
P265/65R17	17	112H
* P275/65R17	17	115T
SERIE 70		
P245/70R17	17	110H
P255/70R17	17	112H
LT265/70R17	17	121/118Q
P265/70R17	17	115H
LT265/70R17	17	112/109Q
SERIE 75		
LT245/75R17	17	121/118Q
16"		
SERIE 60		
P215/60R16	16	94T
SERIE 70		
* P225/70R16	16	103H
P235/70R16	16	106H

SIZE	RIM SIZE	LI/SS
16"		
SERIE 70		
P245/70R16	16	107H
P255/70R16	16	111H
P265/70R16	16	112H
SERIE 75		
225/75R16	16	115/112Q
* P235/75R16	16	106T
P245/75R16	16	111H
245/75R16	16	120/116Q
P265/75R16	16	116H
LT265/75R16	16	123/120Q
* LT265/75R16 OWL	16	123/120Q
LT285/75R16	16	122/119Q
SERIE 85		
LT215/85R16	16	115/112Q
LT235/85R16	16	120/116Q
15"		
SERIE 75		
* LT235/75R15 OWL	15	110/107T
LT235/75R15	15	104/101Q
P235/75R15	15	105H

*:New product under development



HR805

ON-ROAD SUV< TIRE

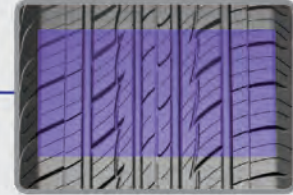
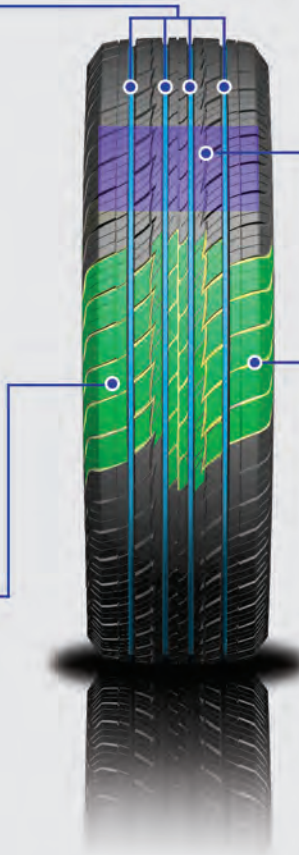
CHARACTERS



4 longitudinal grooves design guarantees the safe maneuverability on the both dry and wet road.



Noise is dispersed by increased numbers of pitches and the optimized angle design.



Superior tread design provides excellent maneuverability and grip performance under all weather conditions.



Lateral pattern grooves on shoulder part ensures the best drainage performance.

SPECIFICATION

	SIZE	RIM SIZE	LI/SS
16"			
SERIE 70			
*	215/70R16	16	100T
*	225/70R16	16	103T
*	235/70R16	16	106T
*	245/70R16	16	107T
*	255/70R16	16	111T
*	265/70R16	16	112T
*	265/70R16	16	115T

*:New product under development



HORIZON



**SUPER DRIVING COMFORT
SUV,LT TIRE**





HR701

ALL TERRAIN SUV< TIRE

CHARACTERS



Tread Pattern Design

Big tread pattern design increases the contacting area with the ground, offering excellent handling and braking performance on all terrain and all weather conditions.



Open Shoulder Design

Heat release ability is improved by open shoulder design, tire durability and driving safety is greatly enhanced.

Durability

Deep waved grooves improve the durability of the tread and wet grip performance on all terrain road conditions.



"Pop-up" Design

Stepped groove design avoids small stones embedded into tire patterns damaging the tire, better guarantees the driving stability.



Appearance Design

Exquisite sidewall pattern design represents the fashion and uniqueness of the tire.

SPECIFICATION

	SIZE	RIM SIZE	LI/SS
16"			
SERIE 75			
*	LT225/75R16	16	115/112Q
	LT245/75R16	16	120/116Q
*	LT265/75R16	16	123/120Q
SERIE 85			
*	LT235/85R16	16	120/116Q
15"			
SERIE 65			
	205/65R15	15	94H
SERIE 70			
	205/70R15	15	96T

	SIZE	RIM SIZE	LI/SS
15"			
SERIE 75			
	LT215/75R15	15	100/97R
*	225/75R15LT	15	108/104Q
	LT235/75R15	15	104/101R
	LT215/75R15	15	100/97Q
SERIE 100			
	31X10.50R15	15	109R
	31X10.50R15 OWL	15	109R
	31X10.50R15	15	109S
	31X10.50R15	15	109Q

*:New product under development.



**YOUR ECONOMIC SOLUTION FOR
RUAL TRANSPORTATION
COMMERCIAL TIRE**





HR601

COMMERCIAL TIRE

CHARACTERS

Economic & Durable Widened tread design and special tread compound improves driving stability and wear-resistant performance.

Great Adaptability Longitudinal groove design and lateral pattern design offers better grip ability on wet ground, applicable perfectly for rural transportation needs.

Travel Free Three longitudinal deepened grooves provides outstanding drainage performance on wet ground.

Heavy Load & Anti-wear Reinforced carcass and unique tread compound design guarantees heavy load ability.



"Pop-up" Design

Stepped groove design avoids small stones embedded into tire patterns.



Enhanced Carcass Design

Reinforced carcass design guarantees heavy load ability.

Excellent Drainage Performance

"之" shaped groove design provides better drainage Performance, making the pattern more applicable for rural road conditions.

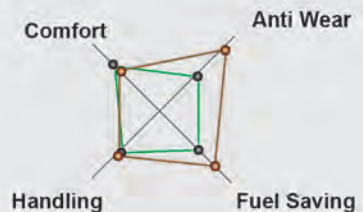
More Wear-Resistant & More Economic

Wide tread pattern design improves the wear-resistant performance. All new compound offers lower fuel consumption and guarantees rural driving safety, rural road conditions.

Performance Test



- HR601
- OTHERS



SPECIFICATION

SIZE	RIM SIZE	LI/SS
16"		
SERIE 65		
*	195/65R16C	16 104/102R
*	205/65R16C	16 107/105R
*	215/65R16C	16 109/107R
	225/65R16C	16 112/110Q
*	235/65R16C	16 115/113R
SERIE 75		
	185/75R16C	16 100/97R
	195/75R16C	16 107/105R
	205/75R16C	16 113/111R
	205/75R16C	16 110/108
	215/75R16C	16 107/104
*	215/75R16C	16 112/109R
15"		
SERIE 70		
	195/70R15C	15 93/90R
	195/70R15C	15 93/90Q
	225/70R15C	15 100/97Q

SIZE	RIM SIZE	LI/SS
15"		
SERIE 100		
*	195R15C WSW	15 106/104Q
14"		
SERIE 100		
	185R14C	14 102/100R
	185R14C	14 102/100Q
	195R14C	14 106/104Q
*	195R14C WSW	14 105/103Q
	195R14C	14 106/104R
13"		
SERIE 70		
*	165/70R13C	13 88/86Q
SERIE 100		
	155R13C	13 90/88P
	165R13C	13 94/93P

*:New product under development



**YOUR ECONOMIC SOLUTION FOR
RUAL TRANSPORTATION
COMMERCIAL TIRE**





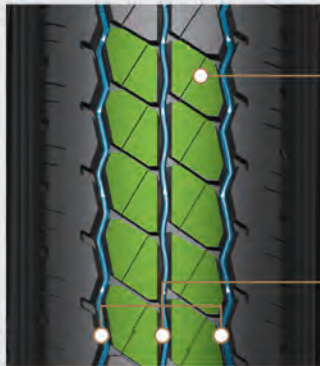
HR602

COMMERCIAL TIRE

CHARACTERS

Safety: Three longitudinal groove design and wide rib shaped pattern design enhances the water drainage performance and handling safety.

Extra long mileage: Enhanced tire body construction design and optimized compound offers extra long mileage. The small notched design on shoulder part reduces heat generation and guarantees the driving safety.



Wide rib shaped pattern design and the optimized notched design enhances the grip performance.

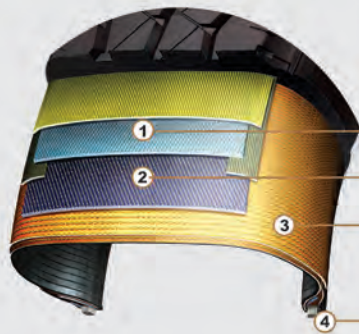
Drainage grooves increase the driving safety and handling performance on wet ground.



Enhanced tire body construction design guarantees the driving safety.

The small notched design on shoulder part reduces heat generation and noise, increases the applicability on all road conditions.

Strengthened Tire Body Construction



① Jointless and strengthened nylon cover belt.

② Higher tensility steel belt.

③ Duplex and high endurance tire body construction.

④ High tensility and jointless steel for bead toe area.



On all road conditions

SPECIFICATION

SIZE	RIM SIZE	LI/SS	XL
16"			
SERIE 100			
6.50R16	16	107/102L	
7.00R16	16	115/110L	
7.00R16	16	111/107L	
7.50R16LT	16	122/118L	



HORIZON



**SAFE CHOICE FOR YOUR WINTER
STUDDABLE WINTER TIRE**





HW501



Perfect Braking & Excellent Handling Safeguard For Your Winter

CHARACTERS



Tread Pattern Design

Perfect braking & grip power on snow/ice road conditions provided by directional pattern and studdable design.



Super Braking Power

6% widened tread design offers even landing area, improves braking and wear resistant performance on snow/ice terrain.



Excellent Drainage Performance

"V" groove design delivers perfect water drainage performance when snow melts, offers safer, more stable driving terrain road conditions.

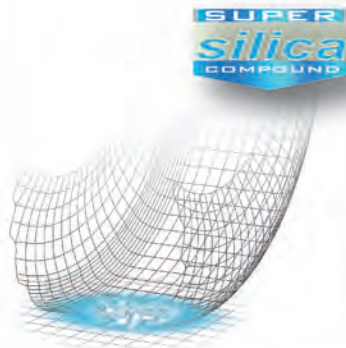


Optimized tire body construction design guarantees the driving safety.

1. Jointless and high-strength nylon covering layer.
2. High tension steel belt.
3. Dual carcass construction.
4. Jointless and high-strength bead steel wire.

Super Silica Compound

All new silica compounded tread provides super grip power on wet ground and less rolling resistance.



HORIZON

PERFECT BRAKING, EXCELLENT HANDLING.
-SAFEGUARD FOR YOUR WINTER.

HW501



SPECIFICATION

	SIZE	RIM SIZE	LI/SS
16"			
SERIE 50			
	225/50R16	16	82T
	225/50R16	16	86T
SERIE 55			
	205/55R16	16	91T
⊗	205/55R16	16	91T
	205/55R16	16	94T
	205/55R16	16	98T
	215/55R16	16	95T
	215/55R16	16	82T
	225/55R16	16	91T
	225/55R16	16	82T
	225/55R16	16	86T
SERIE 60			
	205/60R16	16	88T
	215/60R16	16	85T
	215/60R16	16	95T
	215/60R16	16	82T
	225/60R16	16	82T
	225/60R16	16	85T

	SIZE	RIM SIZE	LI/SS
16"			
SERIE 65			
	215/65R16	16	88T
15"			
SERIE 55			
	195/55R15	15	91T
	195/55R15	15	88T
SERIE 60			
	185/60R15	15	98T
	185/60R15	15	92T
	195/60R15	15	91T
	195/60R15	15	94T
	195/60R15	15	88T
	205/60R15	15	91T
	205/60R15	15	98T
	215/60R15	15	95T
	215/60R15	15	92T
SERIE 65			
⊗	185/65R15	15	88T
	185/65R15	15	93T
	185/65R15	15	84T
	195/65R15	15	91T



SPECIFICATION

	SIZE	RIM SIZE	LI/SS
15"			
SERIE 65			
⊗	195/65R15	15	91T
	195/65R15	15	98T
	195/65R15	15	95T
	205/65R15	15	91T
	205/65R15	15	98T
	205/65R15	15	94T
SERIE 70			
	205/70R15	15	95T
	215/70R15	15	94T
	215/70R15	15	95T
	215/70R15	15	96T
14"			
SERIE 60			
*	165/60R14	14	75T
	185/60R14	14	91T
	185/60R14	14	88T
SERIE 65			
	175/65R14	14	82T
	175/65R14	14	91T
	175/65R14	14	88T

	SIZE	RIM SIZE	LI/SS
14"			
SERIE 65			
	185/65R14	14	86T
	185/65R14	14	91T
	185/65R14	14	94T
SERIE 70			
	185/70R14	14	84T
	185/70R14	14	85T
	185/70R14	14	88T
	195/70R14	14	93T
	195/70R14	14	92T
13"			
SERIE 70			
	175/70R13	13	91T
	175/70R13	13	79T
	175/70R13	13	82T
SERIE 80			
	155/80R13	13	98T

⊗ : Non-studdable

*: New product under development

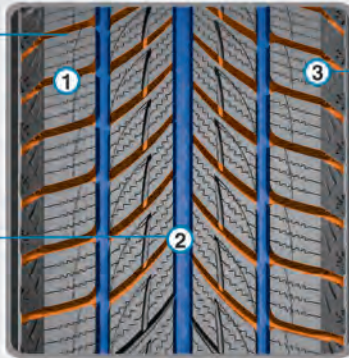


WINTER SPORT TIRE NON-STUDDABLE

CHARACTERS

Handling Performance On Ice And Snow Road

Interval arranged lateral groove design in carter part increase grip ability on snow/ice terrain, guarantees safe handling performance.



Drainage Performance On Ice And Snow Road

Wide and straight longitudinal groove design improves performance on wet ground.

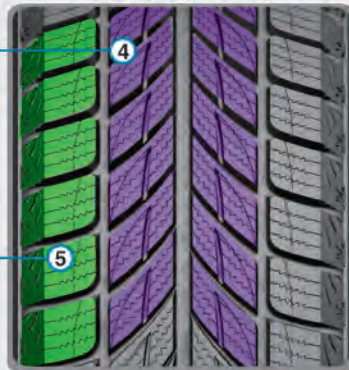


Combination Of Safety And Fasion Design

The fine snow-shaped design on the shoulder part combines the fasionable appearance and the driving safety by increasing the friction froce from the shoulder area.

Breaking Performance On Ice And Snow Road

Special studless tread compound greatly improves braking performance in winter.



Low Noise Performance On Ice And Snow Road

Optimized pitch arrangement design lower the noise to minimum level.

Performance Test

- HW505
- OTHERS



SPECIFICATION

SIZE	RIM SIZE	LI/SS	XL
20"			
SERIE 45			
255/45R20	20	105T	XL
275/45R20	20	110H	XL
SERIE 55			
* 235/55R20	20	102T	
* 255/55R20	20	107T	
19"			
SERIE 45			
* 255/45R19	19	100T	
SERIE 50			
* 235/50R19	19	99T	
255/50R19	19	107T	XL
SERIE 55			
235/55R19	19	105T	XL
* 255/55R19	19	107T	
18"			
SERIE 45			
225/45R18	18	95T	XL
245/45R18	18	96T	
SERIE 55			
235/55R18	18	104T	XL
255/55R18	18	109T	XL

SIZE	RIM SIZE	LI/SS	XL
17"			
SERIE 45			
215/45R17	17	91H	XL
225/45R17	17	94H	XL
o 225/45R17	17	94T/H	XL
235/45R17	17	97H	XL
255/45R17	17	102T	XL
215/45R17	17	91T	XL
235/45R17	17	97T	XL
225/45R17	17	94T	XL
SERIE 50			
205/50R17	17	93H	XL
225/50R17	17	94H	
225/50R17	17	94T	
205/50R17	17	93T	XL
SERIE 55			
225/55R17	17	97H	
235/55R17	17	99H	
235/55R17	17	99T	
225/55R17	17	97T	

o :studdable

*:New product under development



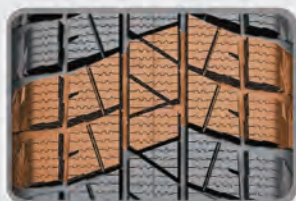
HW507

WINTER SUV TIRE NON-STUDDABLE

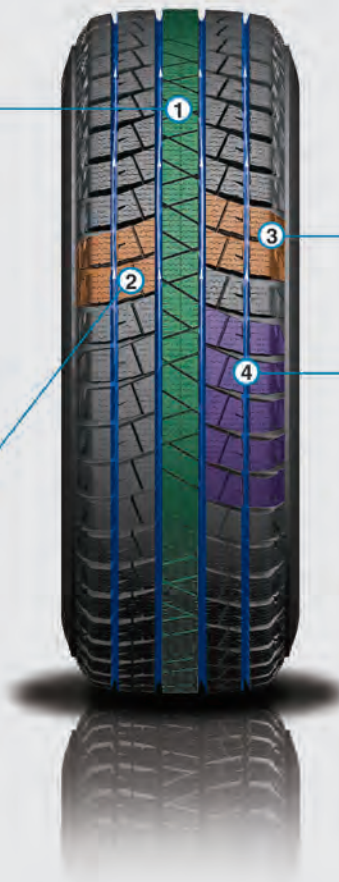
CHARACTERS



① Central rib pattern and multi-sipe design makes excellent braking and steering performance on snow/ice terrain.



② Wide tread design increase the contacting area with the ground, guarantees the driving safety on snow/ice terrain.



③ Combination of longitudinal and lateral grooves to ensure the best water drainage performance.



④ Excellent pitch arrangement and special tread compound, disperses the noise and makes driving more comfortable.

Performance Test



SPECIFICATION

SIZE	RIM SIZE	LI/SS	XL
20"			
SERIE 55			
* 235/55R20	20	102T	
* 255/55R20	20	107T	
19"			
SERIE 45			
* 255/45R19	19	100T	
SERIE 50			
* 235/50R19	19	99T	
SERIE 55			
* 255/55R19	19	107T	
18"			
SERIE 60			
235/60R18	18	103T	
17"			
SERIE 60			
* 215/60R17	17	96T	

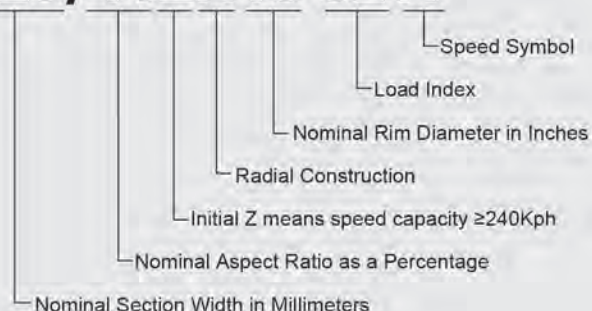
SIZE	RIM SIZE	LI/SS	XL
17"			
SERIE 60			
225/60R17	17	99T	
SERIE 65			
235/65R17	17	108T	XL
265/65R17	17	112Q	
16"			
SERIE 65			
215/65R16	16	98T	
SERIE 70			
215/70R16	16	100Q	
235/70R16	16	106Q	
265/70R16	16	112Q	
15"			
SERIE 75			
235/75R15	15	109Q	XL

*: New product under development

TECHNICAL KNOWLEDGE



225/40ZR18 92W



$$\text{Aspect ratio (\%)} = \frac{\text{Section Height}}{\text{Section Width}} \times 100$$

OTHER MARKINGS:

P - as part of the tyre size designation (e.g., P265/70R15) used to indicate tyres intended for services on passenger cars.

LT - as part of the tyre size designation (e.g., LT235/75R15) used to indicate the tyres are intended for light truck vehicles.

M+S - letters used to indicate a tyre suitable for Mud and Snow and/or All Season usage.

XI - as part of the tyre size designation (e.g., 225/55R16 XL) used to indicate the tyre can carry more loads as the maximum inflation pressure and load are greater than a standard load version. (Also could be called REINFORCED).

ZR - as part of the tyre size designation (e.g., 225/45ZR17 XL) used to indicate the tyre has a maximum speed capability over 240Kilometer/hour.

SPEED RATING

The speed symbol refers to the maximum speed capabilities of the tyre.

It is only valid for tyre that are properly inflated and loaded within their assigned load index.

Speed Symbol	Q	R	S	T	H	V	W	Y	ZR
Maximum Speed (km/hr)	160	170	180	190	210	240	270	300	240 & above

LOAD INDEX

The load index is the maximum load-carrying capacity of a tyre under a specific condition.

Load Index	KG	LBS
70	335	739
71	345	761
72	355	783
73	365	805
74	375	827
75	387	853
76	400	882
77	412	908
78	425	937
79	437	963
80	450	992
81	462	1019
82	475	1047
83	487	1074
84	500	1102
85	515	1135
86	530	1168
87	545	1202
88	560	1235
89	580	1279
90	600	1323
91	615	1356
92	630	1389
93	650	1433
94	670	1477
95	690	1521
96	710	1565
97	730	1609
98	750	1653
99	775	1709

Load Index	KG	LBS
100	800	1764
101	825	1819
102	850	1874
103	875	1929
104	900	1984
105	925	2039
106	950	2094
107	975	2149
108	1000	2205
109	1030	2271
110	1060	2337
111	1090	2403
112	1120	2469
113	1150	2535
114	1180	2601
115	1215	2679
116	1250	2756
117	1285	2833
118	1320	2910
119	1360	2998
120	1400	3086
121	1450	3197
122	1500	3307
123	1550	3417
124	1600	3527
125	1650	3638
126	1700	3748
127	1750	3858
128	1800	3968
129	1850	4079

ADD: Dawang Industry Park, Dongying
City, Shandong Province, China.
P.C.:257335
TEL:+86-546-6872366 +86-532-86685185
FAX:+86-532-86685195
Email:htg-info@hengyugroup.com



www.hengyugroup.com

