

# 2014 PRODUCT GUIDE

## Passenger Car Tires



PLANT LAYOUT OF HENGYU SCIENCE&TECHNOLOGY CO.,LTD

## GROUP INTRODUCTION

Hengyu Technology Group is a diversified enterprise located in Dongying City, Shandong Province, China. It has been focusing on various kinds of tire manufacturing including PCR tire, TBR tire, Bias OTR tire and Bias Truck & Bus tire since its establishment. Up to now, the business fields have been expanded to Alloy Wheel, Lithium Battery, Real Estate and some other while maintaining its focus on tire manufacturing and sales.

Through cooperation with the major universities including Tsinghua University, Beijing University of Chemical Technology and The Science & Technology University of Qingdao, the enterprise is able to keep close pace of the technology creation, compound improvement, developing trends of the whole tire industry, etc..

The group has successfully obtained many certificates including ISO9001, TS16949, GB/T24001, GB/T28001, 3C, DOT, ECE, REACH, LABEL, INMETRO, GCC, SONCAP, SNI, etc..

With its high quality and strict quality and production management, the group has established strategic partnership with large truck manufacturers like SINOTRUCK, FAW, FOTON, Dongfeng Liuqi Motors, JAC, etc..

As of today, the annual capacity is 12 million units for PCR tire, 1.2 million units for TBR tire, respectively. By the end of 2015, the group will achieve 30 million units for PCR tire, 3 million units for TBR tire, 50 million m<sup>2</sup> for conveyor belt and 6 billion Ah for Lithium Ion battery.

The group will insist on diversified development and win-win business for its future development, maintaining its awareness of the market demands, providing high quality products to its consumers, bringing value to the whole society, creating a world class enterprise.



Headway PCR tire

**HU901**

Driving with Passion



**HU901** Ultra High Performance



**CHARACTERS**

- 1. **Four main rib design:** Better avoiding slippery.
- 2. **Big pattern design:** Greatly improving cornering stability at high speed.
- 3. **Asymmetric tread design:** Offers better sporting performance.
- 4. **Straight Lined central rib design:** Maneuverability is highly improved.



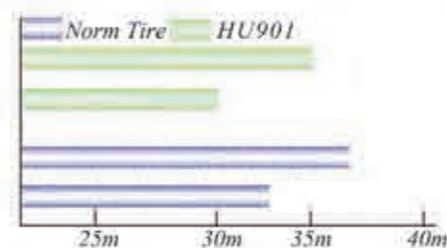
**TIRE CONSTRUCTION**

- 1. Pitched pattern design reduces driving noise.
- 2. Special compound improves driving and gripping performance while maintaining excellent heat-resistant and wear-resistant ability.
- 3. All-new jointless protection layer improves the durability and braking performance, offers even landing and safe driving.
- 4. High strength steel belt reduces rolling resistance. To be more fuel saving and environmental while maintaining the driving safety.



Best footprint shape simulated by computer offers excellent braking performance

**BRAKING TEST**



**ULTRA HIGH PERFORMANCE TIRE,  
RIGHT CHOICE FOR LUXURY CARS**

**HU901**



**SPECIFICATION**

SERIE	SIZE	RIM SIZE	LI/SS
<b>SERIE 30</b>			
<b>20"</b>			
	225/30 ZR 20	20	85 W
<b>SERIE 35</b>			
<b>18"</b>			
	215/35 ZR 18	18	80 W
	215/35 ZR 18	18	84 W
<b>19"</b>			
	245/35 ZR 19	19	89 W
	245/35 ZR 19	19	93 W
	245/35 ZR 19	19	93 W
	245/35 ZR 19	19	89 W
	235/35 ZR 19	19	87 W
	235/35 ZR 19	19	91 W
	235/35 ZR 19	19	91 W
<b>20"</b>			
	315/35 ZR 20	20	106 W
	315/35 ZR 20	20	110 W
	255/35 ZR 20	20	93 W
	245/35 ZR 20	20	91 W
	245/35 ZR 20	20	95 W
	225/35 ZR 20	20	90 W
	225/35 ZR 20	20	90 W
<b>SERIE 40</b>			
<b>17"</b>			
	215/40 ZR 17	17	87 W
	205/40 ZR 17	17	84 W
	205/40 ZR 17	17	80 W
	205/40 ZR 17	17	84 W
	205/40 ZR 17	17	80 W
<b>18"</b>			
	245/40 ZR 18	18	97 W
	245/40 ZR 18	18	97 W
	235/40 ZR 18	18	91 W

SERIE	SIZE	RIM SIZE	LI/SS
<b>SERIE 40</b>			
<b>18"</b>			
	235/40 ZR 18	18	95 W
	235/40 ZR 18	18	95 W
	225/40 ZR 18	18	88 W
	225/40 ZR 18	18	92 W
	225/40 ZR 18	18	92 W
	225/40 ZR 18	18	88 W
	215/40 ZR 18	18	85 W
	215/40 ZR 18	18	89 W
<b>19"</b>			
	275/40 ZR 19	19	101 W
<b>20"</b>			
	275/40 ZR 20	20	106 W
<b>SERIE 45</b>			
<b>17"</b>			
	245/45 ZR 17	17	95 W
	245/45 ZR 17	17	99 W
	245/45 ZR 17	17	99 W
	245/45 ZR 17	17	95 W
	235/45 ZR 17	17	94 W
	235/45 ZR 17	17	97 W
	235/45 ZR 17	17	97 W
	235/45 ZR 17	17	94 W
	225/45 ZR 17	17	91 W
	225/45 ZR 17	17	94 W
	225/45 ZR 17	17	94 W
	225/45 ZR 17	17	91 W
	215/45 ZR 17	17	87 W
	215/45 ZR 17	17	91 W
	215/45 ZR 17	17	91 W
	215/45 ZR 17	17	87 W
	205/45 ZR 17	17	84 W
	205/45 ZR 17	17	88 W

SERIE	SIZE	RIM SIZE	LI/SS
<b>SERIE 45</b>			
<b>17"</b>			
	205/45 ZR 17	17	88 W
	205/45 ZR 17	17	84 W
<b>18"</b>			
	255/45 ZR 18	18	99 W
	245/45 ZR 18	18	96 W
	245/45 ZR 18	18	100 W
	245/45 ZR 18	18	100 W
	245/45 ZR 18	18	96 W
	235/45 ZR 18	18	94 W
	235/45 ZR 18	18	98 W
	235/45 ZR 18	18	94 W
	225/45 ZR 18	18	91 W
	225/45 ZR 18	18	95 W
	225/45 ZR 18	18	95 W
	225/45 ZR 18	18	91 W
<b>20"</b>			
	275/45 ZR 20	20	106 W
	275/45 ZR 20	20	110 W
	275/45 ZR 20	20	110 W
	275/45 ZR 20	20	106 W
<b>SERIE 50</b>			
<b>16"</b>			
	225/50 ZR 16	16	92 W
	225/50 ZR 16	16	92 W
	225/50 ZR 16	16	92 W
	205/50 ZR 16	16	91 W
	205/50 ZR 16	16	87 W
	205/50 ZR 16	16	87 W
	205/50 ZR 16	16	91 W
	205/50 ZR 16	16	91 W

SERIE	SIZE	RIM SIZE	LI/SS
<b>SERIE 50</b>			
<b>16"</b>			
	205/50 ZR 16	16	87 W
<b>17"</b>			
	225/50 ZR 17	17	94 W
	205/50 ZR 17	17	89 W
	205/50 ZR 17	17	93 W
<b>19"</b>			
	265/50 ZR 19	19	106 W
	265/50 ZR 19	19	110 W
<b>SERIE 55</b>			
<b>16"</b>			
	225/55 ZR 16	16	95 W
	225/55 ZR 16	16	99 W
	225/55 ZR 16	16	95 W
	215/55 ZR 16	16	93 W
	215/55 ZR 16	16	97 W
	215/55 ZR 16	16	93 W
	205/55 R 16	16	91 V
	205/55 R 16	16	94 W
	205/55 R 16	16	94 W
	205/55 R 16	16	91 V
	205/55 R 16	16	91 V
	205/55 R 16	16	94 W
<b>17"</b>			
	225/55 ZR 17	17	97 W
	225/55 ZR 17	17	101 W
	225/55 ZR 17	17	101 W
	215/55 ZR 17	17	94 W
	215/55 ZR 17	17	94 W
<b>18"</b>			
	235/55 ZR 18	18	104 W

Headway PCR tire

**HH301**

Driving with Passion



## HH301 High Performance

### CHARACTERS



#### Safe Driving

4 wide longitudinal grooves design greatly improves water drainage and driving stability on slippery roads. Continuous straight center rib design provides optimized ground contacting area, guarantees better driving safety. Widened shoulder tread design increases contacting area, providing better driving stability and reliability.



#### Excellent Silent Comfort

Optimized variable pitch sequence design disperses road noise and reduces vibration, driving comfort is highly improved. Symmetrical pattern design and small notched design on the tread increases the friction between the tire and the ground, driving comfort is significantly improved.



#### Free Driving

Lateral "S" shaped groove ensures better wet grip.



#### Artistic Design

Size engraving in the central rib reveals the stylish design.



**PERFECT COMBINATION OF COMFORT AND HANDLING FOR MIDDLE CLASS CARS**

**HH301**



**SPECIFICATION**

SERIE	SIZE	RIM SIZE	LI/SS
<b>SERIE 50</b>			
<b>15"</b>			
	195/50 R 15	15	82 V
	195/50 R 15	15	82 H
	195/50 R 15	15	82 H
<b>SERIE 60</b>			
<b>15"</b>			
	185/55 R 15	15	82 V
	185/55 R 15	15	82 V
	195/55 R 15	15	85 V
	195/55 R 15	15	85 V
	195/55 R 15	15	85 V
<b>16"</b>			
	205/55 R 16	16	90 V
	205/55 R 16	16	94 W
	205/55 R 16	16	91 V
	205/55 R 16	16	91 V
	205/55 R 16	16	91 V
	205/55 R 16	16	90 W
	205/55 R 16	16	91 V
	205/55 R 16	16	94 W
	215/55 R 16	16	93 V
	215/55 R 16	16	93 V
<b>SERIE 60</b>			
<b>14"</b>			
	185/60 R 14	14	82 T
	185/60 R 14	14	82 H

SERIE	SIZE	RIM SIZE	LI/SS
<b>SERIE60</b>			
<b>14"</b>			
	185/60 R 14	14	82 T
	185/60 R 14	14	82 H
	195/60 R 14	14	86 H
	195/60 R 14	14	86 H
<b>15"</b>			
	185/60 R 15	15	84 H
	185/60 R 15	15	84 H
	195/60 R 15	15	88 V
	195/60 R 15	15	88 H
	195/60 R 15	15	88 V
	195/60 R 15	15	88 V
	205/60 R 15	15	91 V
	205/60 R 15	15	91 H
	205/60 R 15	15	91 V
<b>16"</b>			
	205/60 R 16	16	92 V
	205/60 R 16	16	92 H
	205/60 R 16	16	92 V
	205/60 R 16	16	92 V
	215/60 R 16	16	95 V
	215/60 R 16	16	95 H
	215/60 R 16	16	95 V
	215/60 R 16	16	95 H
	225/60 R 16	16	98 H
	225/60 R 16	16	98 H

SERIE	SIZE	RIM SIZE	LI/SS
<b>SERIE 60</b>			
<b>16"</b>			
	225/60 R 16	16	98 H
	235/60 R 16	16	100 V
	235/60 R 16	16	100 V
	235/60 R 16	16	100 H
<b>17"</b>			
	225/60 R 17	17	99 T
	225/60 R 17	17	99 T
<b>SERIE 65</b>			
<b>14"</b>			
	175/65 R 14	14	82 H
	175/65 R 14	14	82 H
	185/65 R 14	14	86 H
	185/65 R 14	14	86 H
<b>15"</b>			
	185/65 R 15	15	88 H
	185/65 R 15	15	88 H
	185/65 R 15	15	88 H
	195/65 R 15	15	91 V
	195/65 R 15	15	91 H
	195/65 R 15	15	91 V
	195/65 R 15	15	91 V
	205/65 R 15	15	94 V
	205/65 R 15	15	94 V
	205/65 R 15	15	94 H
	205/65 R 15	15	94 V

SERIE	SIZE	RIM SIZE	LI/SS
<b>SERIE65</b>			
<b>15"</b>			
	215/65 R 15	15	96 H
	215/65 R 15	15	96 H
<b>16"</b>			
	215/65 R 16	16	98 H
	215/65 R 16	16	98 T
	215/65 R 16	16	98 H
<b>SERIE 70</b>			
<b>13"</b>			
	175/70 R 13	13	82 T
<b>14"</b>			
	175/70 R 14	14	84 H
	175/70 R 14	14	84 H
	185/70 R 14	14	88 T
	185/70 R 14	14	88 T
	185/70 R 14	14	88 H
	195/70 R 14	14	91 T
	195/70 R 14	14	91 T
	195/70 R 14	14	91 H
<b>15"</b>			
	205/70 R 15	15	96 T
	205/70 R 15	15	96 T
	205/70 R 15	15	96 H
	215/70 R 15	15	98 T
	215/70 R 15	15	98 T
	215/70 R 15	15	98 H

Headway PCR tire

# HH201

Enjoying Comfort



## HH201 High Performance

### CHARACTERS



- ▶ Perfect optimized variable pitch designed ensures good traction and braking ability.
- ▶ Computer-optimized variable pitch sequence prevents abnormal shoulder wear.
- ▶ "S" shaped notched design reduces noise, improving driving comfort.

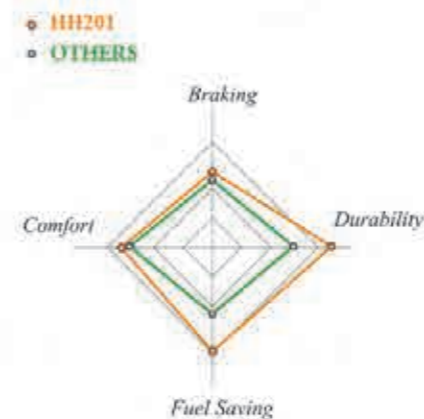


- ▶ Four main rib design reduces water film effect, leading to better handling on wet ground.
- ▶ Streamlined lateral groove design improves better anti-slipping performance.

### SPECIFICATION

SERIE	SIZE	RIM SIZE	LI/SS
<b>SERIE 65</b>			
<b>14"</b>			
	175/65R14	14	82H
	185/65R14	14	86H
<b>15"</b>			
	195/65R15	15	91V
	195/65R15	15	91H
	195/65R15	15	91V
<b>SERIE 70</b>			
<b>14"</b>			
	185/70R14	14	88H
	195/70R14	14	91T
	205/70R14	14	98T
	175/70R14	14	84T
	205/70R14	14	98H
	195/70R14	14	91H
	175/70R14	14	84H
<b>SERIE 80</b>			
<b>14"</b>			
	155/80R13	13	79T

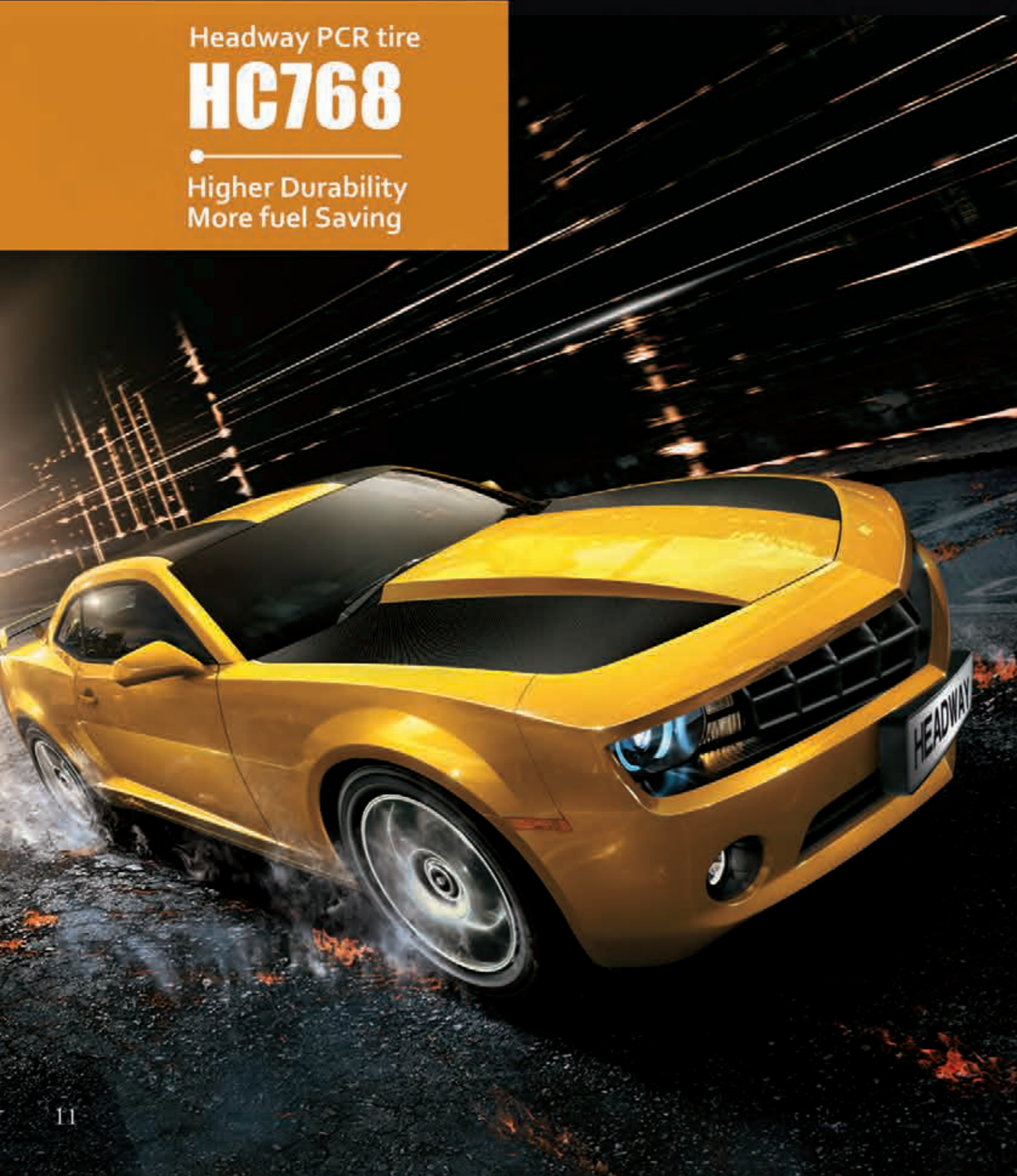
### PERFORMANCE TEST



Headway PCR tire

# HC768

Higher Durability  
More fuel Saving



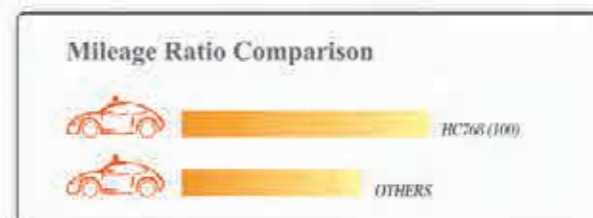
## HC768 high Performance

### CHARACTERS



1. Water drainage performance
2. Anti Wear  
Optimized tread rubber compound ensures superior wear resistant performance and 25% higher mileage.
3. Comfort  
Optimized variable pitch sequence design disperses road noise effectively.
4. Handling  
Two center rib design improves straight line stability.

### PERFORMANCE TEST



### SPECIFICATION

SERIE	SIZE	RIM SIZE	LI/SS
<b>SERIE 60</b>			
<b>14"</b>			
	185/60 R 14	14	82 T
	185/60 R 14	14	82 H
	185/60 R 14	14	82 T
	195/60 R 14	14	86 H
<b>SERIE 70</b>			
<b>13"</b>			
	165/70 R 13	13	79 T
	175/70 R 13	13	82 T
	175/70 R 13	13	82 H
<b>14"</b>			
	165/70 R 14	14	81 T





Headway PCR tire

**HR701**

Voyage of Discovery



## HR701 Sport Utility Vehicle

### CHARACTERS



#### Tread Pattern Design

Big tread pattern design increases the contacting area with the ground, offering excellent handling and braking performance on all terrain and all weather conditions.



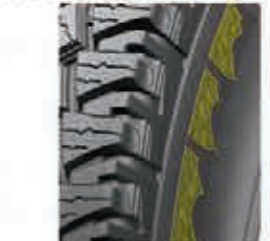
#### Open Shoulder Design

Heat release ability is improved by open shoulder design, tire durability and driving safety is greatly enhanced.



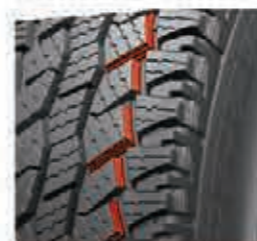
#### Durability

Deep waved grooves improve the durability of the tread and wet grip performance on all terrain road conditions.



#### Appearance Design

Exquisite sidewall pattern design represents the fashion and uniqueness of the tire.



#### "Pop-up" Design

Stepped groove design avoids small stones embedded into tire patterns damaging the tire, better guarantees the driving stability.



### APPLICABLE CONDITIONS

Paved roads & All Terrain roads including concrete roads, asphalt roads, mountain roads, etc..

### SPECIFICATION

SERIE	SIZE	RIM SIZE	LI/SS
<b>SERIE 65</b>			
15"			
	205/65 R 15	15	4 94 H
<b>SERIE 65</b>			
15"			
	205/70 R 15	15	4 96 T
<b>SERIE 75</b>			
15"			
	LT215/75 R 15	15	6 100/97 R
	LT215/75 R 15	15	6 100/97 Q

SERIE	SIZE	RIM SIZE	LI/SS
<b>SERIE 75</b>			
15"			
	LT235/75 R 15	15	6 104/101 R
	LT245/75 R 16	16	10 120/116 Q
<b>SERIE 100</b>			
15"			
	31X10.50 R 15	15	6 109 R
	31X10.50 R 15	15	6 109 R
	31X10.50 R 15	15	6 109 Q
	31X10.50 R 15	15	6 109 S

Headway PCR tire

# HR801

Super Comfort for  
City Driving



## HR801 Sport Utility Vehicle

### CHARACTERS



#### Excellent Drainage Performance

4 longitudinal grooves interconnecting with the edge grooves offers better drainage performance, safety driving under rainy weather is further guaranteed consequently.



#### Durability

Small notched design on tread patterns improves the durability of the tire and the grip performance on wet ground.



#### "Pop-up" Design

Stepped groove design avoids small stones embedded into tire patterns damaging the tire, better guarantees the driving stability



#### Optimized Pattern Design

5 variable pitch sequence reduces the pattern noise effectively, driving comfort is greatly improved.



**ESPECIALLY FOR HIGHWAY SUV**

**HR801**



**TIRE CONSTRUCTION**

1. Jointless and high-strength nylon covering layer.
2. High tension steel belt.
3. Dual carcass construction.
4. Jointless and high-strength bead steel wire.

**APPLICABLE CONDITIONS**

Paved Roads & Highway

**SPECIFICATION**

SERIE	SIZE	RIM SIZE	LI/SS
<b>SERIE 55</b>			
<b>17"</b>			
	235/55 R 17	17	99 H
	235/55 R 17	17	99 S
<b>SERIE 60</b>			
<b>17"</b>			
	225/60 R 17	17	99 S
	225/60 R 17	17	99 H
<b>SERIE 65</b>			
<b>16"</b>			
	215/65 R 16	16	98 T
	215/65 R 16	16	98 H
<b>17"</b>			
	225/65 R 17	17	102 S
	225/65 R 17	17	102 H

SERIE	SIZE	RIM SIZE	LI/SS
<b>SERIE65</b>			
<b>17"</b>			
	235/65 R 17	17	104 S
	235/65 R 17	17	104 H
	245/65 R 17	17	107 T
<b>SERIE 65</b>			
<b>15"</b>			
	225/70 R 15	15	100 S
	225/70 R 15	15	100 H
<b>SERIE 75</b>			
<b>75"</b>			
	215/75 R 15	15	100 S
	215/75 R 15	15	100 H
	235/75 R 15	15	105 S
	235/75 R 15	15	105 H

Headway LTR tire

# HR601

Your Economic Solution  
For Rural Transportation



## HR601 LTR Tires

### CHARACTERS



#### 1. Enhanced Carcass Design

Reinforced carcass design guarantees heavy load ability.

#### 2. Excellent Drainage Performance

"之" shaped groove design provides better drainage Performance, making the pattern more applicable for rural road conditions.

#### 3. More Wear-Resistant & More Economic

Wide tread pattern design improves the wear-resistant performance. All new compound offers lower fuel consumption and guarantees rural driving safety. rural road conditions.



#### 4. "Pop-up" Design

Stepped groove design avoids small stones embedded into tire patterns.



#### ▶ Economic & Durable

Widened tread design and special tread compound improves driving stability and wear-resistant performance.

#### ▶ Great Adaptability

Longitudinal groove design and lateral pattern design offers better grip ability on wet ground, applicable perfectly for rural transportation needs.

#### ▶ Travel Free

Three longitudinal deepened grooves provides outstanding drainage performance on wet ground.

#### ▶ Heavy Load & Anti-wear

Reinforced carcass and unique tread compound design guarantees heavy load ability.

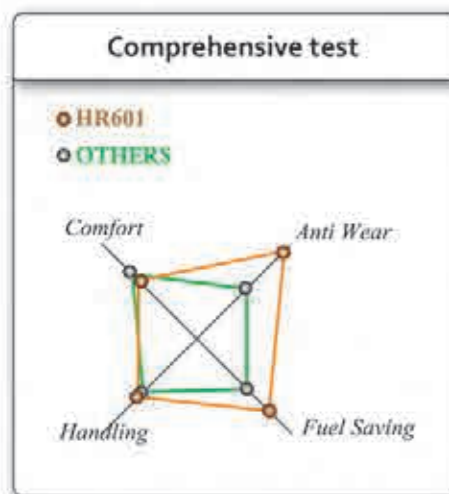


# COMMERCIAL TIRE

## HR601



### PERFORMANCE TEST



### SPECIFICATION

SERIE	SIZE	RIM SIZE	LI/SS
<b>SERIE 65</b>			
16"			
	225/65 R 16C	16	8 112/110 Q
<b>SERIE 70</b>			
14"			
	175/70 R 14C	14	8 95/93 Q
15"			
	195/70 R 15C	15	6 93/90 R
	195/70 R 15C(Q)	15	6 93/90 Q
	225/70 R 15C	15	6 100/97 Q
<b>SERIE 75</b>			
16"			
	185/75 R 16C	16	8 100/97 R

SERIE	SIZE	RIM SIZE	LI/SS
<b>SERIE 80</b>			
13"			
	155 R 13C	13	8 90/88 P
	165 R 13C	13	8 94/93 P
14"			
	185 R 14C	14	8 102/100 Q
	185 R 14C	14	8 102/100 R
	195 R 14C	14	8 106/104 Q
	195 R 14C	14	8 106/104 R
	LT185 R 14R	14	8 102/100 R
	LT195 R 14R	14	8 106/104 R

Headway LTR tire

# HR602

Higher Durability  
More Fuel Saving



## HR602 LTR Tires

### CHARACTERS



- ▶ Excellent Anti-wear Performance.
- ▶ Extra longer mileage.
- ▶ Prevents abnormal shoulder wear.

### SPECIFICATION

SERIE	SIZE	RIM SIZE	LI/SS
<b>SERIE 100</b>			
<b>16"</b>			
	6.50 R 16	16	10 107/102 L
	7.00 R 16	16	12 115/110 L
	7.00 R 16	16	10 111/107 L
	7.00 R 16	16	12 115/110 L
	7.50 R 16LT	16	14 122/118 L
	7.50 R 16LT	16	14 122/118 L



Headway PCR tire

# HR802

Your Economic Solution  
For Rural Transportation



## HR802 LTR Tire

### CHARACTERS



- ▶ Big angle pattern block and 4 main rib designs ensures effective water drainage and safer driving on wet surface.
- ▶ Solid shoulder pattern design provides accurate maneuverability on direction and braking.
- ▶ Optimized sequence design reduces tire noises effectively.



### SPECIFICATION

SERIE	SIZE	RIM SIZE	LI/SS	SERIE	SIZE	RIM SIZE	LI/SS
<b>SERIE 60</b>				<b>SERIE 70</b>			
<b>16"</b>				<b>16"</b>			
	P215/60 R 16	16	94 T		P265/70 R 16	16	112 H
<b>17"</b>				<b>17"</b>			
	P245/65 R 17	17	107 H		P245/70 R 17	17	110 H
	P255/65 R 17	17	110 H		P255/70 R 17	17	112 H
	P265/65 R 17	17	112 H		P265/70 R 17	17	115 H
<b>SERIE 70</b>				<b>SERIE 75</b>			
<b>16"</b>				<b>15"</b>			
	P235/70 R 16	16	106 H		P235/75 R 15	15	105 H
	P235/70 R 16	16	106 H	<b>16"</b>			
	P245/70 R 16	16	107 H		P245/75 R 16	16	111 H
	P255/70 R 16	16	111 H		P265/75 R 16	16	116 H

Headway PCR tire

**HW501**



Smart & Safe Choice for Your Winter



## HW501 Winter Tires

### CHARACTERS



#### Tread Pattern Design

Perfect braking & grip power on snow/ice road conditions provided by directional pattern and studdable design.



#### Super Braking Power

6% widened tread design offers even landing area, improves braking and wear resistant performance on snow/ice terrain.



#### Super Silica Compound

All new winter silica compounded tread provides super grip power on wet ground and less rolling resistance.



#### Excellent Drainage Performance

"V" groove design delivers perfect water drainage performance when snow melts, offers safer, more stable driving terrain road conditions.

### TIRE CONSTRUCTION



#### Tire Construction

1. Jointless and high-strength nylon covering layer.
2. High tension steel belt.
3. Dual carcass construction.
4. Jointless and high-strength bead steel wire.

### PERFORMANCE TEST





**PERFECT BRAKING, EXCELLENT HANDLING.  
-SAFEGUARD FOR YOUR WINTER.**

**HW501**



**SPECIFICATION**

SERIE	SIZE	RIM SIZE	LI/SS
<b>SERIE 50</b>			
16"			
	225/50 R 16	16	92 T
	225/50 R 16	16	92 T
<b>SERIE 55</b>			
15"			
	195/55 R 15	15	85 T
	195/55 R 15	15	85 T
	195/55 R 15	15	85 T
16"			
	205/55 R 16	16	91 T
	205/55 R 16	16	91 T
	205/55 R 16	16	91 T
	205/55 R 16	16	91 T
	215/55 R 16	16	93 T
	215/55 R 16	16	93 T
	225/55 R 16	16	95 T
	225/55 R 16	16	95 T
	225/55 R 16	16	95 T
<b>SERIE 60</b>			
14"			
	185/60 R 14	14	82 T

SERIE	SIZE	RIM SIZE	LI/SS
<b>SERIE60</b>			
14"			
	185/60 R 14	14	82 T
15"			
	185/60 R 15	15	84 T
	185/60 R 15	15	84 T
	195/60 R 15	15	88 T
	195/60 R 15	15	88 T
	195/60 R 15	15	88 T
	205/60 R 15	15	91 T
	205/60 R 15	15	91 T
	215/60 R 15	15	94 T
	215/60 R 15	15	94 T
	205/60 R 16	16	92 T
	205/60 R 16	16	92 T
	215/60 R 16	16	95 T
	215/60 R 16	16	95 T
	215/60 R 16	16	95 T
	225/60 R 16	16	98 T
	225/60 R 16	16	98 T
	225/60 R 16	16	98 T

SERIE	SIZE	RIM SIZE	LI/SS
<b>SERIE 65</b>			
14"			
	175/65 R 14	14	82 T
	175/65 R 14	14	82 T
	175/65 R 14	14	82 T
	185/65 R 14	14	86 T
	185/65 R 14	14	86 T
	185/65 R 14	14	86 T
15"			
	185/65 R 15	15	88 T
	185/65 R 15	15	88 T
	195/65 R 15	15	91 T
	195/65 R 15	15	91 T
	195/65 R 15	15	91 T
	195/65 R 15	15	91 T
	205/65 R 15	15	94 T
	205/65 R 15	15	94 T
	205/65 R 15	15	94 T
16"			
	215/65 R 16	16	98 T
<b>SERIE 70</b>			
13"			
	175/70 R 13	13	82 T

SERIE	SIZE	RIM SIZE	LI/SS
<b>SERIE70</b>			
13"			
	175/70 R 13	13	82 T
	175/70 R 13	13	82 T
14"			
	185/70 R 14	14	88 T
	185/70 R 14	14	88 T
	185/70 R 14	14	88 T
	195/70 R 14	14	91 T
	195/70 R 14	14	91 T
	195/70 R 14	14	91 T
15"			
	205/70 R 15	15	96 T
	215/70 R 15	15	98 T
	215/70 R 15	15	98 T
	215/70 R 15	15	98 T
<b>SERIE 80</b>			
13"			
	155/80 R 13	13	79 T

Headway PCR tire

**HW507** ❄️

Smart & Safe Choice for Your Winter



## HW507 Winter Tires

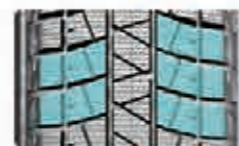
### CHARACTERS



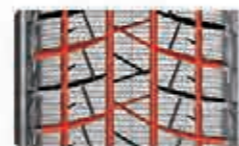
Central rib pattern and multi-sipe design makes excellent braking and steering performance on snow/ice terrain.



Wide tread design increase the contacting area with the ground, guarantees the driving safety on snow/ice terrain.



Excellent pitch arrangement and special tread compound, disperses the noise and makes driving more comfortable.



4 longitudinal grooves and multi lateral pattern guarantee the super drainage performance.



### SPECIFICATION

SERIE	SIZE	RIM SIZE	LI/SS	SERIE	SIZE	RIM SIZE	LI/SS
<b>SERIE 60</b>				<b>SERIE 60</b>			
<b>17"</b>				<b>17"</b>			
	225/60 R 17	17	99 T		225/65 R 17	17	102 T
	225/60 R 17	17	99 T		265/65 R 17	17	112 Q
<b>18"</b>					225/65 R 17	17	102 T
	235/60 R 18	18	103 T	<b>SERIE 70</b>			
	235/60 R 18	18	103 T	<b>16"</b>			
<b>SERIE 65</b>					215/70 R 16	16	100 Q
<b>16"</b>					235/70 R 16	16	106 Q
	215/65 R 16	16	98 T		265/70 R 16	16	112 Q
<b>17"</b>				<b>SERIE 75</b>			
	225/65 R 17	17	102 T	<b>15"</b>			
	235/65 R 17	17	108 T		235/75 R 15	15	109 Q

Headway PCR tire  
**HW505**  
 Smart & Safe Choice for  
 Your Winter



## HW505 Winter Tires

### CHARACTERS



Wide and straight longitudinal groove design improves performance on wet ground.



Interval arranged lateral groove design in carter part increase grip ability on snow/ice terrain, guarantees safe handling performance.



Special studless tread compound greatly improves braking performance in winter.



Optimized pitch arrangement design lower the noise to minimum level.

### SPECIFICATION

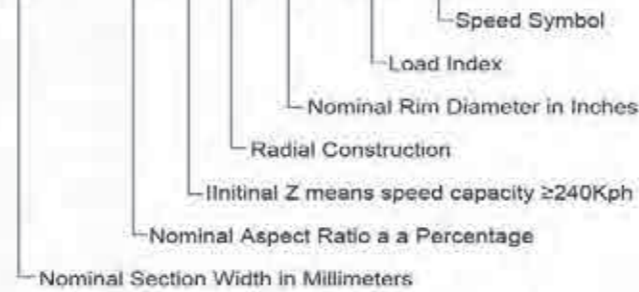
SERIE	SIZE	RIM SIZE	LI/SS
<b>SERIE 45</b>			
<b>17"</b>			
	215/45 R 17	17	91 H
	225/45 R 17	17	94 H
	235/45 R 17	17	97 H
	255/45 R 17	17	102 T
	215/45 R 17	17	91 T
	235/45 R 17	17	97 T
	225/45 R 17	17	94 T
	235/45 R 17	17	93 T
	215/45 R 17	17	87 H
<b>18"</b>			
	225/45 R 18	18	95 T
	245/45 R 18	18	96 T
<b>20"</b>			
	255/45 R 20	20	105 T
	275/45 R 20	20	110 H
<b>SERIE 50</b>			
<b>17"</b>			
	205/50 R 17	17	93 H

SERIE	SIZE	RIM SIZE	LI/SS
<b>SERIE 50</b>			
<b>17"</b>			
	225/50 R 17	17	94 H
	225/50 R 17	17	94 T
	205/50 R 17	17	93 T
<b>19"</b>			
	255/50 R 19	19	107 T
<b>SERIE 55</b>			
<b>17"</b>			
	225/55 R 17	17	97 H
	235/55 R 17	17	99 H
	235/55 R 17	17	99 T
	225/55 R 17	17	97 T
<b>18"</b>			
	235/55 R 18	18	104 T
	255/55 R 18	18	109 T
<b>19"</b>			
	235/55 R 19	19	105 T

## TECHNICAL KNOWLEDGE



**225/40ZR18 92W**



$$\text{Aspect ratio (\%)} = \frac{\text{Section Height}}{\text{Section Width}} \times 100$$

### OTHER MARKINGS:

P - as part of the tyre size designation (e.g., P265/70R15) used to indicate tyres intended for services on passenger cars.

LT - as part of the tyre size designation (e.g., LT235/75R15) used to indicate the tyres are intended for light truck vehicles.

M+S - letters used to indicate a tyre suitable for Mud and Snow and/or All Season usage.

XI - as part of the tyre size designation (e.g., 225/55R16 XL) used to indicate the tyre can carry more loads as the maximum inflation pressure and load are greater than a standard load version. (Also could be called REINFORCED)

ZR - as part of the tyre size designation (e.g., 225/45ZR17 XL) used to indicate the tyre has a maximum speed capability over 240Kilometer/hour.

## TYRE UPGRADE

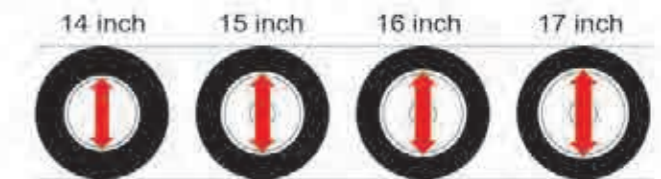
"Tyre Upgrade" means : increase of rim diameter without changing of tyre overall diameter, the trend in development of low aspect ratio is called upgrade.

### INCREASE OF SPORTY PERFORMANCE

The tyre response will be more sensitive when you turn the steering wheel that the flex of tyre will be reduced, and the performance of steering and handling stability will be better, especially under medium and high speed driving

### ENHANCEMENT OF BRAKING ABILITY

The braking stability will be improved due to the decrease of tyre of flex when you brake.



Under the condition of keeping general the same of tyre overall diameter, the tyre can be upgraded to:

Please refer to the clarifications set forth below to upgrade the tyre:

- Without any particular reason, please do not change the overall diameter of tyre easily. The alternation of tyre overall diameter will cause misreading of speedometer or mutual interference between tyre and other parts of vehicle.
- Please determine the width of tire in accordance with the specific width of vehicle. If the width of the entire tyre is increased overly, it will cause mutual interference between tyre and other parts of vehicle, even heading out of the tyre from bodywork which will initiate danger.
- Notice the load index of vehicle when you upgrade the tyre. There is rule to the weight which the tyre can bear (load index) for each size. Please refer to the load index when you chose the proper size.

## LOAD INDEX

Load Index	KG	LBS
70	335	739
71	345	761
72	355	783
73	365	805
74	375	827
75	387	853
76	400	882
77	412	908
78	425	937
79	437	963
80	450	992
81	462	1019
82	475	1047
83	487	1074
84	500	1102

Load Index	KG	LBS
85	515	1135
86	530	1168
87	545	1202
88	560	1235
89	580	1279
90	600	1323
91	615	1356
92	630	1389
93	650	1433
94	670	1477
95	690	1521
96	710	1565
97	730	1609
98	750	1653
99	775	1709

Load Index	KG	LBS
100	800	1764
101	825	1819
102	850	1874
103	875	1929
104	900	1984
105	925	2039
106	950	2094
107	975	2149
108	1000	2205
109	1030	2271
110	1060	2337
111	1090	2403
112	1120	2469
113	1150	2535
114	1180	2601

Load Index	KG	LBS
115	1215	2679
116	1250	2756
117	1285	2833
118	1320	2910
119	1360	2998
120	1400	3086
121	1450	3197
122	1500	3307
123	1550	3417
124	1600	3527
125	1650	3638
126	1700	3748
127	1750	3858
128	1800	3968
129	1850	4079

## SPEED RATING

The speed symbol refers to the maximum speed capabilities of the tyre.

It is only valid for tyre that are properly inflated and loaded within their assigned load index.

Speed Symbol	Q	R	S	T	H	V	W	Y	ZR
Maximum Speed (km/hr)	160	170	180	190	210	240	270	300	240 & above