



**Crowntyre Industrial Co.,Ltd.**

Add:27F, Qingdao International Finance Center No.59, Middle HongKong Road,Qingdao,China 266071

Tel: +86 532 8090 3650 Fax: +86 532 8667 5300

Email: [info@crowntyre.com](mailto:info@crowntyre.com)

[www.crowntyre.com](http://www.crowntyre.com)

**2014-2015 collection**



# Table of Contents

# Table of Contents



## PASSENGER

MAX1000	.01
MAX1100	.01
MAX2000	.02
MAX5000	.02
MAX08(TAXI)	.03
CAPTURAR CH1(3 grooves)	.03
CAPTURAR CH1(4 grooves)	.04
CAPTURAR CF8	.08
CAPTURAR CF3	.08
CAPTURAR CF1	.11
CAPTURAR CF2	.12

## UHP

MAX3000G	.13
CAPTURAR CF2	.18

## SUV/LT

CAPTURAR CF15	.19
MAX AT	.19
MAX AT2	.20
MAX HT	.20
MAX STR	.21
CAPTURAR CH3	.21
CAPTURAR CF11	.22
CAPTURAR CF6	.22
CAPTURAR CF10	.23
CAPTURAR CF5	.23
CAPTURAR CF9	.24

## COMMERCIAL

MAX8000	.24
MAX TRANSP	.25
CAPTURAR CH6	.25
CAPTURAR CF12	.26
LTR WSW	.26

## WINTER

CAPTURAR WCH7	.27
CAPTURAR WCH8	.27
MAX ICE GRIPS	.28



## PASSENGER

ECOWAY EH18	.03
ECOWAY EH1(3 grooves)	.03
ECOWAY EH1(4 grooves)	.04
ECOWAY EH2	.04
STK HP	.05
STK TOUR	.05
ECOWAY EF8	.08
ECOWAY EF3	.08
ECOWAY EF1	.11
ECOWAY EF2	.12

## UHP

STK SPORT	.14
ECOWAY EF7	.18

## SUV/LT

ECOWAY EF2	.12
ECOWAY EF15	.19
STK VAN	.19
STK SUV	.20
ECOWAY EH3	.21
ECOWAY EF11	.22
ECOWAY EF6	.22
ECOWAY EF10	.23
ECOWAY EF5	.23
ECOWAY EF9	.24

## COMMERCIAL

ECOWAY EH6	.25
ECOWAY EF12	.26

## WINTER

ECOWAY WEH7	.27
ECOWAY WEH8	.27



## PASSENGER

F108	.06
F109	.06
102	.07
109	.07
RF08	.07

## UHP

F105	.14
F106	.15
F110	.16

## WINTER

100	.28
110	.29
210	.29



## PASSENGER

ACTIVE CRUISE AF1	.09
ACTIVE CRUISE AF3	.10
ACTIVE CRUISE AF5	.10

## UHP

ACTIVE CRUISE AF2	.17
-------------------	-----

## WINTER

ACTIVE CRUISE AF5	.10
-------------------	-----



## PASSENGER

FM319	.08
FM393	.08
FM316	.11
FM318	.12

## UHP

FM612	.18
-------	-----

## SUV/LT

FM506	.19
FM101	.22
FM627	.22
FM519	.23
FM523	.23
FM516	.24

## COMMERCIAL

FM913	.26
-------	-----



Crowntyre Industrial Co.,Ltd has developed multiple original brands for different types of tires. They have composed a complementary full range product group with diverse emphases on each brand. Crowntyre's global sales and service network forges top quality support for all customers. Our team of tire professionals will provide you the best solution for everyday driving.

**Gremax**

**SUNTEK**

**TRACMAX**

**EVERMAX**

**FIREMAX**



## MAX 1000



SIZE	LOAD INDEX & SPEED	STD.RIM	SECTION WIDTH (MM)	OVERALL DIAMETER (MM)	MAX LOAD KGS	MAX. PRESSURER KPA	LOAD Q'TY NO WRAP
155/65R13	73T	4.50B	157	532	532	300	2000
155/70R13	75T	4.50B	157	548	548	300	2000
155/80R13	79T	4.50B	157	578	578	300	1900
165/65R13	77T	5.00B	170	544	544	300	1800
165/70R13	79T	5.00B	170	562	562	300	1750
165/80R13	83T	4.50B	165	594	594	300	1750
175/60R13	77T	5.00B	177	540	540	300	1700
175/70R13	82T	5.00B	177	576	576	300	1700
185/70R13	86T	5.50B	189	590	590	300	1700
175/65R14	82T	5J	177	584	584	300	1700
175/65R14	82H	5J	177	584	584	300	1700
175/70R14	84T	5J	177	602	602	300	1700
175/70R14	84H	5J	177	602	602	300	1700
185/60R14	82H	5½J	189	578	578	300	1450
185/65R14	86T	5½J	189	596	596	300	1450
185/65R14	86H	5½J	189	596	596	300	1450
185/70R14	88T	5J	189	616	616	300	1650



- \* T-H rated
- \* UTQG 400AA
- \* 3-wide straight Aqua Channel to enhance wet performance
- \* Wing Type Sipe to improve snow traction
- \* Lateral Groove Optimized PRAT using detail PRAT Simulation tool
- \* Low-noise design with 3 pitch sequence for secured driving comfort

## MAX 2000



SIZE	LOAD INDEX & SPEED	STD.RIM	SECTION WIDTH (MM)	OVERALL DIAMETER (MM)	MAX LOAD KGS	MAX. PRESSURER KPA	LOAD Q'TY NO WRAP
185/60R14	82H	5½J	189	578	475	300	1450
185/65R14	86T	5½J	189	596	530	300	1450
185/65R14	86H	5½J	189	596	530	300	1450
195/60R14	86H	6J	201	590	530	300	1225
195/70R14	91T	5J	201	630	615	300	1600
185/55R15	82V	6J	194	585	615	300	1200
195/50R15	82H	6J	201	577	475	300	1250
195/50R15	82V	6J	201	577	475	300	1250
195/55R15	85V	6J	201	595	515	300	1250
195/60R15	88H	6J	201	615	560	300	1150
195/60R15	88V	6J	201	615	560	300	1150
195/65R15	91H	6J	201	635	615	300	1150
195/65R15	91V	6J	201	635	615	300	1150
205/60R15	91H	6J	209	627	615	300	1100
205/60R15	91V	6J	209	627	615	300	1100
205/65R15	94H	6J	209	647	670	300	1070
205/65R15	94V	6J	209	647	670	300	1070
205/60R16	92H	7½J	209	652	630	300	1100
205/60R16	92V	7½J	209	652	630	300	1100



- \* T-H rated
- \* UTQG 420AA
- \* 4-wide straight Aqua Channel to enhance wet performance
- \* Straight Center Rib to improve snow traction
- \* Low-noise design with 3 pitch sequence for secured driving comfort

## MAX 1100



SIZE	LOAD INDEX & SPEED	STD.RIM	SECTION WIDTH (MM)	OVERALL DIAMETER (MM)	MAX LOAD KGS	MAX. PRESSURER KPA	LOAD Q'TY NO WRAP
155/70R13	75T	4.50B	157	548	387	300	2000
165/65R13	77T	5.00B	170	544	412	300	1800
175/60R13	77T	5.00B	177	540	412	300	1700
175/70R13	82T	5.00B	177	576	475	300	1700
185/70R13	86T	5.50B	189	590	530	300	1700
185/60R14	82H	5½J	189	578	475	300	1450
185/65R14	86T	5½J	189	596	530	300	1450
185/65R14	86H	5½J	189	596	530	300	1450
185/70R14	88T	5J	189	616	560	300	1650
195/70R14	91T	5J	201	630	615	300	1600



- \* T-H rated
- \* UTQG 400AA
- \* 3-wide straight Aqua Channel to enhance wet performance
- \* Straight Center Rib to improve snow traction
- \* Low-noise design with 3 pitch sequence for secured driving comfort
- \* Aggressive sidewall design

## MAX 5000



SIZE	LOAD INDEX & SPEED	STD.RIM	SECTION WIDTH (MM)	OVERALL DIAMETER (MM)	MAX LOAD KGS	MAX. PRESSURER KPA	LOAD Q'TY NO WRAP
195/75R14	92S	5½J	196	648	630	300	1250
205/75R14	95S	5½J	203	664	690	300	1080
205/70R15	96S	6J	209	669	710	300	1110
205/75R15	97S	5½J	203	689	730	300	1050
215/70R15	98S	6½J	221	683	750	300	880
215/75R15	100S	6J	216	703	800	300	1030
225/70R15	100S	6½J	228	697	800	300	780
225/75R15	102S	6J	223	719	850	300	940
235/75R15	105S	6½J	235	733	925	300	880



- \* White sidewall, S rated
- \* UTQG 440AB
- \* M+S ALL season tread design



## MAX 08 / ECOWAY EH18 (TAXI)



SIZE	LOAD INDEX & SPEED	STD.RIM	SECTION WIDTH (MM)	OVERALL DIAMETER (MM)	MAX LOAD KGS	MAX. PRESSURER KPA	LOAD Q'TY NO WRAP	UTQG
185/60R14	82T	5.5	189	578	475	300	1700	560AA
185/65R15	88H	5.5	189	621	560	300	1350	560AA
195/60R14	86T	6	201	590	600	300	1300	560AA
165/70R13	79T	5	170	562	437	300	2060	420AA
175/70R14	82H	5	177	602	500	300	1650	560AA



\* Long mileage specially designed for Taxi use.  
\* Transverse shoulder grooves for excellent wet traction



## CAPTURAR CH1 / ECOWAY EH1 (4 grooves)



SIZE	LOAD INDEX & SPEED	STD.RIM	SECTION WIDTH (MM)	OVERALL DIAMETER (MM)	MAX LOAD KGS	MAX. PRESSURER KPA	LOAD Q'TY NO WRAP	UTQG
195/70R14	91H	6	201	630	615	300	1250	480AA
195/60R14	86H	6	201	590	530	300	1400	480AA
205/70R14	98S XL	6	209	644	750	340	1150	480AA
205/65R15	94V	6	209	647	670	300	1300	480AA
195/65R15	91H	6	201	635	615	300	1350	480AA
195/60R15	88H	6	201	615	560	300	1400	480AA
195/55R15	85V	6	201	595	515	300	1450	480AA
205/70R15	96S	6	209	669	710	300	1050	480AA
205/60R15	91V	6	209	627	615	300	1350	480AA
215/70R15	98S	6.5	221	683	750	300	1000	480AA
215/65R15	96H	6.5	221	661	710	300	1060	480AA
205/60R16	92V	6	209	652	630	300	1000	480AA
215/60R16	95H	6.5	221	664	690	300	1000	480AA
225/60R16	98H	6.5	228	676	750	300	950	480AA



\* 4 wide straight grooves effectively channel out water for excellent wet performance.  
\* Wide and aggressive shoulder elements for responsive handling

## CAPTURAR CH1 / ECOWAY EH1 (3 grooves)



SIZE	LOAD INDEX & SPEED	STD.RIM	SECTION WIDTH (MM)	OVERALL DIAMETER (MM)	MAX LOAD KGS	MAX. PRESSURER KPA	LOAD Q'TY NO WRAP	UTQG
175/70R13	82T	5	177	576	475	300	1900	420AA
185/70R13	86T	5.5	189	590	530	300	1660	420AA
175/70R14	84T	5	177	602	500	300	1800	480AA
175/65R14	82H	5	177	584	475	300	1900	480AA
185/70R14	88H	5.5	189	616	560	300	1500	480AA
185/65R14	86H	5.5	189	596	530	300	1680	480AA
185/60R14	82H	5.5	189	578	475	300	1700	480AA
185/60R15	84H	5.5	189	603	500	300	1500	480AA
185/65R15	88H	5.5	189	621	560	300	1500	480AA



\* Economic passenger car tire designed with circumferential grooves for excellent traction performance.

## CAPTURAR CH2 / ECOWAY EH2



SIZE	LOAD INDEX & SPEED	STD.RIM	SECTION WIDTH (MM)	OVERALL DIAMETER (MM)	MAX LOAD KGS	MAX. PRESSURER KPA	LOAD Q'TY NO WRAP	UTQG
205/50R16	87V	6.5	214	612	545	300	1120	300AA
215/55R16	97W XL	7	226	642	730	340	1050	300AA
205/55R16	91H	6.5	214	632	615	300	1080	300AA
225/50R16	92W	7	233	632	630	300	/	300AA
205/50R17	93W	6.5	214	638	650	340	1100	300AA
205/40R17	84W	7.5	212	596	500	340	1200	300AA
215/55R17	94V	7	226	668	670	300	950	300AA
215/50R17	95W	7	226	648	690	340	1000	300AA
215/45R17	91W	7	213	626	615	340	1050	300AA
225/60R17	99V	6.5	228	702	775	300	850	300AA
225/55R17	97W	7	233	680	730	300	950	300AA
225/50R17	98W	7	233	658	750	340	950	300AA
225/45R17	94W	7.5	225	634	670	340	1000	300AA
235/45R17	97W	8	236	644	730	340	900	300AA
245/45R17	99W	8	243	652	775	340	/	300AA
225/40R18	88W	8	230	637	560	300	950	300AA
235/40R18	95W	8.5	241	645	690	340	900	300AA
245/45R18	100W	8	243	677	800	340	800	300AA
245/40R18	97W	8.5	248	653	730	340	850	300AA



\* Center circumferential channel provides superior water evacuation  
\* Excellent performance on street tuned vehicles

# PCR



## STK HP

SUNTEK

SIZE	LOAD INDEX & SPEED	STD.RIM	SECTION WIDTH (MM)	OVERALL DIAMATER (MM)	MAX LOAD KGS	MAX. PRESSURER KPA	LOAD Q'TY NO WRAP
185/60R14	82H	5½J	189	578	475	300	1500
185/65R14	86H	5½J	189	596	530	300	1450
185/65R14	86T	5½J	189	596	530	300	1450
185/65R15	88H	5½J	189	621	560	300	1250
185/65R15	88T	5½J	189	621	560	300	1250
195/50R15	82H	6J	201	577	475	300	1400
195/50R15	82V	6J	201	615	475	300	1400
195/55R15	85V	6J	201	595	515	300	1300
195/60R14	86H	6J	201	590	530	300	1450
195/60R15	88H	6J	201	615	560	300	1200
195/60R15	88V	6J	201	615	560	300	1200
195/65R15	91H	6J	201	635	615	300	1150
195/65R15	91V	6J	201	635	615	300	1150
205/55R16	91H	6½J	214	632	615	300	1100
205/60R15	91H	6J	209	627	615	300	1050
205/60R15	91V	6J	209	627	615	300	1050
205/60R16	92H	7½J	209	652	630	300	1030
205/60R16	92V	7½J	209	652	630	300	1030
205/65R15	94H	6J	209	647	670	300	1080
205/65R15	94V	6J	209	647	670	300	1080



\* All-season performance radial available in 4-groove design, which disperses water to the sides of the tire  
 \* Wide groove enhance wet handling and braking

## F109

TRACMAX

SIZE	LOAD INDEX & SPEED	STD.RIM	SECTION WIDTH (MM)	OVERALL DIAMATER (MM)	MAX LOAD KGS	MAX. PRESSURER KPA	LOAD Q'TY NO WRAP
175/60R14	79H	5J	177	566	437	300	1750
185/50R14	77V	6J	194	542	412	300	1550
185/55R14	80H	6J	194	560	450	300	1450
215/65R15	96H	6½J	221	661	710	300	1000
195/50R16	84H	6J	201	602	500	300	1150
195/50R16	84V	6J	201	602	500	300	1150
195/55R16	87H	6J	201	620	545	300	1050
195/55R16	87V	6J	201	620	545	300	1050
215/60R16	95H	6½J	221	664	690	300	1080
215/60R16	95V	6½J	221	664	690	300	1080
225/60R16	98H	6½J	228	676	750	300	1030
225/60R16	98V	6½J	228	676	750	300	1030
215/65R16	98H	6½J	221	686	750	300	1030



\* An economic passenger car tire with excellent durability

## STK TOUR

SUNTEK

SIZE	LOAD INDEX & SPEED	STD.RIM	SECTION WIDTH (MM)	OVERALL DIAMATER (MM)	MAX LOAD KGS	MAX. PRESSURER KPA	LOAD Q'TY NO WRAP
155/65R13	73T	4½B	157	532	365	300	2100
155/65R14	75T	4½J	157	558	387	300	2000
155/70R13	75T	4½B	157	548	387	300	2100
155/80R13	79T	4½B	157	578	437	300	2000
165/60R14	75H	5J	170	554	387	300	1850
165/65R13	77T	5B	170	544	412	300	1900
165/65R14	79T	5J	170	570	437	300	1800
165/70R13	79T	5B	170	562	475	300	1850
165/70R14	81T	5B	170	588	462	300	1700
165/80R13	83T	4½B	165	594	437	300	1800
175/65R14	82H	5J	177	584	475	300	1700
175/65R14	82T	5J	177	584	475	300	1700
175/65R15	84H	5J	177	609	500	300	1600
175/70R13	82T	5B	177	576	475	300	1800
175/70R14	84H	5J	177	602	500	300	1650
175/70R14	84T	5J	177	602	500	300	1650
185/70R13	86T	5½B	189	590	530	300	1700
185/70R14	88T	5J	189	616	560	300	1420



\* An economic passenger tire  
 \* all season with superior wet and dry handling, exclusively designed for comfort and noise reduction.

## F108

TRACMAX

SIZE	LOAD INDEX & SPEED	STD.RIM	SECTION WIDTH (MM)	OVERALL DIAMATER (MM)	MAX LOAD KGS	MAX. PRESSURER KPA	LOAD Q'TY NO WRAP
185/60R14	82H	5½J	189	578	475	300	1490
185/65R14	86H	5½J	189	596	530	300	1480
185/65R14	86T	5½J	189	596	530	300	1480
195/60R14	86H	6J	201	590	530	300	1290
185/55R15	82H	6J	194	585	475	300	1400
185/55R15	82V	6J	194	585	475	300	1400
185/60R15	84H	6J	199	603	500	300	1480
185/65R15	88H	5½J	189	621	560	300	1350
185/65R15	88T	5½J	189	621	560	300	1350
195/50R15	82H	6J	201	577	475	300	1320
195/50R15	82V	6J	201	577	475	300	1320
195/55R15	85V	6J	201	595	515	300	1300
195/60R15	88H	6J	201	615	560	300	1300
195/60R15	88V	6J	201	615	560	300	1300
195/65R15	91H	6J	201	635	615	300	1260
195/65R15	91V	6J	201	635	615	300	1260
205/60R15	91H	6J	209	627	615	300	1200
205/60R15	91V	6J	209	627	615	300	1200
205/65R15	94H	6J	209	647	670	300	1120
205/65R15	94V	6J	209	647	670	300	1120
205/55R16	91H	6½J	214	632	615	300	1150
205/55R16	91V	6½J	214	632	615	300	1150
205/60R16	92H	7½J	209	652	630	300	1050
205/60R16	92V	7½J	209	652	630	300	1050
215/60R16	95H	6½J	221	664	690	300	1080
215/60R16	95V	6½J	221	664	690	300	1080
225/60R16	98H	6½J	228	676	750	300	1030
225/60R16	98V	6½J	228	676	750	300	1030
175/60R14	102V XL	6½J	177	566	435	300	1700
185/50R14	77V	6J	194	542	412	300	1550
185/55R14	80H	6J	194	560	450	300	1450
215/65R15	96H	6½J	221	661	710	300	1000
195/50R16	84H	6J	201	602	500	300	1150
195/50R16	84V	6J	201	602	500	300	1150
195/55R16	87H	6J	201	620	545	300	1050
195/55R16	87V	6J	201	620	545	300	1050
215/65R16	98H	6½J	221	686	750	300	1030



\* Directional pattern design and center rib to enhance the high speed stability  
 \* 3D lateral groove to strengthen the block stiffness to prevent from irregular wear  
 \* The sharp block edge puncture the water to prevent from hydroplaning

## R102

### TRACMAX

SIZE	LOAD INDEX & SPEED	STD.RIM	SECTION WIDTH (MM)	OVERALL DIAMETER (MM)	MAX LOAD KGS	MAX. PRESSURER KPA	LOAD Q'TY NO WRAP
155/65R13	73T	4.50B	157	532	365	300	2105
165/65R13	77T	5J	170	562	412	300	2050
175/65R13	80T	5J	170	554	450	300	1900
145/70R13	71T	4.50B	150	534	345	300	2200
155/70R13	75T	4.50B	157	548	387	300	2120
165/70R13	79T	5J	177	558	437	300	2000
145/80R13	75T	4.00B	145	562	387	300	2100
175/70R13	82T	5J	177	584	475	300	1840
185/70R13	86T	5J	189	616	530	300	1660
155/80R13	79T	4.50B	157	578	437	300	2000
165/80R13	83T	5.50B	189	590	437	300	1800
165/60R14	75H	5J	170	544	387	300	1850
165/65R14	79T	4.50B	165	594	570	300	1800
175/65R14	82T	5J	170	570	475	300	1700
175/65R14	82H	5J	170	588	475	300	1700
165/70R14	81T	5J	177	576	462	300	1700
175/70R14	84T	5J	177	602	500	300	1650
175/70R14	84H	5J	177	602	500	300	1650
185/70R14	88T	5J	201	630	560	300	1450
195/70R14	91T	5J	209	644	615	300	1270
205/70R14	95T	5J	177	609	690	300	1220
175/65R15	84H	5J	177	584	500	300	1500
205/70R15	96T	6J	209	669	710	300	1120



\* An economic passenger car tyre. All season with superior wet and dry handling, exclusively designed for comfort and noise reduction.

## CAPTURAR CF8 / ECOWAY EF8 / FM319

### Gremax SUNTEK FIREMAX

SIZE	LOAD INDEX & SPEED	STD.RIM	SECTION WIDTH (MM)	OVERALL DIAMETER (MM)	MAX LOAD KGS	MAX. PRESSURER KPA
195/65R15	91H/V	6.0	201	635	615	300
215/60R15	94H/V	6.5	218	639	670	300
215/75R15	100H/T	6.0	216	703	800	300
205/50R16	87H/V/W	6.5	214	612	545	300
225/55R16	99H/V XL	7.0	233	654	775	340
235/60R16	100H/V	7.0	240	688	800	300
225/55R18	98H/V	7.0	233	705	750	300



\* Variable progressive siping provides excellent traction  
\* Specially designed compound for a more comfortable driving

## R109

### TRACMAX

SIZE	LOAD INDEX & SPEED	STD.RIM	SECTION WIDTH (MM)	OVERALL DIAMETER (MM)	MAX LOAD KGS	MAX. PRESSURER KPA	LOAD Q'TY NO WRAP
155/80R12	77T	4.50B	157	553	412	300	2400
165/55R13	70H	5.00B	170	512	335	300	2030
155/65R14	75T	5J	157	558	387	300	2000
145/80R12	74T	4B	145	537	412	300	2500
175/65R14C	90/88T	5J	177	584	1200/2240	375	1700



## RF08(TAXI)

### TRACMAX

SIZE	LOAD INDEX & SPEED	STD.RIM	SECTION WIDTH (MM)	OVERALL DIAMETER (MM)	MAX LOAD KGS	MAX. PRESSURER KPA	LOAD Q'TY NO WRAP
155R12C	88/86N	4.50B	157	550	1170/2120	450	2200



## CAPTURAR CF3 / ECOWAY EF3 / FM393

### Gremax SUNTEK FIREMAX

SIZE	LOAD INDEX & SPEED	STD.RIM	SECTION WIDTH (MM)	OVERALL DIAMETER (MM)	MAX LOAD KGS	MAX. PRESSURER KPA
P205/55R16	89H/V	6.5	214	632	580	300
P215/55R16	91H/V	7	226	642	615	300
P215/60R16	94H/V	6.5	221	664	670	300
P225/55R16	94H/V	7	233	654	670	300
P225/60R16	97H/V	6.5	228	676	730	300
P215/55R17	93H/V	7	226	668	650	300
P215/60R17	95H/V	6.5	221	690	690	300
P215/65R17	98H/V	6.5	221	712	750	300
P225/55R17	95H/V	7	233	680	690	300
P225/60R17	98H/V	6.5	228	702	750	300
P225/55R18	97H/V	7	233	705	730	300
P225/60R18	99H/V	6.5	228	727	778	300



\* Variable tread pitch sequence for a smooth and quiet ride  
\* Transverse shoulder grooves for excellent wet traction

# PCR



# PCR



## ACTIVE CRUISE AF1

### EVERMAX

SIZE	LOAD INDEX & SPEED	STD.RIM	SECTION WIDTH (MM)	OVERALL DIAMETER (MM)	MAX LOAD KGS	MAX. PRESSURER KPA	UTQG
165/70R13	79T	5.00B	170	562	437	300	380 A A
175/70R13	82T	5.00B	177	576	475	300	380 A A
165/65R14	79T	5J	170	570	437	300	380 A A
175/65R14	82T	5J	177	584	475	300	380 A A
185/60R14	82H	5½J	189	578	475	300	380 A A
185/65R14	86T	5½J	189	596	530	300	380 A A
185/65R14	86H	5½J	189	596	530	300	380 A A
185/70R14	88T	5½J	189	616	560	300	380 A A
185/70R14	88H	5½J	189	616	560	300	380 A A
195/60R14	86H	6J	201	590	530	300	380 A A
195/70R14	91T	6J	201	630	615	300	380 A A
195/70R14	91H	6J	201	630	615	300	380 A A
205/70R14	98T XL	6J	209	644	750	340	380 A A
185/60R15	84H	5½J	189	603	500	300	380 A A
185/60R15	88H XL	5½J	189	603	560	340	380 A A
185/65R15	88T	5½J	189	621	560	300	380 A A
185/65R15	88H	5½J	189	621	560	300	380 A A
195/50R15	82V	6J	201	577	475	300	380 A A
195/55R15	85V	6J	201	595	515	300	380 A A
195/60R15	88H	6J	201	615	560	300	380 A A
195/60R15	88V	6J	201	615	560	300	380 A A
195/65R15	91H	6J	201	635	615	300	380 A A
195/65R15	91V	6J	201	635	615	300	380 A A
205/60R15	91H	6J	209	627	615	300	380 A A
205/60R15	91V	6J	209	627	615	300	380 A A
205/65R15	94H	6J	209	647	670	300	380 A A
215/65R15	96H	6½J	221	661	800	340	380 A A
215/65R15	100H XL	6½J	221	661	800	340	380 A A
215/70R15	98T	6½J	221	683	750	300	380 A A
195/55R16	87H	6J	201	620	545	300	380 A A
195/55R16	87V	6J	201	620	545	300	380 A A
205/50ZR16	87W	6½J	214	612	545	300	320 A A
205/55ZR16	91W	6½J	214	632	615	300	320 A A
205/60R16	92H	6J	209	652	630	300	380 A A
205/60R16	92V	6J	209	652	630	300	380 A A
205/65R16	95V	6J	209	672	690	300	380 A A
215/55ZR16	97W XL	7J	226	642	730	340	320 A A
215/60R16	95V	6½J	221	664	690	300	380 A A
215/65R16	98H	6½J	221	686	750	300	380 A A
225/50ZR16	92W	7J	233	632	630	300	320 A A
225/50ZR16	96W XL	7J	233	632	710	340	320 A A
225/55ZR16	99W XL	7J	233	654	775	340	320 A A
225/60R16	98H	6½J	228	676	750	300	380 A A
225/60R16	102H XL	6½J	228	676	850	340	380 A A



\* Variable angle siping reduces road noise  
 \* Non directional design allows for cross rotation to maximize usable tread life

## ACTIVE CRUISE AF3

### EVERMAX

SIZE	LOAD INDEX & SPEED	STD.RIM	SECTION WIDTH (MM)	OVERALL DIAMETER (MM)	MAX LOAD KGS	MAX. PRESSURER KPA	UTQG
215/75R15	100H	6J	216	703	800	300	440 A A
215/75R15	100T	6J	216	703	800	300	440 A A
225/75R15	102T	6J	223	719	850	300	440 A A
235/60R16	100H	7J	240	688	800	300	440 A A
235/70R16	106T	7J	240	736	950	300	440 A A
245/70R16	107T	7J	248	750	975	300	440 A A
255/65R16	109H	7½J	260	738	1030	300	440 A A
255/70R16	111T	7½J	260	764	1090	300	440 A A
265/70R16	112T	8J	272	778	1120	300	440 A A
235/65R17	108H XL	7J	240	738	1000	340	440 A A
245/65R17	111H XL	7J	248	750	1090	340	440 A A
265/70R17	103H	8J	272	804	1215	300	440 A A



\* Variable pitch design optimizes for a quiet and smooth ride  
 \* Wide aggressive shoulder elements for responsive handling

## ACTIVE CRUISE AF5 (WINTER)

### EVERMAX

SIZE	LOAD INDEX & SPEED	STD.RIM	SECTION WIDTH (MM)	OVERALL DIAMETER (MM)	MAX LOAD KGS	MAX. PRESSURER KPA
175/65R14	82T	5J	177	584	475	300
175/65R14	82H	5J	177	584	475	300
185/65R14	86T	5½J	189	596	530	300
185/65R14	86H	5½J	189	596	530	300
185/65R15	88T	5½J	189	621	560	300
185/65R15	88H	5½J	189	621	560	300
195/60R15	88T	6J	201	615	560	300
195/60R15	88T	6J	201	615	560	300
195/65R15	91T	6J	201	635	615	300
195/65R15	91H	6J	201	635	615	300
205/65R15	94T	6J	209	647	670	300
205/65R15	94H	6J	209	647	670	300
205/55R16	94T XL	6½J	214	632	615	300
205/60R16	96T	6J	209	652	710	340
205/60R16	96HXL	6J	209	652	710	340
215/55R16	97T XL	7J	226	642	730	340
215/55R16	97H XL	7J	226	642	730	340
215/60R16	99H XL	6½J	221	664	775	340



\* Directional tread pattern with curved grooves enhances traction on wet and snowy road.



PCR



**CAPTURAR CF1 / ECOWAY EF1 / FM316**

**Gremax** **SUNTEK** **FIREMAX**

SIZE	LOAD INDEX &SPEED	STD.RIM	SECTION WIDTH (MM)	OVERALL DIAMATER (MM)	MAX LOAD KGS	MAX. PRESSURER KPA
155/65R13	73T	4.5	157	532	365	300
155/70R13	75T	4.5	157	548	387	300
155/80R13	79T	4.5	157	578	437	300
165/65R13	77T	5.0	170	544	412	300
165/70R13	79T	5.0	170	562	437	300
165/80R13	83T	4.5	165	594	487	300
175/60R13	77T	5.0	177	540	412	300
175/70R13	82T/S	5.0	177	576	475	300
185/70R13	86H/T	5.5	189	590	530	300
165/70R14	81T	5.0	170	588	462	300
175/65R14	82H/T	5.0	177	584	475	300
175/65R14	86T XL	5.0	177	584	530	300
175/70R14	84(83)	5.0	177	602	500(487)	300
185/60R14	82H/T	5.5	189	578	475	300
185/65R14	86H/T	5.5	189	596	530	300
185/70R14	88(87)H/T	5.5	189	616	560(545)	300
195/60R14	86H	6.0	201	590	530	300
195/65R14	89H/T	6.0	201	610	580	300
195/70R14	91(90)	6.0	201	630	615(600)	300
205/60R14	88H	6.0	209	602	560	300
205/70R14	95(93)H/T(S)	6.0	209	644	690(650)	300
215/70R14	96H/T	6.5	221	658	710	300
185/55R15	82H/V	6.0	194	585	475	300
185/60R15	88H/V XL	5.5	189	603	560	300
185/65R15	88H/T	5.5	189	621	560	300
195/50R15	82H/V	6.0	201	577	475	300
195/55R15	85H/V	6.0	201	595	515	300
195/60R15	88H/V	6.0	201	615	560	300
195/65R15	91H/V	6.0	201	635	615	300
205/60R15	91H/V	6.0	209	627	615	300
205/65R15	94H/V	6.0	209	647	670	300
205/70R15	96H/T	6.0	209	669	710	300
215/60R15	94H/V	6.5	221	639	670	300
215/65R15	96H/V	6.5	221	661	710	300
215/70R15	98H/T	6.5	221	683	750	300
225/60R15	96H/V	6.5	228	651	710	300
205/55R16	91H/V	6.5	214	632	615	300
205/55R16	94V XL	6.5	214	632	670	340
205/60R16	92H/V	6.0	209	652	630	300
205/65R16	95H/V	6.0	209	672	690	300
215/55R16	93H/V	7.0	226	642	650	300
215/55R16	97W XL	7.0	226	642	730	340
215/60R16	95H/V	6.5	221	664	690	300
215/65R16	98H/V	6.5	221	686	750	300
225/55R16	95H/V	7.0	233	654	690	300
225/60R16	98H/V	6.5	228	676	750	300
235/60R16	100H/V	7.0	240	688	800	300
215/55R17	94H/V	7.0	226	668	670	300
225/55R17	101H XL	7.0	233	680	825	340



\* Strong center rib enhances high speed performance and directional stability  
 \* Multi-angle sipes reduce rolling resistance and irregular wear to improve longer tread life

PCR



**CAPTURAR CF2 / ECOWAY EF2 / FM318**

**Gremax** **SUNTEK** **FIREMAX**

SIZE	LOAD INDEX &SPEED	STD.RIM	SECTION WIDTH (MM)	OVERALL DIAMATER (MM)	MAX LOAD KGS	MAX. PRESSURER KPA
P175/70R13	82S/T	5	177	576	470	300
P155/80R13	79T	6.5	226	632	435	300
185/60R14	82H	5.5	189	578	475	300
195/60R14	86H	6	201	590	530	300
175/65R14	82T	5	177	584	475	300
185/65R14	86T	5.5	189	596	530	300
P175/70R14	84S/T	5	177	602	500	300
185/70R14	88T	5.5	189	616	560	300
195/70R14	91T	6	201	630	615	300
205/70R14	95T	6	209	644	750	300
215/70R14	96T	6.5	221	658	710	300
P185/75R14	89S/T	5	184	634	585	300
P195/75R14	92S/T	5.5	196	648	635	300
P205/75R14	95S/T	5.5	203	664	695	300
215/75R14	100S/T	6	216	678	880	300
185/55R15	82V	6	194	585	475	300
195/55R15	85H/V	6	201	595	515	300
185/60R15	84H/T/V	5.5	189	603	500	300
195/60R15	88H/V	6	201	615	560	300
205/60R15	91H/V	6	209	627	615	300
185/65R15	88H/T	5.5	189	621	560	300
195/65R15	91H/V/T	6	201	635	615	300
205/65R15	94H/V	6	209	647	670	300
215/65R15	96H/V	6.5	221	661	710	300
205/70R15	96T	6	209	669	710	300
215/70R15	98T	6.5	221	683	750	300
165/80R15	87T	4.5	165	645	545	300
215/55R16	93H/V	7	226	642	650	300
205/60R16	92H/V	6	209	652	630	300
215/60R16	95H/V	6.5	221	664	690	300
225/60R16	98H/V	6.5	228	676	750	300
205/65R16	95H/V	6	209	672	690	300
215/65R16	98H/T/V	6.5	221	686	750	300



\* Variable progressive siping provides excellent traction  
 \* Solid center rib for improved steering response

# UHP

## MAX 3000 G



SIZE	LOAD INDEX & SPEED	STD.RIM	SECTION WIDTH (MM)	OVERALL DIAMETER (MM)	MAX LOAD KGS	MAX. PRESSURER KPA	LOAD Q'TY NO WRAP
205/55R16	91W	6½J	214	632	615	300	1100
215/60R16	95V	6½J	221	664	690	300	1000
205/40R17	84W XL	7½J	212	596	500	340	1150
215/45R17	91W XL	7J	213	626	615	340	1100
215/55R17	94V	8J	243	652	775	340	820
235/45R17	97W XL	8J	236	644	730	340	900
225/55R16	95W	7J	233	654	690	300	1000
205/60R16	92V	6J	209	652	630	300	1100
225/60R16	98V	6½J	228	676	750	300	1000
245/45ZR17	99W XL	8J	243	652	775	340	750
225/50ZR17	98W XL	7J	233	658	750	340	1000
225/55ZR17	101W XL	7J	233	680	825	340	950
225/60R17	99H	6½J	228	702	775	300	900
245/40ZR18	97W XL	8½J	248	653	730	340	750
225/40ZR18	92W XL	8J	230	637	630	340	900
235/40ZR18	95W XL	8½J	241	645	690	340	900
245/45ZR18	100Y XL	8J	243	677	800	340	700
255/45ZR18	103W XL	8½J	255	687	875	340	650
225/55R18	98V	7J	233	705	750	300	780
235/50ZR18	101W XL	7½J	245	693	825	340	700
225/60R18	100V	6½J	228	727	800	300	850
235/35ZR19	91W XL	8½J	241	647	615	340	900
245/35ZR19	93W XL	8½J	248	655	650	340	840
245/45ZR19	102W XL	8J	243	703	850	340	800
245/40ZR19	98Y XL	8½J	248	679	750	300	750
235/40ZR19	96Y XL	8½J	241	671	710	300	800
255/35ZR19	96Y XL	9J	260	661	710	300	780
245/30ZR20	90W XL	8½J	248	656	600	340	750
225/35ZR20	90W XL	8J	230	666	600	340	880
275/30ZR20	97W XL	9½J	278	674	730	340	680
245/35ZR20	95W	8½J	248	680	690	340	720



- \* V-W rated
- \* 4 wide straight Aqua chance
- \* Optimized pattern and block stiffness to improve tire performance
- \* Asymmetric pattern design to enhance both inside wet performance and outside handling
- \* Rigid shoulder block to enhance the safety of cornering

# UHP

## STK SPORT



SIZE	LOAD INDEX & SPEED	STD.RIM	SECTION WIDTH (MM)	OVERALL DIAMETER (MM)	MAX LOAD KGS	MAX. PRESSURER KPA	LOAD Q'TY NO WRAP
205/40R17	84W XL	7½ J	212	596	500	340	1150
205/45R17	88W XL	7 J	206	616	500	340	1050
205/50R16	87W STD	6½J	214	612	545	300	1100
205/50R17	93W XL	6½J	214	638	650	340	1050
205/55R16	91V STD	6½J	214	632	615	300	1100
205/55R16	91W STD	6½J	214	632	615	300	1100
215/40R17	87W XL	7½ J	218	604	545	340	1100
215/45R17	91W XL	7 J	213	626	615	340	1100
215/55R16	97W XL	7J	226	642	730	340	1000
225/40R18	92W XL	8J	230	637	630	340	920
225/45R17	94W XL	7½ J	225	634	670	340	1000
225/55R16	99W XL	7J	223	654	690	300	950
235/40R18	95W XL	8½ J	241	645	690	340	900
235/45R17	97W XL	8J	236	644	730	340	900



- \* An high performance tire
- \* Asymmetric pattern provides the superior precision control and responsiveness need under extreme driving conditions

## F105



SIZE	LOAD INDEX & SPEED	STD.RIM	SECTION WIDTH (MM)	OVERALL DIAMETER (MM)	MAX LOAD KGS	MAX. PRESSURER KPA	LOAD Q'TY NO WRAP
225/35R19	88W XL	8J	230	641	560	340	900
235/35R19	91W XL	8½J	241	647	615	340	860
265/30R19	93W XL	9½ J	271	643	650	340	750
225/30R20	85W XL	7½ J	225	634	600	340	950
225/35R20	90W XL	7½ J	225	634	600	340	950
235/30R20	88Y XL	8½ J	242	650	560	340	950
245/35R20	95W XL	8J	243	677	690	340	800
255/35R20	97W XL	8½ J	248	680	730	340	700
215/40R16XL	86W	7½ J	218	578	530	340	1180
195/45R16XL	84V	6½ J	195	582	500	340	1200
205/45R16XL	87W	7J	206	590	545	340	1100
215/50R17XL	95W	7J	226	648	690	340	1000
225/50R17XL	98W	7J	233	658	750	340	950
225/55R17XL	101W	7J	233	680	825	340	920
235/55R17XL	103W	7½ J	245	690	875	340	900
235/50R18	97W	7½ J	245	693	730	300	700



- \* Asymmetric pattern design enhances tyre performance
- \* Jointless spiral wrapped full nylon cap provides uniformity and durability
- \* Rim-protector designed to help protect alloy wheel from accidental curb damage

# UHP



## F106

### TRACMAX

SIZE	LOAD INDEX & SPEED	STD. RIM	SECTION WIDTH (MM)	OVERALL DIAMETER (MM)	MAX LOAD KGS	MAX. PRESSURE KPA	LOAD Q'TY NO WRAP
215/40R16	86W XL	7J	206	616	530	340	1200
205/50R16	87W	71/2 J	218	578	545	300	1120
205/55R16	91W	7J	223	654	615	300	1150
215/55R16	97W XL	7J	213	626	730	340	920
225/55R16	99W XL	81/2 J	241	645	690	340	900
205/40R17	84W XL	61/2 J	214	612	500	340	1200
205/45R17	88W XL	61/2 J	214	632	560	340	1150
215/40R17	87W XL	61/2 J	214	638	545	340	1150
215/45R17	91W XL	71/2 J	218	604	615	340	1100
225/45R17	94W XL	71/2 J	218	607	670	340	1020
245/45R17	99W XL	81/2 J	248	655	775	340	850
205/50R17	93W XL	7J	226	642	650	340	1060
215/55R17	98W XL	7J	223	680	775	340	870
215/35R18	84W XL	71/2 J	212	596	500	340	1100
225/40R18	92W XL	8J	243	652	630	340	930
225/45R18	95W XL	8J	230	637	690	340	880
235/40R18	95W XL	71/2 J	225	659	690	340	880
245/40R18	97W XL	81/2 J	255	687	730	340	850
245/45R18	100W XL	8J	230	666	800	340	770
255/45R18	103W XL	8J	260	686	875	340	700
235/50R18	97W	71/2 J	245	693	730	300	700
245/35R19	93W XL	81/2 J	248	653	650	340	840
225/35R20	90W XL	71/2 J	225	634	600	340	880
245/35R20	95W XL	8J	243	677	690	340	750
255/35R20	97W XL	81/2 J	248	680	730	340	750
195/45R16	84V XL	61/2 J	195	582	500	340	1300
205/45R16	87W XL	7J	206	590	545	340	1150
235/45R17	97W XL	8J	236	644	730	340	900
215/50R17	95W XL	7J	226	648	690	340	1000
225/50R17	98W XL	7J	233	658	750	340	950
225/55R17	101W XL	7J	233	680	825	340	920
235/55R17	103W XL	71/2 J	245	690	875	340	900



\* W-speed rated tyre that combines superior performance with greater comfort.  
 \* The F106 is an ultra high performance tyre that will enhance the ride and the responsiveness of your car.

# UHP



## F110

### TRACMAX

SIZE	LOAD INDEX & SPEED	STD. RIM	SECTION WIDTH (MM)	OVERALL DIAMETER (MM)	MAX LOAD KGS	MAX. PRESSURE KPA	LOAD Q'TY NO WRAP
265/50R20	107V	91/2 J	278	728	1090	340	565
275/40R20	106V XL	91/2 J	271	771	950	340	590
275/45R20	110V XL	11J	313	803	1060	340	570
285/50R20	116V XL	81/2 J	241	701	1250	340	510
275/55R20	117V XL	91/2 J	271	745	1285	340	520
245/30R22	92W XL	9J	297	794	630	340	700
285/35R22	106V XL	10J	290	759	950	340	460
305/40R22	114V XL	101/2 J	301	744	1180	340	410
235/30R22	90W XL	11J	313	824	600	340	750
295/40R24	114V XL	81/2 J	248	707	1060	340	420
255/30R22	95W XL	81/2 J	277	774	690	340	650
265/35R22	102V XL	9J	273	756	850	340	550
265/40R22	106V XL	101/2 J	301	816	950	340	570
255/30R24	97V XL	81/2 J	284	810	730	340	600
305/35R24	112V XL	9J	260	713	1120	340	400
295/35R24	110V XL	9J	260	764	1060	340	400
305/30R26	109V XL	11J	313	844	1030	340	350
325/35R28	120V XL	11 1/2 J	331	939	1400	340	380



\* Four straight grooves designed patterns enhance the prevention from hydroplaning.  
 \* This pattern is the leader of superior performance. It is suitable on bumpy and soft roads as well as wild side.

# UHP



## ACTIVE CRUISE AF2

**EVERMAX**

SIZE	LOAD INDEX & SPEED	STD.RIM	SECTION WIDTH (MM)	OVERALL DIAMETER (MM)	MAX LOAD KGS	MAX. PRESSURER KPA	LOAD Q'TY NO WRAP	UTQG
195/50R15	82V	6J	201	577	475	300	475	320 A A
195/55R15	85V	6J	201	595	515	300	515	320 A A
205/45ZR16	87W XL	7J	206	590	545	340	545	320 A A
205/50ZR16	91W XL	6½J	214	612	615	340	615	320 A A
205/55ZR16	91W	6½J	214	632	615	300	615	320 A A
215/55ZR16	97W XL	7J	226	642	730	340	730	320 A A
225/50ZR16	96W XL	7J	233	632	710	340	710	320 A A
205/40ZR17	84W XL	7½J	212	596	500	340	500	320 A A
205/45ZR17	88W XL	7J	206	616	560	340	560	320 A A
205/50ZR17	93W XL	6½J	214	638	650	340	650	320 A A
215/45ZR17	91W XL	7J	213	626	615	340	615	320 A A
215/50ZR17	95W XL	7J	226	648	690	340	690	320 A A
215/55ZR17	98W XL	7J	226	668	750	340	750	320 A A
225/45ZR17	94W XL	7½J	225	634	670	340	670	320 A A
225/50ZR17	98W XL	7J	233	658	750	340	750	320 A A
225/55ZR17	101W XL	7J	233	680	825	340	825	320 A A
235/45ZR17	97W XL	8J	236	644	730	340	730	320 A A
235/55ZR17	103W XL	7½J	245	690	875	340	875	320 A A
215/35ZR18	84W XL	7½J	218	607	500	340	500	320 A A
225/40ZR18	92W XL	8J	230	637	630	340	630	320 A A
225/45ZR18	95W XL	7½J	225	659	690	340	690	320 A A
235/40ZR18	95W XL	8½J	241	645	690	340	690	320 A A
245/40ZR18	97W XL	8½J	248	653	730	340	730	320 A A
245/45ZR18	100W XL	8J	243	677	800	340	800	320 A A
255/45ZR18	103W XL	8½J	255	687	875	340	875	320 A A
225/35ZR19	88W XL	8J	230	641	560	340	560	320 A A
235/35ZR19	91W XL	8½J	241	647	615	340	615	320 A A
245/35ZR19	93W XL	8½J	248	655	650	340	650	320 A A
245/45ZR19	102W XL	8J	243	703	850	340	850	320 A A
225/35ZR20	90W XL	8J	230	666	600	340	600	320 A A
235/35ZR20	92W XL	8½J	241	672	630	340	630	320 A A



\* Optimized performance design for confident cornering and excellent traction  
 \* Asymmetric pattern design for reduced irregular wear and quiet ride

# UHP



## CAPTURAR CF7 / ECOWAY EF7 / FM612

**Gremax**

**SUNTEK**

**FIREMAX**

SIZE	LOAD INDEX & SPEED	STD.RIM	SECTION WIDTH (MM)	OVERALL DIAMETER (MM)	MAX LOAD KGS	MAX. PRESSURER KPA
195/50R15	82H	6	201	577	475	300
205/50R15	86H	6.5	214	587	530	300
205/50R16	87H	6.5	214	612	545	300
225/50R16	92H	7	233	632	630	300
215/50R17	91V	7	226	648	615	300
225/50R17	94V	7	233	658	670	300
205/40R17	84H XL	7.5	212	596	500	340
215/45R17	91W XL	7	213	626	615	340
225/45R17	94W XL	7.5	225	634	670	340
235/45R17	97W XL	8	236	644	730	340
245/45R17	99W XL	8	243	652	775	340
225/40R18	92WXL	8	230	637	630	340
225/45R18	95V XL	7.5	225	659	690	340
245/45R18	100VXL	8	243	677	800	340
225/30R20	85WXL	8	230	644	515	340
225/35R20	90WXL	8	230	666	600	340
235/30R20	88WXL	8.5	241	650	560	340
245/35R20	95WXL	8.5	248	680	690	340
255/35R20	97WXL	9	260	686	730	340
265/50R20	107V	8.5	277	774	975	300
265/50R20	111VXL	8.5	277	774	1090	340
275/40R20	106VXL	9.5	278	728	950	340
275/45R20	110H/VXL	9	273	756	1060	340
285/50R20	116H/VXL	9	297	794	1250	340
275/55R20	117H/VXL	8.5	284	810	1285	340
245/30R22	92WXL	8.5	248	707	630	340
255/30R22	95WXL	9	260	713	690	340
265/35R22	102VXL	9.5	271	745	850	340
285/35R22	106VXL	10	290	759	950	340
305/40R22	114VXL	11	313	803	1180	340
265/40R22	106VXL	9.5	271	771	950	340
235/30R22	90WXL	8.5	241	701	600	340
255/30R24	97VXL	9	260	764	730	340
295/40R24	114VXL	10.5	301	846	1180	340
305/35R24	112VXL	11	313	824	1120	340
295/35R24	110VXL	10.5	301	816	1060	340
305/30R26	109VXL	11	313	844	1030	340
325/35R28	120VXL	11.5	331	939	1400	340



\* Excellent performance on street tuned cars  
 \* Extra load construction for increased load requirements of larger vehicles

# SUV/LT

## CAPTURAR CF15 / ECOWAY EF15 / FM506

Gremax **SUNTEK** FIREMAX

SIZE	LOAD INDEX & SPEED	STD.RIM	SECTION WIDTH (MM)	OVERALL DIAMATER (MM)	MAX LOAD KGS	MAX. PRESSURER KPA
31x10.50R15LT	109 S6	8.5	275	769	1030	350
LT215/85R16	115/112 S10	6.0	216	772	1215	550
LT225/75R16	115/112 S10	6.0	223	744	1215	550
LT235/85R16	120/116 S10	6.5	235	806	1400	550
LT245/75R16	120/116 S10	7.0	250	777	1400	550
LT265/75R16	123/120 S10	7.5	270	807	1550	550
LT285/75R16	122/119 S8	8.0	286	834	1500	450
LT245/75R17	121/118 S10	7	248	800	1450	550
LT265/70R17	118/115 S8	8.0	272	804	1320	450
LT285/70R17	121/118 S10	8.5	292	832	1450	550
LT265/70R18	124/121 S10	8	272	829	1600	550



\*Advanced construction to enhance toughness  
\*Computer designed tread for excellent traction

# SUV/LT

## MAX AT2

Gremax

SIZE	LOAD INDEX & SPEED	STD.RIM	SECTION WIDTH (MM)	OVERALL DIAMATER (MM)	MAX LOAD KGS	MAX. PRESSURER KPA	LOAD Q'TY NO WRAP
235/75R15	109T XL	6½J	235	733	1030	300	820
265/70R16	112T STD	8J	272	778	1120	300	610
265/70R17	115T STD	8J	272	804	1215	300	490
275/55R20	117T XL	8½J	284	810	1285	340	580
31X10.50R15LT	109S C	8½J	268	775	1030	350	540
LT215/85R16	115/112S E	6J	216	772	1215/1120	550	725
LT225/75R16	115/112S E	6J	223	744	1215/1120	550	732
LT235/85R16	120/116S E	8½J	235	806	1380/1260	550	650
LT245/75R16	120/116S E	7J	248	774	1380/1260	550	660
LT265/75R16	123/120S E	7½J	267	804	1550/1400	550	560
LT285/75R16	122/119S D	8J	286	834	1500/1360	450	490



\* All terrain pattern design to enhance wet performance  
\* Tiered groove design makes a small moving angel of the tread block when connering to secure safe connering running performance, and kick the rocks off  
\* Center Rib to enhance the driving direction  
\* Aggressive shoulder design to improve off the road performance

## MAX AT

Gremax

SIZE	LOAD INDEX & SPEED	STD.RIM	SECTION WIDTH (MM)	OVERALL DIAMATER (MM)	MAX LOAD KGS	MAX. PRESSURER KPA	LOAD Q'TY NO WRAP
235/70R16	106T	7J	240	736	950	300	750
245/70R16	107T	7J	248	750	975	300	700
235/65R17	108T	7J	240	738	1000	340	780
245/65R17	107T	7J	248	750	975	300	720
265/65R17	112T	8J	272	776	1120	300	680
275/65R18	116T	8J	279	815	1250	300	580
265/60R18	110T	8J	272	775	1060	300	680
275/60R20	119T	8J	279	838	1215	300	520
31X10.50R15LT	109S C	8.5	268	775	1030	350	540
265/50R20	107T	8.5	277	774	1090	300	500
LT285/70R17	121/118	8.5	292	832	1450/1320	550	490
LT265/70R17	121/118 S	8	272	804	1450/1320	550	550
LT275/65R20	126S	8J	284	866	1700/1550	550	600



\* All terrain pattern design to enhance wet performance  
\* Tiered groove design makes a small moving angel of the tread block when connering to secure safe connering running performance and kick the rocks off  
\* Center Rib to enhance the driving direction  
\* Aggressive shoulder design to improve off the road performance

## MAX HT / STK SUV

Gremax **SUNTEK**

SIZE	LOAD INDEX & SPEED	STD.RIM	SECTION WIDTH (MM)	OVERALL DIAMATER (MM)	MAX LOAD KGS	MAX. PRESSURER KPA	LOAD Q'TY NO WRAP
205/70R15	96H	6J	209	669	710	300	1100
235/75R15	105H	6½J	235	733	925	300	850
215/65R16	102H XL	6½J	221	686	850	340	1050
235/60R16	100H	7J	240	688	800	300	800
225/70R16	103H	6½J	228	722	875	340	850
235/70R16	106H	7J	240	736	950	340	750
245/70R16	107H	7J	248	750	975	300	700
265/70R16	112H	8J	272	778	1120	300	600
235/65R17	108H XL	7J	240	738	1000	340	780
235/60R18	107V XL	7J	240	739	975	340	780
255/55R18	109V XL	8J	265	737	1030	340	780



\* T-V rated  
\* 4-wide straight Aqua channel to enhance wet performance  
\* Straight Center Rib to improve snow traction  
\* Shoulder Solid Rib to improve stability under high speed.

# SUV/ST

## MAX STR



SIZE	LOAD INDEX & SPEED	STD.RIM	SECTION WIDTH (MM)	OVERALL DIAMATER (MM)	MAX LOAD KGS	MAX. PRESSURER KPA	LOAD Q'TY NO WRAP
ST175/80R13 6C	91/87L	5.00B	177	610	1360	lbs@50psi	1630
ST205/75R14 6C	100/96L	5½J	203	664	1760	lbs@50psi	1200
ST215/75R14 6C	102/98L	6J	216	678	1870	lbs@50psi	1150
ST205/75R15 6C	101/97L	5½J	203	689	1820	lbs@50psi	1000
ST205/75R15 8D	107/102L	5½J	203	689	2150	lbs@50psi	1000
ST225/75R15 8D	113/108L	6J	223	719	2540	lbs@50psi	900
ST225/75R15 10E	117/112L	6J	223	719	2830	lbs@50psi	900
ST235/80R16 10E	123/119L	6½J	235	782	3420	lbs@50psi	760
ST235/85R16 12F							700



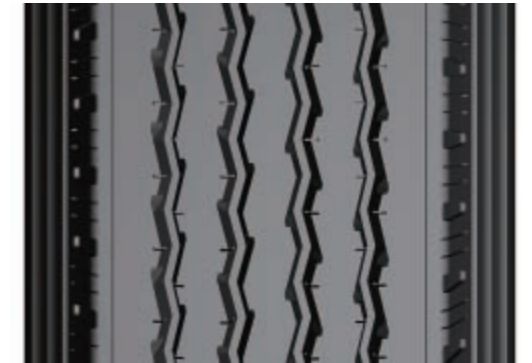
\* 5 ribs  
\* All position steel radial tyre for trailer service

# SUV/LT

## CAPTURAR CF11 / ECOWAY EF11 / FM101



SIZE	LOAD INDEX & SPEED	STD.RIM	SECTION WIDTH (MM)	OVERALL DIAMATER (MM)	MAX LOAD KGS	MAX. PRESSURER KPA
6.00R14LT	95/90N8	4.5	170	680	690	460
6.00R15LT	97/92N8	4.5	170	705	730	460
6.50R15LT	106/101N10	5.5	186	730	950	560
7.00R15LT	113/109N12	5.5	198	753	1150	670
6.50R16LT	107/102N10	5.5	187	745	975	560
7.00R16LT	115/110N12	5.5	198	779	1215	670



\* Economic light truck tire designed with optimized compound for excellent durability

## CAPTURAR CH3 / ECOWAY EH3



SIZE	LOAD INDEX & SPEED	STD.RIM	SECTION WIDTH (MM)	OVERALL DIAMATER (MM)	MAX LOAD KGS	MAX. PRESSURER KPA	LOAD Q'TY NO WRAP	UTQG
235/75R15	105H	6.5	235	733	925	300	850	440AA
215/70R16	100T	6.5	221	708	800	300	950	440AA
225/70R16	103H	6.5	228	722	875	300	778	440AA
235/65R17	108V XL	7	240	738	1000	340	780	440AA
235/70R16	106H	7	240	736	950	300	750	440AA
245/70R16	107H	7	248	750	975	300	700	440AA
225/65R17	102H	6.5	228	724	850	300	850	440AA
245/65R17	107T	7	248	750	975	300	750	440AA
265/65R17	112T	8	272	776	1120	300	680	440AA
265/70R17	115T	8	272	804	1215	300	550	440AA
235/60R18	107V XL	7	240	739	975	340	780	440AA
255/50R19	107V XL	8	265	739	975	340	650	440AA



\* Wide circumferential grooves for excellent on-road comfort and responsiveness  
\* Solid center rib for improved high speed stability

## CAPTURAR CF6 / ECOWAY EF6 / FM627



SIZE	LOAD INDEX & SPEED	STD.RIM	SECTION WIDTH (MM)	OVERALL DIAMATER (MM)	MAX LOAD KGS	MAX. PRESSURER KPA
225/60R17	99V	6.5	228	702	775	300
225/65R17	102V	6.5	228	724	850	300
235/55R17	103VXL	7.5	245	690	875	340
235/60R17	102V	7.0	240	714	850	300
235/65R17	104V	7.0	240	738	900	300
245/65R17	107V	7.0	248	750	975	300
255/60R17	106V	7.5	260	738	950	300
275/55R17	109V	8.5	284	734	1030	300
235/50R18	101VXL	7.5	245	693	825	340
235/55R18	100V	7.5	245	715	800	300
235/60R18	103V	7.0	240	739	875	300
235/65R18	106V	7.0	240	763	950	300
245/60R18	105V	7.0	248	751	925	300
255/55R18	109H/VXL	8.0	265	737	1030	340
255/65R18	111V	7.5	260	789	1090	300
265/60R18	114VXL	8.0	272	775	1180	340
235/55R19	105VXL	7.5	245	741	925	340
245/55R19	103V	7.5	253	753	875	300
255/50R19	107VXL	8.0	265	739	975	340
255/60R19	109V	7.5	260	789	1030	300
245/50R20	102H/V	7.5	253	754	850	300
255/55R20	107H	8.0	265	788	975	300



\* Optimized tread compound for longer wear and improved stability  
\* Variable tread pitch sequence for a smooth and quiet ride

# SUV/LT



## CAPTURAR CF10 / ECOWAY EF10 / FM519

Gremax SUNTEK FIREMAX

SIZE	LOAD INDEX & SPEED	STD.RIM	SECTION WIDTH (MM)	OVERALL DIAMETER (MM)	MAX LOAD KGS	MAX. PRESSURER KPA
245/75R16	111S	7.0	248	774	1090	300
265/75R16	116T	7.5	267	804	1250	300
235/60R17	102H	7.0	240	714	850	300
255/60R17	110TXL	7.5	260	738	1060	340
275/60R17	110S	8.0	279	762	1060	300
225/65R17	102H	6.5	228	724	850	300
235/65R17	104H	7.0	240	738	900	300
245/65R17	111HXL	7.0	248	750	1090	340
245/65R17	107T	7.0	248	750	975	300
255/65R17	110S	7.5	260	764	1060	300
265/65R17	112T	8.0	272	776	1120	300
265/65R17	112S	8.0	272	776	1120	300
235/70R17	111SXL	7.0	240	762	1090	340
245/70R17	110S	7.0	248	776	1060	300
255/70R17	112S	7.5	260	790	1120	300
265/70R17	115T	8.0	272	804	1215	300
235/75R17	109S	6.5	235	784	1030	300
265/60R18	114HXL	8.0	272	775	1180	340
275/65R18	116T	8.0	279	815	1250	300
275/55R20	117HXL	8.5	284	810	1285	340
275/60R20	115T	8.0	279	838	1215	300



- \* Variable tread element sequence for a smooth and quiet ride
- \* Computer designed tread with circumferential grooves for superior traction

# SUV/LT



## CAPTURAR CF9 / ECOWAY EF9 / FM516

Gremax SUNTEK FIREMAX

SIZE	LOAD INDEX & SPEED	STD.RIM	SECTION WIDTH (MM)	OVERALL DIAMETER (MM)	MAX LOAD KGS	MAX. PRESSURER KPA
235/75R15	109 SXL	6.5	235	733	1030	340
LT225/75R16	115/112 S10	6.0	223	744	1215	550
LT245/75R16	120/116 S10	7.0	248	774	1400	550
LT265/75R16	123/120 S10	7.5	267	804	1550	550
LT285/75R16	126/123 S10	8.0	286	834	1700	550
LT235/85R16	120/116 S10	6.5	235	806	1400	550
LT245/70R17	119/116 S10	7.0	248	776	1360	550
LT265/70R17	121/118 S10	8.0	272	804	1450	550
LT285/70R17	121/118 S10	8.5	292	832	1450	550
LT235/80R17	120/117 S10	6.5	235	804	1400	550
LT275/70R18	125/122 S10	8.0	279	843	1650	550



- \*High tension bead offers excellent support for tread
- \*Larger shoulder elements to promote long even wear

## CAPTURAR CF5 / ECOWAY EF5 / FM523

Gremax SUNTEK FIREMAX

SIZE	LOAD INDEX & SPEED	STD.RIM	SECTION WIDTH (MM)	OVERALL DIAMETER (MM)	MAX LOAD KGS	MAX. PRESSURER KPA
33x12.50R18LT	118Q10	10.0	318	826	1320	450
35x12.50R18LT	123Q10	10.0	318	877	1550	450
33x12.50R20LT	114Q10	10.0	318	826	1180	450
35x12.50R20LT	121Q10	10.0	318	877	1450	450
37x13.50R20LT	127Q10	10.0	345	928	1750	450
38x13.50R20LT	124Q8	10.0	345	953	1600	350
37x13.50R22LT	123Q10	10.0	345	928	1550	450
LT235/75R15	104/101 R6	6.5	243	736	900	350
LT235/75R15	116/113 Q10	6.5	243	736	1250	550
LT225/75R16	103/100 Q6	6.0	223	744	875	350
LT225/75R16	115/112 R10	6.0	223	744	1215	550
LT235/85R16	120/116 R10	6.5	235	806	1400	550
LT245/75R16	120/116 R10	7.0	250	777	1400	550
LT265/75R16	123/120 R10	7.5	270	807	1550	550
LT285/75R16	122/119 R8	8.0	286	834	1500	450
LT285/75R16	126/123 R10	8.0	286	834	1700	550
LT245/70R17	114/110 Q8	7.0	248	776	1180	450
LT245/70R17	119/116 R10	7.0	248	776	1360	550
LT265/70R17	118/115 R8	8.0	272	804	1320	450
LT265/70R17	121/118 R10	8.0	272	804	1450	550
LT285/70R17	121/118 R10	8.5	292	832	1450	550
LT315/70R17	121/118 R8	9.5	323	874	1450	350
LT275/65R18	123/120 R10	8.0	279	815	1550	550
LT285/65R18	125/122 R10	8.5	292	827	1650	550
LT325/60R18	124/121 R10	9.5	331	847	1600	450
LT285/55R20	122/119 R10	9.0	297	822	1500	550
LT305/55R20	121/118 R10	9.5	316	844	1450	450
LT325/50R20	120 R10	10.0	336	885	1400	450
LT325/60R20	126/123 R10	9.5	331	898	1700	450
275/60R20	115 T	8.0	279	838	1215	300



- \* Deep tread provides outstanding on or off-road traction
- \* Premium casing designed to offer extra load capacity

## MAX8000 / STK VAN

Gremax SUNTEK

SIZE	LOAD INDEX & SPEED	STD.RIM	SECTION WIDTH (MM)	OVERALL DIAMETER (MM)	MAX LOAD KGS	MAX. PRESSURER KPA	LOAD Q'TY NO WRAP
175/65R14C	90/88T	5J	177	584	1200/2240	375	1700
185R14C	102/100 Q	5½J	188	650	850/800	450	1300
195R14C	106/104 Q	5½J	198	666	950/900	450	1200
195R15C	106/104 R	5½J	198	666	950/900	450	1100
195/70R15C	104/102 R	6J	201	655	900/850	325	1100
205/65R15C	102/100R	6J	209	647	850/800	375	900
205/70R15C	106/104 R	6J	209	669	950/900	450	860
225/70R15C	112/110 R	6½J	228	697	1120/1060	475	850
185/75R16C	104/102 R	5J	184	684	900/850	475	1100
195/65R16C	104/102 R	6J	201	660	900/850	475	1150
195/75R16C	107/105R	5½J	196	698	975/925	475	1100
205/65R16C	107/105 R	6J	209	672	975/925	475	950
215/65R16C	109/107 R	6½J	221	686	1030/975	475	800
215/75R16C	113/111 R	6J	216	728	1150/1090	475	800
225/65R16C	112/110 R	6½J	228	698	1120/1060	475	800
235/65R16C	115/113 R	7J	240	712	1215/1150	475	750



- \* Q-T rated
- \* Zig-zig type main groove to enhance wet performance
- \* Aggressive kerfs contribute to good wear resistance and wet traction
- \* Heat emitting shoulder design at the belt edge to dissipate when high speed driving

# COMMERCIAL

## MAX TRANSP



SIZE	LOAD INDEX & SPEED	STD.RIM	SECTION WIDTH (MM)	OVERALL DIAMETER (MM)	MAX LOAD KGS	MAX. PRESSURER KPA	LOAD Q'TY NO WRAP
195R14C	106/104 Q	5½J	198	666	950/900	450	1200
205/75R14C	109/107 Q	5½J	203	664	1030/975	450	880
195R15C	106/104 Q	5½J	198	666	950/900	450	1100
205/75R15C	109/107 Q	5½J	205	689	1030/975	450	820



- \* 3-wide straight aqua channel to enhance wet performance
- \* Zigzag type main groove to enhance the tire traction
- \* Closed type rigid shoulder block to improve tire high road endurance and high-speed driving stability



# COMMERCIAL

## CAPTURAR CF12 / ECOWAY EF12 / FM913



SIZE	LOAD INDEX & SPEED	STD.RIM	SECTION WIDTH (MM)	OVERALL DIAMETER (MM)	MAX LOAD KGS	MAX. PRESSURER KPA
155R13C	90/88R8	4.5	157	578	600	450
165R13C	94/93R8	4.5	165	594	670	450
175R13C	97/95Q8	5.0	170	610	730	450
165R14C	96/95Q8	4.5	165	620	710	450
175R14C	99/97Q8	5.0	177	636	775	450
185R14C	102/100N8	5.5	189	652	850	450
195R14C	105/103Q8	5.5	196	668	925	450
205R14C	107/105Q8	6.0	208	684	975	450
185R15C	103/102Q8	5.5	189	677	875	450
195R15C	106/104Q8	5.5	196	693	950	450
165/70R13C	88/86Q6	5.0	170	562	560	450
175/70R14C	95/93S8	5.0	177	602	690	450
195/70R15C	104/102S8	6.0	201	655	900	450
205/70R15C	106/104R8	6.0	209	669	950	450
185/75R16C	104/102R8	5.0	184	684	900	450
215/75R16C	113/111R8	6.0	216	728	1150	450



- \* Advanced construction for optimized strength and durability
- \* Zig-zag pattern for excellent traction performance

## CAPTURAR CH6 / ECOWAY EH6



SIZE	LOAD INDEX & SPEED	STD.RIM	SECTION WIDTH (MM)	OVERALL DIAMETER (MM)	MAX LOAD KGS	MAX. PRESSURER KPA	LOAD Q'TY NO WRAP
175/65R14C	90/88T	5	177	584	600/560	375	1680
185/75R16C	104/102R	5	184	684	900/850	475	1220
185R14C	102/100Q	5.5	188	650	850/800	450	1300
195/65R16C	104/102R	6	201	660	900/850	475	1200
195/70R15C	104/102R	6	201	655	900/850	475	1150
195/75R16C	107/105R	5.5	196	698	975/925	475	1120
195R14C	106/104Q	5.5	198	666	950/900	450	1240
195R15C	106/104Q	5.5	196	693	950/900	450	1080
205/65R15C	102/100R	6	209	647	850/800	375	940
205/65R16C	107/105R	6	209	672	975/925	475	910
205/70R15C	106/104R	6	209	669	950/900	450	1050
215/65R16C	109/107R	6.5	221	686	1030/975	475	900
215/75R16C	113/111R	6	216	728	1150/1090	475	850
225/65R16C	112/110R	6.5	228	698	1120/1060	475	850
225/70R15C	112/110R	6.5	228	697	1120/1060	450	850
235/65R16C	115/113R	7	240	712	1215/1150	475	800
215/70R15C	109/107R	6.5	221	683	1030/975	450	/



- \* Alternatig shoulder slots for improved wear and all season performance
- \* Tread design for smooth durable highway performance

## LTR WSW



SIZE	LOAD INDEX & SPEED	STD.RIM	SECTION WIDTH (MM)	OVERALL DIAMETER (MM)	MAX LOAD KGS	MAX. PRESSURER KPA	LOAD Q'TY NO WRAP
155R13C	90/88R	4.5	157	578	600/560	450	90/88R
185R14C	102/100R	5.5	188	650	850/800	450	102/100R
195R14C	106/104R	5.5	198	666	950/900	450	106/104R
205/75R14C	106/104R	5.5	203	664	1030	475	106/104R
185R15C	103/102R	5.5	188	674	875	450	103/102R
195R15C	106/104R	5.5	196	693	950	450	106/104R
205/75R15C	106/104R	5.5	203	689	1030	475	106/104R



- \* Premium designed white sidewall commercial van tire
- \* Optimized compound longer tread durability and excellent traction



# WINTER



# WINTER

## CAPTURAR WCH7 / ECOWAY WEH7



SIZE	LOAD INDEX & SPEED	STD. RIM	SECTION WIDTH (MM)	OVERALL DIAMETER (MM)	MAX LOAD KGS	MAX. PRESSURER KPA
165/70R13	79T	5.0	170	562	437	300
185/60R14	82T	5.5	189	578	475	300
195/50R15	82H	6.0	201	577	475	300
195/55R15	85H	6.0	201	595	515	300
195/60R15	88H	6.0	201	615	560	300
195/65R15	91T	6.0	201	635	615	300
195/55R16	91H XL	6.0	201	620	615	340
205/55R16	91H	6.5	214	632	615	300
215/55R16	97H XL	7.0	226	642	650	340
225/55R16	99H XL	7.0	233	654	775	340
225/45R17	94H XL	7.5	225	634	670	340
235/45R17	97H XL	8.0	236	644	730	340



\* Asymmetric pattern design to reduce irregular wear  
 \* Multi-angle sipes effectively help to evacuate slush and water to maximize grip and control

## MAX ICE GRIPS



SIZE	LOAD INDEX & SPEED	STD. RIM	SECTION WIDTH (MM)	OVERALL DIAMETER (MM)	MAX LOAD KGS	MAX. PRESSURER KPA	LOAD Q'TY NO WRAP
175/70R13	82T	5.00B	177	576	475	300	1700
175/65R14	82T	5J	177	584	475	300	1700
185/65R14	86T	5½J	189	596	530	300	1450
195/65R15	91H	6J	201	635	615	300	1200
195/60R15	88T	6J	201	615	560	300	1150
205/70R15	96T	6J	209	669	710	300	1000
235/75R15	105T	6½J	235	733	925	300	850
205/55R16	91H	6J	209	647	670	300	1100
215/60R16	99H XL	6½J	221	664	775	340	1050
215/65R16	98H	6½J	221	686	750	300	1000
215/70R16	100T	6½J	221	708	800	300	600
225/60R16	98T	6½J	228	676	750	300	1000
225/70R16	103T	6½J	228	722	875	300	850
235/70R16	106T	7J	240	736	950	340	750
245/75R16	111T	7J	248	774	1090	300	680
265/70R16	112T	8J	272	778	1120	300	600
205/50R17	93V XL	6½J	214	638	650	340	1060
235/65R17	104T	6J	240	738	900	300	780
265/70R17	115T	8J	272	804	1215	300	500
195/70R15C 8PR	104/102R	6J	201	655	900	450	1100
225/70R15C 8PR	112/110R	6½J	228	697	1120	475	950
185/75R16C 8PR	104/102 R	5J	184	684	900/850	475	1100
205/65R16C 8PR	107/105 R	6J	209	672	975	475	910



\* 4-wide straight Aqua channel to enhance wet performance  
 \* Studdable pattern to improve safety performance on ice and snow road  
 \* Waved kurfs type to improve traction performance on snow road  
 \* Peak mountain design

## CAPTURAR WCH8 / ECOWAY WEH8



SIZE	LOAD INDEX & SPEED	STD. RIM	SECTION WIDTH (MM)	OVERALL DIAMETER (MM)	MAX LOAD KGS	MAX. PRESSURER KPA
175/70R13	82T	5.0	177	576	475	300
175/65R14	82T	5.0	177	584	475	300
175/70R14	88T XL	5.0	177	602	560	340
185/65R14	86T	5.5	189	596	530	300
185/70R14	92T XL	5.5	189	616	630	340
195/70R14	95T XL	6.0	201	630	690	340
185/60R15	88H XL	5.5	189	603	560	340
185/65R15	88H	5.5	189	621	560	300
195/60R15	88H	6.0	201	615	560	300
205/65R15	94H	6.0	209	647	670	300
215/70R15	98T	6.5	221	683	750	300
205/55R16	91H	6.5	214	632	615	300
205/60R16	96H XL	6.0	209	652	710	340
215/60R16	99H XL	6.5	221	664	775	340
215/65R16	98H	6.5	221	686	750	300
225/60R16	98H	6.5	228	676	750	300
235/70R16	98H	7.0	240	736	950	300
225/65R17	102T	6.5	228	724	850	300
235/65R17	108T XL	7.0	240	738	1000	340
245/65R17	111T XL	7.0	248	750	1090	340
265/70R17	115T	8.0	272	804	1215	300



\* V-channels design to evacuate snow, slush and water for maximum traction in severe condition  
 \* Multi-directional dense siping for excellent traction control and comfortable ride

## S100

### TRACMAX

SIZE	LOAD INDEX & SPEED	STD. RIM	SECTION WIDTH (MM)	OVERALL DIAMETER (MM)	MAX LOAD KGS	MAX. PRESSURER KPA	LOAD Q'TY NO WRAP
155/70R13	75T	4.50B	157	548	387	300	2100
155/80R13	79T	4.50B	157	578	437	300	2000
165/70R13	79T	5J	170	562	437	300	1850
175/70R13	82T	5J	177	576	475	300	1800
175/65R14	82T	5J	177	584	475	300	1700
175/70R14	84T	5J	177	602	500	300	1650
185/60R14	82H	5½J	189	578	475	300	1450
185/60R14	82T	5½J	189	578	475	300	1450
185/65R14	86H	5½J	189	596	530	300	1450
185/65R14	86T	5½J	189	596	530	300	1450
185/65R15	88T	5½J	189	621	560	300	1250
185/65R15	88H	5½J	189	621	560	300	1250
195/60R15	88H	6J	201	615	560	300	1200
195/60R15	88T	6J	201	615	560	300	1200
195/65R15	91H	6J	201	635	615	300	1150
195/65R15	91T	6J	209	635	615	300	1150
205/65R15	94H	6J	214	647	670	300	1000
205/55R16	91H	6½J	209	632	615	300	1130



\* Tracmax S100 is a snow tyre. It features in multi-kerfs, deeper grooves to maximize performance during the winter season

# WINTER

## S110

### TRACMAX

SIZE	LOAD INDEX & SPEED	STD.RIM	SECTION WIDTH (MM)	OVERALL DIAMETER (MM)	MAX LOAD KGS	MAX. PRESSURER KPA	LOAD Q'TY NO WRAP
205/60R16	92T	6J	209	652	630	300	1050
205/70R15	96S	6J	209	699	710	300	1100
215/70R15	98S	6½J	221	683	750	300	1000
P235/75R15	105S	6½J	235	733	920	300	880
215/60R16	95T	6½J	221	664	690	300	1050
215/65R16	98T	6½J	221	686	750	300	1050
225/60R16	98T	6½J	228	676	750	300	900
145/70R13	71T	4.50B	150	534	345	300	2200
155/65R13	73T	4.50B	157	532	365	300	2105
155/65R14	75T	5J	157	558	387	300	2000
165/60R14XL	79T	5J	170	554	437	300	1850
165/65R14	79T	4.50B	170	570	437	300	1800
165/70R14	81T	5J	170	588	462	300	1700
165/70R14XL	85T	5J	170	588	515	300	1700
165/65R15	81T	5J	170	595	462	300	1600
175/65R15	84T	5J	177	609	500	300	1500
185/55R15	82H	5½J	194	585	475	300	1400
185/60R15	84T	6J	189	603	500	300	1480
185/60R15XL	88T	6J	189	603	560	300	1480
195/50R15	82H	6J	201	577	475	300	1320
195/55R15	85H	6J	201	595	515	300	1300
195/55R16	87H	6J	201	620	545	300	1050



- \* Four main straight grooves improves the comfortableness and controlling stability.
- \* Corrugate pattern grooves channel the water to prevent hydroplaning.
- \* Densely located pattern block improves the traction, especially under snowy condition.

# WINTER

## S210

### TRACMAX

SIZE	LOAD INDEX & SPEED	STD.RIM	SECTION WIDTH (MM)	OVERALL DIAMETER (MM)	MAX LOAD KGS	MAX. PRESSURER KPA	LOAD Q'TY NO WRAP
215/55R16 XL	97H	7J	226	642	730	340	920
225/55R16 XL	99H	7J	233	654	690	300	900
225/45R17 XL	94V	71/2J	225	634	670	340	1020
175/60R15	81H	5J	177	591	462	300	1700
205/55R16XL	94H	61/2J	214	632	670	340	1180
195/45R16XL	84H	61/2J	195	582	500	340	1300
205/45R16XL	87H	7J	206	590	545	340	1230
235/60R16	100H	7J	240	688	800	300	850
205/40R17XL	84V	71/2J	212	596	500	340	1220
205/50R17XL	93V	61/2J	214	638	650	340	1070
215/50R17XL	95V	7J	226	648	690	340	950
215/55R17XL	98V	7J	226	668	750	340	880
215/60R17	96H	61/2J	221	690	710	300	940
225/50R17XL	98V	7J	233	658	750	340	870
225/55R17XL	101V	7J	233	680	825	340	860
225/60R17	99H	61/2J	228	702	775	300	940
235/45R17XL	97V	8J	236	644	730	340	930
235/60R17	102H	7J	240	714	850	300	800
225/40R18XL	92V	8J	230	637	630	340	920
225/45R18XL	95V	71/2J	225	659	690	340	920
245/40R18XL	97V	81/2J	248	653	730	340	820
245/45R18XL	100V	8J	243	677	800	340	800
235/35R19XL	91V	81/2J	241	647	615	340	850
195/65R15	91T	6J	201	635	615	300	1150
195/65R15	91H	6J	201	635	615	300	1150
205/55R16	91H	61/2J	214	632	615	300	1180



- \* Asymmetric non-single directional pattern, four main straight grooves improves the comfortableness and controlling stability.
- \* Round pattern blocks improves the rigidity of the tread with both irregular wear resistance and hydroplaning prevention.